

IBM System Storage N series



# OnCommand Unified Manager Installation and Setup Guide for Use with Core Package 5.2 and Host Package 1.3



# Contents

<b>Preface .....</b>	<b>10</b>
Supported features .....	10
Websites .....	10
Getting information, help, and service .....	10
Before you call .....	11
Using the documentation .....	11
Hardware service and support .....	11
Firmware updates .....	11
How to send your comments .....	12
<b>Overview of OnCommand Unified Manager manageability software components .....</b>	<b>13</b>
Core Package and Host Package installation and configuration checklists .....	13
OnCommand Unified Manager installation scenarios for different storage environments .....	14
OnCommand Unified Manager architecture .....	15
What a host service is (7-Mode environments only) .....	16
Contents of the OnCommand Unified Manager Core Package .....	17
Components installed with the OnCommand Unified Manager Core Package .....	17
Functionality available with the OnCommand Unified Manager Core Package .....	18
Contents of the OnCommand Unified Manager Host Package .....	19
Components installed with the OnCommand Unified Manager Host Package .....	19
Functionality available with the OnCommand Unified Manager Host Package in a VMware environment .....	20
Comparison of OnCommand Unified Manager Express edition and Standard editions (7-Mode environments only) .....	20
Functionality available in the Standard and Express editions .....	21
<b>System requirements .....</b>	<b>24</b>
Browser support, requirements, and limitations .....	24
Accessing the OnCommand console on a Linux-based PC .....	25

License requirements .....	26
License requirements for data protection .....	26
Network storage requirements for database files .....	27
OnCommand Unified Manager Core Package hardware and software requirements .....	27
Software required prior to installing OnCommand Unified Manager Core Package .....	27
Software required for Open Systems SnapVault .....	28
Software required for DataFabric Manager Host Agent (7-Mode environments only) .....	28
Hardware requirements for Windows Server 2008 with 1 to 25 storage systems .....	28
Requirements for Windows Server 2008 with 25 or more storage systems .....	29
Requirements for Linux workstation or server with 1 to 25 storage systems .....	30
Requirements for Linux workstation or server with 25 or more storage systems .....	31
Required ports for the Core Package .....	31
OnCommand Unified Manager Host Package hardware and software requirements .....	33
Hardware requirements .....	33
Operating system requirements .....	33
Software required prior to installing OnCommand Unified Manager Host Package .....	34
Designated ports for the OnCommand Unified Manager Host Package .....	35
<b>Installing the OnCommand Unified Manager Core Package .....</b>	<b>36</b>
Installation requirements specific to 7-Mode environments .....	36
Installation requirements specific to clustered environments .....	37
Downloading OnCommand Unified Manager Core Package .....	37
Installing OnCommand Unified Manager Core Package on Windows .....	38
Installing OnCommand Unified Manager Core Package on Linux .....	40
Installing the OnCommand Unified Manager Core Package with a script .....	42
Options you can use for the Windows installation script .....	43
Options you can use for the Linux installation script .....	44

Setting up Web security after restoring a database on a new OnCommand	
Unified Manager Core Package installation .....	45
Installing N series Management Console .....	46
Installing or upgrading OnCommand Unified Manager Windows PowerShell	
cmdlets .....	47
<b>Installing OnCommand Unified Manager Host Package .....</b>	<b>48</b>
Downloading the OnCommand Unified Manager Host Package .....	48
Prerequisites for installing the Host Package .....	48
Installing OnCommand Unified Manager Host Package .....	49
Shared lock directories with Virtual Storage Console .....	51
Setting up a shared lock directory .....	51
Installing the OnCommand Unified Manager Host Package using a script .....	52
Scripted install options for OnCommand Unified Manager Host Package	
.....	53
<b>Setting up your system .....</b>	<b>55</b>
Configuring the OnCommand Unified Manager Express edition server (7-Mode	
environments only) .....	55
Configuring the OnCommand Standard edition server with host services (7-	
Mode only) .....	59
Verifying that a host service is registered with the DataFabric Manager	
server (7-Mode environments only) .....	60
Authorizing a host service to access storage system credentials (7-Mode	
environments only) .....	61
Associating a host service with vCenter Server (7-Mode environments	
only) .....	62
Verifying communication between the host service and the	
OnCommand plug-in .....	65
Associating storage systems with a host service (7-Mode environments	
only) .....	66
Editing storage system login and NDMP credentials from the Host	
Services tab (7-Mode environments only) .....	68
Determining whether a storage system belongs to a workgroup or a domain .....	70
<b>Certificate-based authentication .....</b>	<b>71</b>
Certificate information .....	71
Managing certificates for cloud service clients .....	71
Generating a key and self-signed certificate .....	72

Adding a certificate in the truststore .....	72
Removing a certificate from the truststore .....	72
Displaying the list of certificates in a truststore .....	72
Displaying details about certificates in a truststore .....	73
Displaying the contents of the DataFabric Manager server key and certificate file .....	73
Displaying DataFabric Manager server certificate details .....	74
Disabling certificate-based authentication .....	74
Managing certificates for host services clients .....	75
Authorizing a host service certificate .....	75
Migrating certificates, keys, and truststores manually .....	75
<b>Enabling secure communication between the DataFabric Manager server and Data ONTAP .....</b>	<b>77</b>
<b>Upgrading to OnCommand Unified Manager Core and Host Packages .....</b>	<b>79</b>
Changes that affect upgrade to OnCommand Unified Manager Core Package .....	79
Upgrading OnCommand Unified Manager Core Package on Windows .....	81
Upgrading OnCommand Unified Manager Core Package on Linux .....	82
Upgrading from Core Package 32-bit to Core Package 64-bit .....	83
Upgrading Core Package to manage 7-Mode and clustered Data ONTAP environments .....	84
Prerequisites for upgrading the Host Package .....	85
Upgrading to OnCommand Unified Manager Host Package .....	86
Setting the port number manually .....	88
Upgrade issues with DataFabric Manager 3.8 or earlier .....	88
<b>Uninstalling the OnCommand Unified Manager Core and Host Packages .....</b>	<b>92</b>
Uninstalling the OnCommand Unified Manager Core Package from Windows .....	92
Uninstalling the OnCommand Unified Manager Core Package from Linux .....	93
Uninstalling the OnCommand Unified Manager Host Package .....	93
<b>Troubleshooting OnCommand Unified Manager installation and setup .....</b>	<b>95</b>
Address already in use .....	95
There is a problem with this Windows Installer package .....	95
Cursor displays in multiple locations in the same dashboard panel .....	95
Plug-in container for Firefox has stopped working .....	96

No related objects are displayed for a virtual object .....	96
Could not find any storage mapping for virtual object .....	97
Storage mapping fails for virtual machine and datastore created on VMFS datastore using FC LUN .....	97
Operation timed out .....	98
Primary key for table is not unique .....	98
Access is denied .....	98
Error 1067 while starting the DFM WebUI service .....	98
Verifying host service to DataFabric Manager server communication .....	99
Administrators usergroup does not exist on <vFiler name> .....	99
Host service fails to connect to DataFabric Manager server after a restart .....	99
Host service is unresponsive after successful installation of OnCommand Unified Manager Host Package .....	100
<b>Installing and configuring the Core Package in an MSCS environment .....</b>	<b>101</b>
Preparing to install the OnCommand Unified Manager Core Package in an MSCS environment .....	101
Prerequisites for installing the OnCommand Unified Manager Core Package in MSCS .....	101
Configuration requirements for the OnCommand Unified Manager Core Package in MSCS .....	102
Configuration limitations for the OnCommand Unified Manager Core Package in MSCS .....	103
Installing the OnCommand Unified Manager Core Package in an MSCS environment .....	103
Configuring MSCS for the OnCommand Unified Manager Core Package installation .....	103
Installing the OnCommand Unified Manager Core Package in MSCS .....	104
Example of the MSCS initial setup .....	106
DataFabric Manager server service resources added to MSCS .....	107
Configuring the OnCommand Unified Manager Core Package in an MSCS environment .....	107
Adding the cluster services using a script .....	108
Script options for configuring services in MSCS .....	109
Bringing DataFabric Manager server cluster services online in MSCS .....	109

Configuring DataFabric Manager server to use the cluster name in MSCS .....	109
Configuring DataFabric Manager server in MSCS manually .....	110
Configuring a host service in MSCS .....	115
Managing DataFabric Manager server in an MSCS environment .....	115
Best practices to start and stop DataFabric Manager server services in MSCS .....	115
Restoring the DataFabric Manager server database in MSCS .....	116
Configuring DataFabric Manager server to use HTTPS in MSCS .....	116
DataFabric Manager server monitoring in MSCS .....	119
Data shared by MSCS cluster nodes .....	119
Data that is not shared by MSCS cluster nodes .....	119
Uninstalling the OnCommand Unified Manager Core Package in an MSCS environment .....	120
Upgrading OnCommand Unified Manager Core Package in an MSCS environment .....	121
<b>Installing and configuring the Core Package in a VCS environment .</b>	<b>124</b>
Preparing to install OnCommand Unified Manager Core Package in a VCS environment .....	124
Prerequisites for installing OnCommand Unified Manager Core Package in VCS .....	124
Configuration requirements for OnCommand Unified Manager Core Package in VCS .....	125
Configuration limitations for the OnCommand Unified Manager Core Package in VCS .....	125
Installing OnCommand Unified Manager Core Package in a VCS environment ...	126
Configuring VCS to install the OnCommand Unified Manager Core Package .....	126
Installing OnCommand Unified Manager Core Package on VCS .....	127
Configuring OnCommand Unified Manager Core Package in a VCS environment .....	128
DataFabric Manager server service resources added to VCS .....	128
Script options for configuring services in VCS .....	129
Configuring DataFabric Manager server on the cluster nodes in VCS .....	130
Configuring DataFabric Manager server in VCS manually .....	131
Configuring a host services in VCS .....	133



Best practices to start and stop DataFabric Manager server services in VCS .....	133
Managing the DataFabric Manager server in a VCS environment .....	134
Restoring the DataFabric Manager server database in VCS .....	134
Changing default port numbers for HTTP and HTTPS protocols .....	134
Configuring the DataFabric Manager server to use HTTPS in VCS .....	136
Data shared by VCS cluster nodes .....	138
Data that is not shared by VCS cluster nodes .....	138
Uninstalling the OnCommand Unified Manager Core Package in a VCS environment .....	139
Upgrading OnCommand Unified Manager Core Package in a VCS environment .	139
<b>Copyright information .....</b>	<b>142</b>
<b>Trademark information .....</b>	<b>143</b>
<b>Index .....</b>	<b>146</b>

## Preface

---

### Supported features

IBM System Storage N series storage systems are driven by NetApp Data ONTAP software. Some features described in the product software documentation are neither offered nor supported by IBM. Please contact your local IBM representative or reseller for further details.

Information about supported features can also be found on the N series support website (accessed and navigated as described in [Websites](#) on page 10).

### Websites

IBM maintains pages on the World Wide Web where you can get the latest technical information and download device drivers and updates. The following web pages provide N series information:

- A listing of currently available N series products and features can be found at the following web page:  
[www.ibm.com/storage/nas/](http://www.ibm.com/storage/nas/)
- The IBM System Storage N series support website requires users to register in order to obtain access to N series support content on the web. To understand how the N series support web content is organized and navigated, and to access the N series support website, refer to the following publicly accessible web page:  
[www.ibm.com/storage/support/nseries/](http://www.ibm.com/storage/support/nseries/)  
This web page also provides links to AutoSupport information as well as other important N series product resources.
- IBM System Storage N series products attach to a variety of servers and operating systems. To determine the latest supported attachments, go to the IBM N series interoperability matrix at the following web page:  
[www.ibm.com/systems/storage/network/interophome.html](http://www.ibm.com/systems/storage/network/interophome.html)
- For the latest N series hardware product documentation, including planning, installation and setup, and hardware monitoring, service and diagnostics, see the IBM N series Information Center at the following web page:  
[publib.boulder.ibm.com/infocenter/nasinfo/nseries/index.jsp](http://publib.boulder.ibm.com/infocenter/nasinfo/nseries/index.jsp)

### Getting information, help, and service

If you need help, service, or technical assistance or just want more information about IBM products, you will find a wide variety of sources available from IBM to assist you. This section contains

information about where to go for additional information about IBM and IBM products, what to do if you experience a problem with your IBM N series product, and whom to call for service, if it is necessary.

## Before you call

Before you call, make sure you have taken these steps to try to solve the problem yourself:

- Check all cables to make sure they are connected.
- Check the power switches to make sure the system is turned on.
- Use the troubleshooting information in your system documentation and use the diagnostic tools that come with your system.
- Refer to the N series support website (accessed and navigated as described in [Websites](#) on page 10) for information on known problems and limitations.

## Using the documentation

The latest versions of N series software documentation, including Data ONTAP and other software products, are available on the N series support website (accessed and navigated as described in [Websites](#) on page 10).

Current N series hardware product documentation is shipped with your hardware product in printed documents or as PDF files on a documentation CD. For the latest N series hardware product documentation PDFs, go to the N series support website.

Hardware documentation, including planning, installation and setup, and hardware monitoring, service, and diagnostics, is also provided in an IBM N series Information Center at the following web page:

[publib.boulder.ibm.com/infocenter/nasinfo/nseries/index.jsp](http://publib.boulder.ibm.com/infocenter/nasinfo/nseries/index.jsp)

## Hardware service and support

You can receive hardware service through IBM Integrated Technology Services. Visit the following web page for support telephone numbers:

[www.ibm.com/planetwide/](http://www.ibm.com/planetwide/)

## Firmware updates

IBM N series product firmware is embedded in Data ONTAP. As with all devices, ensure that you run the latest level of firmware. Any firmware updates are posted to the N series support website (accessed and navigated as described in [Websites](#) on page 10).

**Note:** If you do not see new firmware updates on the N series support website, you are running the latest level of firmware.

Verify that the latest level of firmware is installed on your machine before contacting IBM for technical support.

## How to send your comments

Your feedback helps us to provide the most accurate and high-quality information. If you have comments or suggestions for improving this document, please send them by email to [starpubs@us.ibm.com](mailto:starpubs@us.ibm.com).

Be sure to include the following:

- Exact publication title
- Publication form number (for example, GC26-1234-02)
- Page, table, or illustration numbers
- A detailed description of any information that should be changed

# Overview of OnCommand Unified Manager manageability software components

---

The OnCommand Unified Manager suite is composed of two installation packages: OnCommand Unified Manager Core Package and OnCommand Unified Manager Host Package. Understanding the capabilities provided by each package helps you to install the packages based on your environment.

OnCommand Unified Manager Core Package provides backup and restore capabilities, monitoring, and provisioning for a physical storage environment. It also provides basic support for virtual storage environments. If you want to discover your virtual environment and want to take advantage of the full range of management and monitoring capabilities for virtual storage environments, you must install OnCommand Unified Manager Host Package as well.

OnCommand Unified Manager 5.1 and later supports Data ONTAP operating in 7-Mode environments or clustered environments. However, OnCommand Unified Manager 5.1 or later does not support management of both modes from the same OnCommand Unified Manager instance. During the OnCommand Unified Manager installation process, you are prompted to select either a 7-Mode environment or a clustered environment.

## Core Package and Host Package installation and configuration checklists

It is helpful to use checklists to verify that you have completed each task in the installation and configuration process, including reviewing system requirements; downloading and installing a variety of software; and, if your environment includes virtual objects, configuring the host service.

### Plan for, download, and install the software

This checklist provides an overview of the installation process for OnCommand Unified Manager Core Package and OnCommand Unified Manager Host Package. The OnCommand Unified Manager Host Package software is required only for a virtual environment. If you are installing in a purely physical environment and are not managing VMware virtual objects, you need not install the Host Package software or configure the host service.

1. [Review the system requirements](#): on page 24
  - Browser requirements
  - License requirements
  - Network storage requirements
  - Core Package hardware and software requirements
  - Host Package hardware and software requirements  
Required if installing in a virtual environment
2. [Download the OnCommand Core Package](#) on page 37.

3. [Download the OnCommand Host Package](#) on page 48.  
Required if installing in a virtual environment.
4. [Download the Host Agent software](#) on page 28.
5. [Download the Open Systems SnapVault software](#) on page 28.
6. Install the Core Package software: [Windows](#), on page 38 [Linux](#), on page 40 or [by script](#) on page 42.
7. Install the Host Package software: [VMware](#) on page 49 or [by script](#) on page 52.  
Required if installing in a virtual environment.
8. [Install the Host Agent software](#) on page 28.
9. [Install the Open Systems SnapVault software](#) on page 28.
10. Configure the host service: [Standard installation](#) on page 59 or [Express installation](#) on page 55.

### Configure the host service

If you selected the Express edition during the Core Package installation, you can use the Express Configuration wizard to configure your software. The wizard can be accessed from the Administration menu in the OnCommand console. After completing the wizard, you can use the following checklist to verify the results.

If you selected the Standard edition during the OnCommand Unified Manager Core Package installation, use this checklist to verify that you have completed all of the configuration tasks:

1. [Verify that the host service is registered with the DataFabric Manager server](#) on page 60.
2. [Authorize the host service to access storage system credentials](#) on page 61.
3. [Associate the host service with the vCenter Server](#) on page 62.
4. [Verify that the host service is communicating with the VMware plug-in](#) on page 65.
5. [Associate storage systems with the host service](#) on page 66.
6. [Verify that storage system credentials are valid](#) on page 68.
7. [Install N series Management Console](#) on page 46.
8. [Install the OnCommand Windows PowerShell cmdlets](#) on page 47.

When the configuration tasks are complete, you can create backup jobs from the Datasets tab.

## OnCommand Unified Manager installation scenarios for different storage environments

If your storage environment includes physical storage objects, you must install OnCommand Unified Manager Core Package. If you have a VMware environment and want to manage both physical and

virtual objects, then you must install both OnCommand Unified Manager Core Package and OnCommand Unified Manager Host Package.

**Related concepts**

*Installing the OnCommand Unified Manager Core Package* on page 36

*OnCommand Unified Manager Core Package hardware and software requirements* on page 27

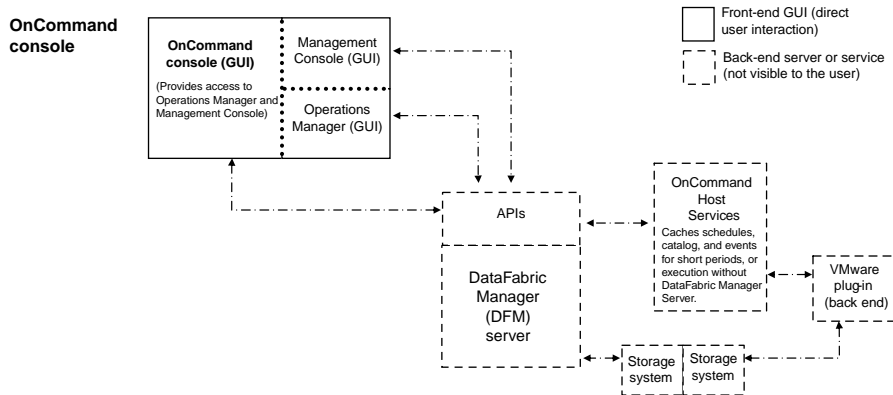
*Installing OnCommand Unified Manager Host Package* on page 48

*OnCommand Unified Manager Host Package hardware and software requirements* on page 33

## OnCommand Unified Manager architecture

OnCommand Unified Manager Core and Host Packages include interaction among front-end user interfaces (such as the OnCommand console, the N series Management Console, and the Operations Manager console) and back-end servers or services (such as the DataFabric Manager server, host services, VMware services plug-in, and storage systems).

You can launch the Operations Manager console and the N series Management Console to manage your physical environment.



**Related concepts**

*Contents of the OnCommand Unified Manager Core Package* on page 17

*Contents of the OnCommand Unified Manager Host Package* on page 19

*Comparison of OnCommand Unified Manager Express edition and Standard editions (7-Mode environments only)* on page 20

*What a host service is (7-Mode environments only)* on page 16

## What a host service is (7-Mode environments only)

A host service runs on physical or virtual machines and includes plug-ins that enable the DataFabric Manager server to discover, back up, and restore virtual objects, such as virtual machines and datastores. A host service also enables you to view virtual objects in the OnCommand Unified Manager.

When you make changes to your virtual infrastructure, automatic notification is sent from the host service to the DataFabric Manager server. You can manually start a rediscovery job to see your changes. You might need to refresh the host service information to see the updates in the OnCommand console.

The host service software is included as part of the installation of the OnCommand Unified Manager Host Package. You can install multiple host services on multiple vCenter Servers or virtual machines.

You must register at least one host service with the DataFabric Manager server before you can back up or restore data. Registration can be done during the installation process or after installation, from the Host Services tab accessible from the Administration menu in the OnCommand console. After registration, you can monitor and manage host services from the Host Services tab.

Host services notify the DataFabric Manager server about the progress of operations. If the DataFabric Manager server goes down, the host service caches messages and pushes the messages to the server as soon as the server is available. The DataFabric Manager server reviews the messages, and if any operations are incomplete or have failed, the server might restart these operations.

In addition, if the DataFabric Manager server is unavailable, you can still perform backup and restore operations from the host service by using the OnCommand Unified Manager Windows PowerShell cmdlets.

### Guidelines for managing host services

Following are some guidelines to consider when managing host services:

- Messages from host services are stored persistently in the DataFabric Manager server database `hsNotifications` table. This table continues to grow over time and can quickly become huge in a large environment. You can use the following global options to manage the size of this table:
  - `hsNotificationsMaxCount`
  - `hsNotificationsPurgingInterval`
- When you register a host service with the DataFabric Manager server, you can type the fully qualified domain name (FQDN) or IP address in the IPv4 format.
- If you change the certificate on a host service or uninstall a host service and then reinstall it, you must unregister the host service from DataFabric Manager server using the `-f` flag. See the `unregister` man page for more information.



- The OnCommand Unified Manager Host Package upgrade does not force host services to re-register with the DataFabric Manager server. Therefore, if you unregister a host service from the DataFabric Manager server prior to an OnCommand Unified Manager Host Package upgrade, you must manually register the host service to the DataFabric Manager server after the upgrade is finished.

#### Related tasks

[Installing OnCommand Unified Manager Host Package](#) on page 49

## Contents of the OnCommand Unified Manager Core Package

Understanding what components compose the OnCommand Unified Manager Core Package and what these components enable you to do helps you determine which components you want to enable during the installation and setup process.

#### Related concepts

[Comparison of OnCommand Unified Manager Express edition and Standard editions \(7-Mode environments only\)](#) on page 20

## Components installed with the OnCommand Unified Manager Core Package

Understanding the different components of the OnCommand Unified Manager Core Package helps you determine which components you want to enable during the installation and setup process.

The following components are installed on your system:

<b>DataFabric Manager server</b>	Enabled by default.
<b>DataFabric Manager server services</b>	Enabled by default.
<b>N series Management Console with protection, provisioning, and Performance Advisor capabilities</b>	Bundled with the Core Package but must be installed separately.
<b>OnCommand Windows PowerShell cmdlets</b>	Downloaded with the Core Package but must be installed separately. Perform local backup and restore operations of virtual objects, as well as mount and unmount operations, using the Windows PowerShell interface.

#### Related tasks

[Downloading OnCommand Unified Manager Core Package](#) on page 37

[Installing OnCommand Unified Manager Core Package on Windows](#) on page 38

[Installing OnCommand Unified Manager Core Package on Linux](#) on page 40

## Functionality available with the OnCommand Unified Manager Core Package

You can manage physical storage objects on primary and secondary storage after installing OnCommand Unified Manager Core Package software using OnCommand console, Operations Manager console, N series Management Console, and separate PowerShell Cmdlets for OnCommand Unified Manager, which all are installed with OnCommand Unified Manager Core Package.

The Core Package includes the OnCommand Unified Manager graphical user interface (GUI) console from which you can access storage management functionality that was previously accessible through separate IBM N series software products. OnCommand Unified Manager delivers access to this functionality through three GUI consoles and separate set of PowerShell Cmdlets for OnCommand Unified Manager:

### OnCommand console

The OnCommand console enables you to perform the following tasks:

- View a set of dashboard panels that provide high-level status of physical and virtual objects and support drill-down capabilities.
- Create and edit datasets for protecting virtual objects.
- Initiate backup and recovery of virtual objects, which is executed by the host service plug-ins.
- Launch other capabilities in the Core Package.
- Export, share, schedule, sort, filter, hide, and print data in the reports for physical objects.

### Operations Manager console

The Operations Manager console enables you to perform the following tasks:

- Manage users and roles.
- Monitor clusters, nodes, and vFiler units.
- Monitor physical objects for performance issues and failures.
- Manage storage systems, vFiler units, and virtual servers.
- Schedule and manage scripts.
- Track storage usage and available capacity.

### N series Management Console

The N series Management Console enables you to perform the following tasks:

- Provision physical resources.
- Back up and restore physical objects.
- Manage space on secondary storage.
- Provide disaster recovery for physical objects (automated failover and manual failback).

- Monitor performance.
- View dashboards for physical objects.
- Create and edit storage services.

### PowerShell Cmdlets for OnCommand

The PowerShell Cmdlets for OnCommand enable you to manage OnCommand Unified Manager protection-related capabilities through the command-line interface.

#### Related tasks

[Downloading OnCommand Unified Manager Core Package](#) on page 37

[Installing OnCommand Unified Manager Core Package on Windows](#) on page 38

[Installing OnCommand Unified Manager Core Package on Linux](#) on page 40

## Contents of the OnCommand Unified Manager Host Package

Understanding what components compose the OnCommand Unified Manager Host Package and what these components enable you to do helps you determine which components you want to enable during the installation and setup process.

#### Related concepts

[What a host service is \(7-Mode environments only\)](#) on page 16

## Components installed with the OnCommand Unified Manager Host Package

Understanding the different components of the OnCommand Unified Manager Host Package helps you prepare for installing the Host Package on your system.

The following components are installed on your system:

<b>OnCommand Unified Manager host service VMware plug-in</b>	A plug-in that receives and processes events in a VMware environment, including discovering, restoring, and backing up virtual objects such as virtual machines or datastores. This plug-in executes the events received from the host service.
<b>Host service</b>	Software that enables the DataFabric Manager server to forward requests, such as the request for a restore operation, to the appropriate plug-in and to send the final results of the specified job to that plug-in.
<b>Host service Windows PowerShell cmdlets</b>	Cmdlets that perform virtual object discovery, local restore operations, and host configuration when the DataFabric Manager server is unavailable.

### Related tasks

[Downloading the OnCommand Unified Manager Host Package](#) on page 48

[Installing OnCommand Unified Manager Host Package](#) on page 49

## Functionality available with the OnCommand Unified Manager Host Package in a VMware environment

You can discover and manage virtual objects after installing OnCommand Unified Manager Host Package software.

OnCommand Unified Manager Host Package enables you to perform the following tasks in a VMware environment:

- Create a dataset and then add virtual machines or datastores to the dataset for data protection
- Assign local protection and optionally remote protection policies to the dataset
- View storage details and space details about a virtual object
- Perform an on-demand backup of a dataset
- Mount existing backups onto an ESX server, to support tasks such as backup verification, single file restore, and restoration of a virtual machine to an alternate location
- Restore data from local and remote backups, as well as restoring data from backups made before the introduction of OnCommand Unified Manager management software

### Related tasks

[Downloading the OnCommand Unified Manager Host Package](#) on page 48

[Installing OnCommand Unified Manager Host Package](#) on page 49

## Comparison of OnCommand Unified Manager Express edition and Standard editions (7-Mode environments only)

During an initial OnCommand Unified Manager Core Package installation in 7-Mode environments, you can choose to install either the Express edition or the Standard edition of the DataFabric Manager server, depending on your deployment requirements.

The DataFabric Manager server is included as part of the OnCommand Unified Manager Core Package installation and provides infrastructure services such as discovery, monitoring, role-based access control (RBAC), auditing, and logging. If you are upgrading from a previous version of the DataFabric Manager server, the same edition you previously installed is automatically selected.

### Express edition

The OnCommand Unified Manager Express edition is intended for smaller environments of no more than four storage systems and no more than one vCenter Server.

Because of the reduced software footprint, the Express edition can be installed on a shared system. If you are also installing the OnCommand Unified Manager Host Package for your virtualized

environment, you can install the Core and Host packages on the same system. After installation is successfully completed, you can use the Express Configuration wizard to set up the services installed on your system. The wizard simplifies configuration by automating aspects of the configuration process.

The Express edition has the same level of data protection capability as the Standard edition, but with reduced monitoring capabilities for storage. Smaller environments generally do not require all of the functionality needed for large-scale environments. Eliminating unnecessary monitoring increases the performance levels in a small environment.

After installation of the Express edition, you must configure your environment before you can create backups. The simplest way to complete the configuration is to use the Express Configuration wizard, accessed from the Administration menu in the OnCommand console. The wizard configures your host service (required for virtual environments), discovers storage on your system, and groups that storage into a logical entity called a resource pool.

You can upgrade from the Express edition to the Standard edition if you later determine that you want to use the additional monitoring functionality provided by the Standard edition.

### Standard edition

The OnCommand Unified Manager Standard edition provides functionality in the DataFabric Manager server that is needed for larger deployments. This additional functionality requires that OnCommand Unified Manager and its DataFabric Manager server must be installed on a dedicated system.

The Standard edition does not offer a configuration wizard because its additional functionality requires more configuration considerations. You can do the post-installation configuration from the OnCommand console graphical user interface.

After the Standard edition is installed, you cannot downgrade to the OnCommand Unified Manager Express edition without losing the content of your existing database. The extended functionality and server database cannot be downsized to work with the Express edition.

### Related tasks

[Installing OnCommand Unified Manager Core Package on Windows](#) on page 38

[Installing OnCommand Unified Manager Core Package on Linux](#) on page 40

## Functionality available in the Standard and Express editions

Specific DataFabric Manager server functionality is automatically enabled or disabled in the Standard and Express editions of the OnCommand Unified Manager Core Package.

Functionality	Availability in Standard edition	Availability in Express edition
Chargeback reports	Y	Y
All DataFabric Manager services	Y	Y

<b>Functionality</b>	<b>Availability in Standard edition</b>	<b>Availability in Express edition</b>
Discovery of agents, and SAN in 7-Mode Discovery of clusters, agents, and SAN in clustered environments	Y	N
Discovery of storage systems	Y	Y
Events and alerts	Y	Y
Capability to manage the clustered environment	Y	N
Monitoring of agents, host RBAC, quotas, SAN hosts, and Vservers in 7-Mode Monitoring of clusters, agents, host RBAC, quotas, SAN hosts, and Vservers in clustered environments	Y	N
Monitoring of multiple storage system configurations	Y	N
Performance Advisor, in the N series Management Console	Y	N
Protection capability, in the N series Management Console	Y	Y
Provisioning capability, in the N series Management Console	Y	Y
Role-based access control (RBAC)	Y	Y
Schedule pre-configured for DataFabric Manager server database backups	N	Y
SOAP and ZAPI Interfaces	Y	Y
Automatic configuration of storage services and resource pools	N	Y
Web UI reporting	Y	Y

<b>Functionality</b>	<b>Availability in Standard edition</b>	<b>Availability in Express edition</b>
<p>Capability to edit monitoring intervals, in the Operations Manager console and the CLI</p>	<p>All the monitoring intervals can be edited</p>	<p>The following monitoring intervals are read-only; however, the default is set to a higher interval than those in the Standard edition:</p> <ul style="list-style-type: none"> <li>• Snapshot monitoring interval</li> <li>• File system monitoring interval</li> <li>• LUN monitoring interval</li> <li>• SnapMirror monitoring interval</li> <li>• SnapVault monitoring interval</li> <li>• Discovery interval</li> <li>• shareMonInterval (CLI-only)</li> <li>• dpReaperInterval (CLI-only)</li> </ul>

## System requirements

---

Before you install the software, you must ensure that your storage system conforms to all supported platform requirements. Servers running OnCommand Unified Manager Core Package or OnCommand Unified Manager Host Package must meet specific software, hardware, and operating system requirements.

### Browser support, requirements, and limitations

To ensure that you can install and launch the software successfully, you must follow the requirements and limitations for the Microsoft Internet Explorer and Mozilla Firefox browsers supported by the OnCommand Unified Manager management software.

#### Supported browsers

The OnCommand Unified Manager management software supports the following browsers, based on the operating system and the GUI console used:

Operating system	OnCommand package installed	OnCommand GUI console used	Supported browser
Windows	Core Package only	OnCommand console only	<ul style="list-style-type: none"> <li>• Microsoft Internet Explorer 8, 9, 10</li> <li>• Mozilla Firefox 17.0, 18.0, and 19.0</li> <li>• Google Chrome 22.0, 23.0, 24.0</li> </ul>
Windows	Core Package and Host Package	OnCommand console and OnCommand Plug-in for VMware	<ul style="list-style-type: none"> <li>• Windows Internet Explorer 8, 9, 10</li> <li>• Mozilla Firefox 17.0, 18.0, and 19.0</li> <li>• Google Chrome 22.0, 23.0, 24.0</li> </ul>
Linux	Core Package only	OnCommand console only	Mozilla Firefox 17.0, 18.0, and 19.0

See the N series interoperability matrix website (accessed and navigated as described in [Websites](#) on page 10) Tool for possible updates to this information.



## Browser requirements and limitations

<b>Mozilla Firefox</b>	Not all versions of Firefox are supported. You should disable the automatic upgrade feature in Firefox to avoid installing an unsupported version.
<b>Microsoft Internet Explorer, version 8</b>	<ul style="list-style-type: none"> <li>• Mozilla Firefox versions 17.0, 18.0, and 19.0</li> <li>• To avoid browser display issues, you must disable the Compatibility View feature before launching the OnCommand console. For details, see the Microsoft support site.</li> <li>• To ensure that OnCommand console can launch, you must ensure that active scripting and that binary and script behaviors are enabled.</li> <li>• If enhanced security is enabled in Internet Explorer 8, you might have to add <code>http://DataFabric Manager server IP address:8080</code> to the browser's list of trusted sites so that you can access the server. You might also have to add port 8443 to the list of trusted sites if you are using SSL. You can add ports and URLs in the Security tab under <b>Tools &gt; Internet Options</b>.</li> </ul>
<b>Microsoft Internet Explorer, version 9</b>	If enhanced security is enabled, you must disable it. If enhanced security is enabled in Internet Explorer 9, the OnCommand console might not load.

### Related references

*Required ports for the Core Package* on page 31

### Related information

*Microsoft Support*

*IBM N series interoperability matrix: [www.ibm.com/systems/storage/network/interophome.html](http://www.ibm.com/systems/storage/network/interophome.html)*

## Accessing the OnCommand console on a Linux-based PC

If you install and run DataFabric Manager server on a Linux workstation or server, you must launch the OnCommand console GUI using the Internet Explorer 8 or Firefox browser on a separate Windows system to manage the DataFabric Manager server, which is running on a Linux-based computer.

### Steps

1. Install the OnCommand Unified Manager Core Package on a Linux workstation or server.
2. Install the N series Management Console on a Windows machine.

3. Install the Firefox or Internet Explorer browser on the same Windows machine as the N series Management Console.
4. Configure the N series Management Console and the browser to point to the Linux workstation or server where the DataFabric Manager server is installed.
5. Launch the OnCommand console GUI using the Internet Explorer or Firefox browser that is running on the Windows machine where it can communicate with the DataFabric Manager server that is running on the Linux workstation or server.

## License requirements

Each of the OnCommand Unified Manager components has specific licensing requirements.

<b>Core Package</b>	OnCommand Unified Manager Core Package does not require a license.
<b>Host Package</b>	OnCommand Unified Manager Host Package requires one license per storage system, but it does not generate any license key.
<b>DataFabric Manager server</b>	The DataFabric Manager server requires one core license key, which is free and is used only to establish a unique serial number for the server.
<b>Data ONTAP requirements</b>	<p>Certain OnCommand Unified Manager functionality requires other types of licenses for Data ONTAP.</p> <p>OnCommand Unified Manager Core Package 5.2 does not support the Business Continuance Option (BCO) license because IBM has announced its end of support. If you are using the BCO license to monitor and manage your data protection environment, use the data protection capability of the N series Management Console in Core Package 5.2. Otherwise, use Core Package 5.1 or earlier.</p>

See the N series interoperability matrix website (accessed and navigated as described in [Websites on page 10](#)) Tool for details.

### Related information

*IBM N series support website: [www.ibm.com/storage/support/nseries](http://www.ibm.com/storage/support/nseries)*

## License requirements for data protection

If you want to use the Business Continuance Option (BCO) license for data protection, you should use Core Package 5.1 or earlier. If you want to upgrade to Core Package 5.2, you must use the N series Management Console to monitor and manage your data protection environment.

In OnCommand Unified Manager Core Package 5.2, you cannot use the BCO license to monitor and manage your data protection environment. OnCommand Unified Manager Core Package 5.2 does not support the BCO license because IBM has announced end of support for this feature.

**Important:** Before upgrading to OnCommand Unified Manager Core Package 5.2, all BCO functionality must be transferred to protection capability or removed.

## Network storage requirements for database files

To enable optimal database access and performance results, DataFabric Manager server requires that the DataFabric Manager server database files be installed on a server using either SAN or iSCSI to connect to the network.

Sybase and DataFabric Manager server do not support accessing the DataFabric Manager server Sybase database files on NAS.

You should not delete the SQL files that are installed in the `/tmp` directory. If the SQL files are deleted from the `/tmp` directory, the DataFabric Manager server cannot start.

### Related information

*[Running a SQL Anywhere](#)*

## OnCommand Unified Manager Core Package hardware and software requirements

Before installing the OnCommand Unified Manager Core Package, ensure that your system meets the hardware and software requirements.

### Software required prior to installing OnCommand Unified Manager Core Package

Before installing OnCommand Unified Manager Core Package, you must install Adobe Flash Player 8.0 or later on the machine from which you launch the OnCommand console.

You can download the software from the Adobe downloads site.

Before you download Flash Player, you should ensure that file downloads are enabled in your web browser and, if you are using Microsoft Internet Explorer, verify that the security settings for ActiveX controls are enabled.

You must install Adobe Flash Player from each browser type that you intend to use with the OnCommand console, even if the browsers are on the same system. For example, if you have both Mozilla Firefox and Microsoft Internet Explorer on the same system and you think you might use both browsers to access the OnCommand console, you must install Adobe Flash Player using the Firefox browser, and then install Adobe Flash Player using the Internet Explorer browser.

**Related information**

*[Adobe Downloads](#)*

## **Software required for Open Systems SnapVault**

You must separately download and install Open Systems SnapVault software if you intend to back up and restore data residing on non-IBM N series physical storage systems; otherwise, you cannot back up and restore data on those storage environments.

OnCommand Unified Manager Core Package supports the use of Open Systems SnapVault to back up and restore virtual machines in a non-IBM N series storage environment, but it is not required. OnCommand Unified Manager Core Package supports Open Systems SnapVault 2.6.1, 3.0, and 3.0.1.

**Related information**

*[IBM N series support website: www.ibm.com/storage/support/nseries](http://www.ibm.com/storage/support/nseries)*

## **Software required for DataFabric Manager Host Agent (7-Mode environments only)**

You must separately download and install DataFabric Manager Host Agent software if you want OnCommand Unified Manager to monitor SAN hosts.

The Host Agent software collects information such as operating system name and version, HBA port details, and file-system metadata, and then sends that information to the DataFabric Manager server. The DataFabric Manager Host Agent software must be installed on any Windows or Linux hosts from which you want to monitor SAN host IBM N series OnCommand management software.

DataFabric Manager Host Agent is also required if you want to remotely start, stop, or restart Open Systems SnapVault software by using N series Management Console. In this case, the Host Agent must be installed on the same machine as Open Systems SnapVault.

The minimum version supported by OnCommand Unified Manager Core Package is DataFabric Manager Host Agent version 2.7.

**Related information**

*[IBM N series support website: www.ibm.com/storage/support/nseries](http://www.ibm.com/storage/support/nseries)*

## **Hardware requirements for Windows Server 2008 with 1 to 25 storage systems**

You must meet certain software and hardware requirements when you use systems running Windows 64-bit OS on x64 hardware.

### **Operating system requirements**

The software requirements are as follows:

- Microsoft Windows Server 2008, Enterprise or Standard edition
- Microsoft Windows 2008 R2, Enterprise or Standard edition
- Microsoft Windows Server 2008 or 2008 R2 running on VMware ESX 3.5, 4.0, or 5.0

### Hardware requirements

The hardware requirements are as follows:

Hardware	Requirements
Processor	<ul style="list-style-type: none"> <li>• Intel or AMD x64 processor</li> <li>• 2 GHz or faster CPU</li> </ul>
Memory	<ul style="list-style-type: none"> <li>• 4 GB RAM (minimum)</li> </ul>
Disk space	<ul style="list-style-type: none"> <li>• 10 GB (minimum)</li> <li>• 40 GB (recommended)</li> </ul>
Temporary disk space for installation	<ul style="list-style-type: none"> <li>• 4 GB</li> </ul>

### Requirements for Windows Server 2008 with 25 or more storage systems

You must follow certain hardware and software requirements when you use systems running Windows 64-bit OS on x64 hardware.

#### Operating system requirements

The software requirements are as follows:

- Microsoft Windows Server 2008, Enterprise or Standard edition
- Microsoft Windows 2008 R2, Enterprise or Standard edition
- Microsoft Windows Server 2008 or 2008 R2 running on VMware ESX 3.5, 4.0, or 5.0

### Hardware requirements

The hardware requirements are as follows:

Hardware	Requirements
Processor	<ul style="list-style-type: none"> <li>• Intel or AMD x64 processor</li> <li>• 2 GHz or faster CPU</li> </ul>
Memory	<ul style="list-style-type: none"> <li>• 6 GB RAM (minimum)</li> <li>• 12 GB RAM (recommended)</li> </ul>

Hardware	Requirements
Disk space	<ul style="list-style-type: none"> <li>• 12 GB (minimum)</li> <li>• 60 GB (recommended)</li> </ul>
Temporary disk space for installation	<ul style="list-style-type: none"> <li>• 4 GB</li> </ul>

## Requirements for Linux workstation or server with 1 to 25 storage systems

To ensure that your installation succeeds, you must follow certain software and hardware requirements when you use systems running Linux workstation or server.

### Operating system requirements

The software requirements for 64-bit Linux workstation or server are as follows:

- Oracle Enterprise Linux 5.6, 6.0, or 6.1
- Red Hat Enterprise Linux Server 5.6, 5.7, 5.8, 6, 6.1, or 6.2
- SUSE Linux Enterprise Server 10 SP3, 10 SP4, 11, 11 SP1, or 11 SP2

The software requirements for 64-bit Linux server on VMware ESX 4.0, ESX 4.1, ESXi 4.0, ESXi 4.1, or ESXi 5.0 are as follows:

- Red Hat Enterprise Linux Server 5.6, 5.7, 5.8, 6, 6.1, or 6.2
- SUSE Linux Enterprise Server 10 SP3, 10 SP4, 11, 11 SP1, or 11 SP2

### Hardware requirements

The hardware requirements for 64-bit Linux workstation or server and 64-bit Linux server on VMware ESX or ESXi are as follows:

Hardware	Requirements
Processor	<ul style="list-style-type: none"> <li>• Intel or AMD x64 processor</li> <li>• 2 GHz or faster CPU</li> </ul>
Memory	<ul style="list-style-type: none"> <li>• 4 GB RAM (minimum)</li> </ul>
Disk space	<ul style="list-style-type: none"> <li>• 4 GB of free disk space (minimum)</li> <li>• 8 GB (recommended)</li> </ul>
Temporary disk space for installation	<ul style="list-style-type: none"> <li>• 4 GB</li> </ul>

## Requirements for Linux workstation or server with 25 or more storage systems

To ensure that your installation succeeds, you must meet certain software and hardware requirements when you use systems running Linux workstation or server.

### Operating system requirements

The software requirements for 64-bit Linux workstation or server are as follows:

- Oracle Enterprise Linux 5.6, 6.0, or 6.1
- Red Hat Enterprise Linux Server 5.6, 5.7, 5.8, 6, 6.1, or 6.2
- SUSE Linux Enterprise Server 10 SP3, 10 SP4, 11, 11 SP1, or 11 SP2

The software requirements for 64-bit Linux server on VMware ESX 4.0, ESX 4.1, ESXi 4.0, ESXi 4.1, or ESXi 5.0 are as follows:

- Red Hat Enterprise Linux Server 5.6, 5.7, 5.8, 6, 6.1, or 6.2
- SUSE Linux Enterprise Server 10 SP3, 10 SP4, 11, 11 SP1, or 11 SP2

### Hardware requirements

The hardware requirements for Linux workstation or server are as follows:

Hardware	Requirements
Processor	<ul style="list-style-type: none"> <li>• Intel or AMD x64 processor</li> <li>• 2 GHz or faster CPU</li> </ul>
Memory	<ul style="list-style-type: none"> <li>• 6 GB RAM (minimum)</li> <li>• 12 GB RAM (recommended)</li> </ul>
Disk space	<ul style="list-style-type: none"> <li>• 4 GB of free disk space (minimum)</li> <li>• 8 GB (recommended)</li> </ul>
Temporary disk space for installation	<ul style="list-style-type: none"> <li>• 4 GB</li> </ul>

## Required ports for the Core Package

You might have to configure your firewall on OnCommand Unified Manager Core Package to open default ports that enable communication between DataFabric Manager server and various components, such as managed storage systems and agents. If a port is not open, communication fails between DataFabric Manager server and the storage system or other component.

The following default ports must be open on your firewall:

Default port number	Description
22	<p>The port used for initiating, on storage systems, a secure cluster console, secure storage system takeover and giveback, and secure remote command execution</p> <p>The port is also used for vFiler unit monitoring and management.</p>
23	The port used to initiate a Telnet session to managed storage systems
25	The SMTP port used by DataFabric Manager server to send email for alarms and AutoSupport notification when the <code>autosupportProtocol</code> option is set to SMTP
80	The port used for storage system management
161	The port used to communicate with storage systems
162	<p>The port used by managed storage systems to send SNMP traps to DataFabric Manager server to speed up monitoring of important events</p> <p>This port is configurable.</p>
443	The port used for SecureAdmin-based storage system management
514	The port used for initiating, on storage systems, a cluster console, storage system takeover and giveback, and remote command execution, as well as for vFiler unit monitoring and management
4092	The port used to connect to the DataFabric Manager Host Agent
4093	The port used for a secure connection to the DataFabric Manager Host Agent
8080	The port used for Operations Manager console access
8088	The port used for N series Management Console access
8443	The port used for secure Operations Manager console access
8488	The port used for secure N series Management Console access
10000	The port used by Protection Manager to monitor and manage storage system SnapVault and SnapMirror relationships, and SnapVault relationships from Open Systems SnapVault agents



**Related references**

*Designated ports for the OnCommand Unified Manager Host Package* on page 35

## OnCommand Unified Manager Host Package hardware and software requirements

Before installing OnCommand Unified Manager Host Package, you must ensure that your system meets the hardware and software requirements.

### Hardware requirements

Your Windows system must meet minimum hardware requirements before you can install OnCommand Unified Manager Host Package. These requirements apply to all virtual environments. The actual requirements depend on your system configuration.

Hardware	Requirements
Processor	<ul style="list-style-type: none"> <li>Intel or AMD x64 processor with 2 GHz or faster</li> <li>Intel or AMD x86 processor with 2 GHz or faster</li> </ul>
Memory	<ul style="list-style-type: none"> <li>4 GB RAM (minimum)</li> </ul>
Disk space	<ul style="list-style-type: none"> <li>40 GB (minimum)</li> </ul>
Temporary disk space for installation	<ul style="list-style-type: none"> <li>4 GB Required for the Windows drive</li> </ul>

### Operating system requirements

You must ensure that the OnCommand Unified Manager Host Package supports your operating system.

#### Operating systems

The Host Package supports Microsoft Windows Server 2008 or 2008 R2 running on VMware ESX 3.5 or later.

See the interoperability matrix Tool for details.

#### Related information

*IBM N series* <http://www.ibm.com/systems/storage/network/interophome.html>

## Software required prior to installing OnCommand Unified Manager Host Package

Before installing OnCommand Unified Manager Host Package for the first time, you must have certain Microsoft .NET Framework, Microsoft Net.TCP Port Sharing Service, Microsoft Windows PowerShell, Windows Installer, Microsoft Visual C++, and Microsoft hotfixes already installed on each system on which Host Package is to be installed.

### Microsoft .NET Framework

OnCommand Unified Manager supports Microsoft .NET 3.5 SP1 but not 4.0. If you have installed 4.0, you do not have to downgrade; you can just install 3.5 SP1. If both .NET versions are installed on the system, OnCommand Unified Manager uses 3.5 by default.

### Microsoft Net.TCP Port Sharing Service

This service is not enabled by default; it must be manually enabled prior to installing Host Package. See the [Microsoft MSDN library](#) for more information.

### Microsoft Windows PowerShell

You can search using the text string “powershell” on the Microsoft Support site and select the appropriate version for your system. The minimum required version is PowerShell 1.0, but PowerShell 2.0 is required to use the DataFabric Manager server PowerShell cmdlets.

**Note:** On Windows Server 2008, PowerShell 1.0 is installed by default, but you must enable it on the server. You must download and install PowerShell 2.0.

### Microsoft Visual C++ 2008 SP Redistributable Package on Windows Server 2008 Server Core installations

The following software packages are required only for the server core or minimal installation option for Windows Server 2008. You can view information about and download the software from the Microsoft Download Center.

- You must install the Microsoft Visual C++ 2008 SP Redistributable Package (x86) and the Microsoft Visual C++ 2008 SP Redistributable Package (x64).

### Microsoft hotfix

The hotfix KB 981929 is required and can be downloaded from the Microsoft Support site.

### Related information

[Microsoft Support site](#)

[Microsoft Download Center](#)

## Designated ports for the OnCommand Unified Manager Host Package

The OnCommand Unified Manager Host Package uses designated ports to enable communication between components. If the Windows Firewall is enabled, you must ensure that the firewall is set to allow exceptions for the designated ports.

For firewalls other than Windows, you must manually grant access to the designated ports that are to be used for the Host Package installation. The installer attempts to create the necessary exceptions to designated ports in your Windows firewall; if you have other types of firewalls in place, verify that these ports are available.

**Note:** The installer automatically creates firewall exceptions for the first seven ports listed in the table.

All of the ports except those so noted in the following table can be used to install the OnCommand Unified Manager Host Package with a script.

Designated port number	Description
8699	The port used by the OnCommand Unified Manager host service administrator
808	The OnCommand Unified Manager TCP/IP endpoint
8799	The port used by the OnCommand Unified Manager host service agent
8897	The port used by the OnCommand Unified Manager file service
8044	The port used by the OnCommand Unified Manager host service VMware plug-in
8043	The port used by SnapManager for Virtual Infrastructure
8480	The port used by the DataFabric Manager server
8488	The DataFabric Manager server HTTPS port, which is used for HTTP connections
443	The port used by the vCenter Server  <b>Note:</b> This port is used only for installing the OnCommand Unified Manager Host Package with a script.

### Related references

[Required ports for the Core Package](#) on page 31

# Installing the OnCommand Unified Manager Core Package

---

The OnCommand Unified Manager Core Package provides management capabilities for your physical storage environment and, when the OnCommand Unified Manager Host Package is also installed, the OnCommand console can display the physical-to-virtual mapping as well as provide policy-based local and remote backup and recovery for virtual objects.

## Installation requirements specific to 7-Mode environments

Some OnCommand Unified Manager installation and setup features are specific to 7-Mode environments and are noted as 7-Mode only in the documentation. All other installation information, requirements, and instructions apply to both 7-Mode and clustered environments.

When you begin installing OnCommand Unified Manager in a 7-Mode environment, you must select 7-Mode when prompted.

When you install OnCommand Unified Manager in a 7-Mode environment, you can choose either the Express edition or the Standard edition of the software. If you are upgrading OnCommand Unified Manager from a version earlier than 5.0, Express edition is not supported.

If you change your environment from clustered to 7-Mode, you must delete the clustered objects from the DataFabric Manager server.

### Related concepts

[\*What a host service is \(7-Mode environments only\)\*](#) on page 16

[\*Comparison of OnCommand Unified Manager Express edition and Standard editions \(7-Mode environments only\)\*](#) on page 20

[\*Software required for DataFabric Manager Host Agent \(7-Mode environments only\)\*](#) on page 28

### Related tasks

[\*Configuring the OnCommand Standard edition server with host services \(7-Mode only\)\*](#) on page 59

[\*Configuring the OnCommand Unified Manager Express edition server \(7-Mode environments only\)\*](#) on page 55

## Installation requirements specific to clustered environments

OnCommand Unified Manager supports both clustered and 7-Mode environments, however; there are some minor distinctions in the installation process in the clustered environment of which you should be aware.

When you begin installing OnCommand Unified Manager in a clustered environment, you must select clustered environment when prompted.

If you are installing or upgrading OnCommand Unified Manager in a clustered environment, you can install only the Standard edition of the software.

When you upgrade your 7-Mode environment to a clustered environment, you must delete the 7-Mode objects from the DataFabric Manager server.

Upgrading from the Express edition of OnCommand Unified Manager to a clustered environment is not allowed. If you currently have the Express edition of OnCommand Unified Manager installed, you must first upgrade to the Standard edition of OnCommand Unified Manager 5.0.

Host services and DataFabric Manager Host Agent are not supported in a clustered environment. If you are managing host services when upgrading to a clustered environment, you are notified that the host services will be removed. Information related to host services and DataFabric Manager Host Agent features are noted as 7-Mode only in the documentation. All other installation information, requirements, and instructions apply to both 7-Mode and clustered environments.

## Downloading OnCommand Unified Manager Core Package

Before installing OnCommand Unified Manager Core Package, you must download the executable file, from the N series support website (accessed and navigated as described in [Websites](#) on page 10).

### Related tasks

[Downloading the OnCommand Unified Manager Host Package](#) on page 48

### Related information

[IBM N series support website: www.ibm.com/storage/support/nseries](http://www.ibm.com/storage/support/nseries)

## Installing OnCommand Unified Manager Core Package on Windows

After you have met the guidelines, requirements, and restrictions for installing OnCommand Unified Manager Core Package, you can follow the prompts in the installation wizard to install the software.

### Before you begin

- You must have administrator privileges for the Windows computer on which you are installing the Core Package.
- You must have downloaded the setup file.
- You must have the following items:
  - The DataFabric Manager server license key
  - Credentials for network access
  - The IP address of the server on which you are installing the software
  - The path of the directory on which you want to install, if different from the default location
- In addition, your antivirus software must include the following changes:
  - Either the antivirus software is disabled or an exclusion is added for the DataFabric Manager server.  
If this condition is not met, the installation fails.
  - The Sybase ASA files are excluded to avoid both DataFabric Manager server performance issues and the possibility of database corruption.

### About this task

If you have to manage both 7-Mode and clustered Data ONTAP server environments, you must install two separate Core Packages on two Windows servers.

For optimal performance, the only other application that must be installed on the system running Core Package software is OnCommand Unified Manager Host Package.

During the Core Package installation, if you select the Standard edition in the installation wizard, you configure the host service manually. If you select the Express edition, you can use the Express Configuration wizard to configure a host service.

**Note:** The Express edition is available only when you choose 7-Mode as your environment.

### Steps

1. Start the Core Package installation wizard by running the appropriate setup file.
2. Choose the environment: 7-Mode or Cluster-Mode.

**Attention:** After the Core Package installation is complete, you cannot change the environment.

3. Depending on your environment, perform the appropriate action:

If you selected ...	Then...
7-Mode environment	<p>a. Select Standard edition or Express edition to specify which version of the DataFabric Manager server you want to install:</p> <ul style="list-style-type: none"> <li>• If you select the Standard edition, you can configure your environment information and your future backup and recovery operations manually in the OnCommand console after the installation.</li> <li>• If you select the Express edition, you can use the Express Configuration wizard to simplify the setup of your environment and your future backup and recovery operations.</li> </ul> <p>b. Continue responding to the prompts.</p>
Cluster-Mode environment	Continue responding to the prompts.

4. Select the installation location, if different from the default.

**Note:** Do not change the default location of the local TempFolder directory, or the installation fails. The installer automatically extracts the installation files to the %TEMP% location.

5. Review the summary screen and consider whether you want to make changes before completing the installation, and then click **Install**.
6. When the Installation Complete screen is displayed, click **Next** to continue.
7. If you want to start the OnCommand console, clear your browser cache, and then select Launch OnCommand console.

If you have not yet installed OnCommand Unified Manager Host Package, download and install the Host Package on the same server or on a different server, clear your browser cache, and then start the OnCommand console from your browser.

8. Click **Finish**.

#### After you finish

- During the installation process, the installer creates some temporary folders that are automatically deleted the next time you reboot the system.  
You can delete these folders without adversely affecting the installation of the Core Package.
- When you finish installing the Core Package, you can install the Host Package and use the configuration wizard to configure a host service.

#### Related concepts

*[Installing OnCommand Unified Manager Host Package](#) on page 48*

*OnCommand Unified Manager Core Package hardware and software requirements* on page 27  
*Comparison of OnCommand Unified Manager Express edition and Standard editions (7-Mode environments only)* on page 20

### Related tasks

*Downloading OnCommand Unified Manager Core Package* on page 37  
*Determining whether a storage system belongs to a workgroup or a domain* on page 70

### Related references

*Software required prior to installing OnCommand Unified Manager Core Package* on page 27

## Installing OnCommand Unified Manager Core Package on Linux

After you have met the guidelines, requirements, and restrictions for installing OnCommand Unified Manager Core Package, you can follow the prompts in the installation wizard to install the software.

### Before you begin

- You must have downloaded the setup file.
- You must have the following items:
  - The DataFabric Manager server license key
  - Credentials for network access
  - The IP address of the server on which you are installing the software
  - The path of the directory on which you want to install, if different from the default location
- In addition, your antivirus software must include the following changes:
  - Either the antivirus software is disabled or an exclusion is added for the DataFabric Manager server.  
If this condition is not met, the installation fails.
  - Sybase ASA files are excluded to avoid both DataFabric Manager server performance issues and the possibility of database corruption.
- If you are installing the Core Package on Red Hat Enterprise Linux Advanced Platform 5.x, the SELinux status must be disabled.

### About this task

If you have to manage both 7-Mode and clustered environments for Data ONTAP, you must install two separate Core Packages on two Linux servers.

For optimal performance, the only other application that must be installed on the system running Core Package software is OnCommand Unified Manager Host Package.



During the Core Package installation, if you select the Standard edition, you configure the host service manually. If you select the Express edition in the Setup wizard, you can use the Express Configuration wizard to simplify the setup of your environment.

**Note:** The Express edition is available only when you choose 7-Mode as the environment.

## Steps

1. Start the Core Package installation wizard by running the appropriate setup file.
2. Follow the prompts and then select the environment: 7-Mode or Cluster-Mode.

**Attention:** After the Core Package installation is complete, you cannot change the environment.

3. Depending on your environment type, perform the appropriate action:

If you selected...	Then...
7-Mode environment	<ol style="list-style-type: none"> <li>a. Select Standard edition or Express edition to specify which version of DataFabric Manager server you want to install. <ul style="list-style-type: none"> <li>• If you select the Standard edition, you can configure your environment information and your future backup and recovery operations manually in the OnCommand console after the installation.</li> <li>• If you select the Express edition, you can use the Express Configuration wizard to simplify the setup of your environment and your future backup and recovery operations.</li> </ul> </li> <li>b. Continue responding to the prompts.</li> </ol>
Cluster-Mode environment	Continue responding to the prompts.

When the URL for opening the OnCommand console is displayed, the installation is complete.

4. Copy and paste the URL to a browser to open the OnCommand console.

## Related concepts

[Installing OnCommand Unified Manager Host Package](#) on page 48

[OnCommand Unified Manager Core Package hardware and software requirements](#) on page 27

[Comparison of OnCommand Unified Manager Express edition and Standard editions \(7-Mode environments only\)](#) on page 20

## Related tasks

[Downloading OnCommand Unified Manager Core Package](#) on page 37

### Related references

[Software required prior to installing OnCommand Unified Manager Core Package](#) on page 27

## Installing the OnCommand Unified Manager Core Package with a script

You can quickly deploy the OnCommand Unified Manager Core Package using a scripted, unattended installation. The installation script contains the installation settings for the Core Package.

### Before you begin

- You must have administrator privileges for the Windows computer on which you are installing the Core Package.
- The script must contain the following required information:
  - OnCommand Unified Manager server license key
  - Credentials for network access
  - IP address of the server on which you are installing
  - Directory path where you want to install if different from the default location

### About this task

The installation script can reside in one of the following locations:

- Default installation script
- FTP
- HTTP/HTTPS
- NFS
- Local disk
- USB flash drive

### Steps

1. Create a script using the supported commands.
2. Edit the installation script as needed to change the options that are unique for each installation.
3. Save the script to the location from which you want to run it.
4. Run the scripted installation or set a schedule for when the script is to run.

### After you finish

- If you selected the Express edition in the Setup wizard during the installation process, you can use the Express Configuration wizard to simplify the setup of your environment for initial backup and recovery operations.

- If you selected DataFabric Manager server Standard edition during the installation process, you must configure your environment manually before backup and recovery operations can take place.

### Related references

[Required ports for the Core Package](#) on page 31

## Options you can use for the Windows installation script

You can use the options to configure the settings in the installation script when installing the Core Package on Windows.

You can use the following options in the script:

Script	Description
/S	Performs the installation silently, without any installation screens appearing.
/OPMOD=7-Mode /OPMOD=Cluster-Mode	Specifies whether the environment is 7-Mode or clustered. If the option is set to 7-Mode, the Core Package for a 7-Mode environment is installed. If the option is set to Cluster-Mode, the Core Package for a clustered environment is installed.
/EXPRESS_EDITION=YES /EXPRESS_EDITION=NO	Specifies whether the Express edition or Standard edition is installed. If the option is set to YES, the Express edition is installed. If the option is set to NO, the Standard edition is installed.  <b>Note:</b> If you do not specify this option, for a new installation the Standard edition is installed; for an upgrade, the installer checks the previous edition that is in use, and then upgrades that edition.
/LICENSEKEY= <i>license_key</i>	Specifies the license key.
/UPGRADE	Specifies that an upgrade is required.

No options are available for the following situations:

- Accepting or rejecting the AutoSupport agreement from the CLI.  
When a silent installation is performed, the installation assumes that you accept the AutoSupport agreement.
- Specifying whether you want to perform a backup during the upgrade.  
In a silent upgrade, a backup is performed by default.

- Specifying the installation directory or database backup location directory; otherwise, the default DataFabric Manager server paths are used.

## Options you can use for the Linux installation script

You can use the options to configure the settings in the installation script when installing the Core Package on Linux.

You can use the following options in the script:

Option	Description
-a <i>yes</i> -a <i>no</i>	Specifies that the AutoSupport notice agreement is accepted. If the option is not specified, the AutoSupport notice is displayed, which prompts you to accept or decline.
-d <i>installation_directory</i>	Specifies the path of the installation directory. If the option is not specified, the Core Package is installed in the default directory, for example, <code>/opt/IBMdsm</code>
-l <i>licenses_key</i>	Specifies the license key. If the option is not specified, a message is displayed during the installation that prompts you to enter the license key.
-b <i>yes</i> -b <i>no</i>	Specifies whether to perform a database backup during the upgrade.
-B <i>backup_file_name</i>	Specifies the backup file name. If the option is not specified, the default backup file name is stored in the <code>data</code> directory of the installation directory.
-n	Removes NetCache support if you upgrade your DataFabric Manager server.  <b>Note:</b> You should use this option only for upgrades from DataFabric Manager server versions earlier than 3.8.  If the option is not specified and you are upgrading from a version earlier than 3.8, a message is displayed about the removal of NetCache support for DataFabric Manager server.

Option	Description
-m 7-Mode -m Cluster-Mode	Specifies whether the environment is 7-Mode or clustered. If the option is set to 7-Mode, the Core Package for a 7-Mode environment is installed. If the option is set to Cluster-Mode, the Core Package for a clustered environment is installed. If you do not specify a mode and if you have the Express edition installed, your server is upgraded to the Express edition.
-s yes -s no	Specifies whether the Express edition or the Standard edition is installed. If the option is set to yes, the Express edition is installed; if the option is set to no, the Standard edition is installed. <p><b>Note:</b> You cannot use the Express edition if you are installing in a clustered environment. However, if you upgrade to clustered environment with the Express edition, you are prompted to select the edition.</p> If you do not specify the option, for a new installation, you are prompted to select an option; for an upgrade, the installer checks the previous edition that is in use, and then upgrades that edition.
-w wrapper_directory	Specifies the path for installing the DataFabric Manager server CLI wrappers.

## Setting up Web security after restoring a database on a new OnCommand Unified Manager Core Package installation

You can restore a database backup from another DataFabric Manager server instance to the new DataFabric Manager server installation, for instance, when you want to upgrade your hardware; however, database backups do not include the key and certificate file, so these must be generated or imported, and HTTPS must be enabled if it was set on the old system.

### About this task

Perform these steps from a console session on the new DataFabric Manager server after you install the OnCommand Unified Manager Core Package.

### Steps

1. Perform one of the following actions:

- Enter the `dfm ssl service setup` command to create new client certificates.
  - Enter `dfm ssl server import` to import an existing certificate.
2. If the HTTPS service was enabled on the system from which the database backup was made, you must also enable the HTTPS service on the new system by entering `dfm option set httpsEnabled=Yes`.

## Installing N series Management Console

You can download and install N series Management Console through the OnCommand console. N series Management Console is required to perform many of your physical storage tasks. You must install N series Management Console 3.3, which contains bug fixes found in the 3.2 version.

### Before you begin

You must be authorized to perform all the steps of this task; your RBAC administrator can confirm your authorization in advance.

### About this task

During this task, the OnCommand console launches the Operations Manager console. Depending on your browser configuration, you can return to the OnCommand console by using the Alt-Tab key combination or clicking the OnCommand console browser tab. After the completion of this task, you can leave the Operations Manager console open, or you can close it to conserve bandwidth.

### Steps

1. Log in to the OnCommand console if necessary.
2. Click the **File** menu, and then click **Download Management Console**.

A separate browser tab or window opens to the Management Console Software page in the Operations Manager console.

3. Click the download link for the Linux or Windows installation.
4. In the download dialog box, click **Save File**.

The executable file is downloaded to your local system, from the system on which the OnCommand Unified Manager Core Package was installed.

5. From the download directory, run the `nmconsole-setup-xxx.xxx` executable file.

The N series Management Console installation wizard opens.

6. Follow the prompts to install N series Management Console.

### Result

After installation, you can access N series Management Console from the following locations:

- On Windows systems, the default installation path is `C:\Program Files\IBM\Management Console`.  
You can launch the console from the IBM directory on the Start menu.
- On Linux systems, the default installation path is `/usr/lib/IBM/management_console/`.  
You can launch the console from `/usr/bin`.

## Installing or upgrading OnCommand Unified Manager Windows PowerShell cmdlets

To use Windows PowerShell cmdlets with the OnCommand console, you must manually install them. You also must manually upgrade the cmdlets if you upgrade your version of the console.

### Before you begin

You must have installed the appropriate version of OnCommand Unified Manager Core Package.

### Steps

1. Navigate to the appropriate folder:

If you have installed the OnCommand Unified Manager Core Package on...	Then do this...
A Windows server	Navigate to the <code>DFM_Install_dir\DFM\web\clients</code> folder.
A Linux server	Navigate to the <code>/opt/IBMdfm/web/clients</code> folder.

This folder contains the Windows PowerShell installation package.

2. Execute the installation file:

If you are installing the cmdlets on...	Then do this...
The same Windows server	Double-click the executable file and follow the installation wizard prompts.
A different Windows server	Copy the installation file to the server or workstation to which you want to install the cmdlets and then execute the installation.
A Linux server	Copy the installation file to a Windows server on which you want to install the cmdlets and then execute the installation.  Windows PowerShell Cmdlets are not supported on Linux.

### After you finish

You can execute the Windows PowerShell cmdlets for OnCommand console.

# Installing OnCommand Unified Manager Host Package

---

OnCommand Unified Manager Host Package provides management capabilities for your virtualized environment and, when OnCommand Unified Manager Core Package is also installed, for your physical storage environment.

You can install OnCommand Unified Manager Host Package using the installation wizard, or you can run an unattended installation by using a script at the Windows command prompt.

## Downloading the OnCommand Unified Manager Host Package

The OnCommand Unified Manager Host Package provides management capabilities for your virtual environment. Before installing the OnCommand Unified Manager Host Package, you must download the software package, which is either a 32-bit or 64-bit executable file, from the N series support website (accessed and navigated as described in [Websites](#) on page 10).

### Related tasks

[Downloading OnCommand Unified Manager Core Package](#) on page 37

## Prerequisites for installing the Host Package

You must ensure that you meet all the installation requirements before you begin installing the Host Package.

- You must be a member of the local administrators group on the system that you use for your Host Package installation.
- You must be a member of the local administrators group or a domain user on the vCenter server.
- vSphere 5.0 or later must be installed on your vCenter server.
- You must have purchased a license for SnapManager for Virtual Infrastructure to back up and recover data.
- The system that you use for your Host Package installation must belong to a domain rather than a workgroup.
- You must have administrator privileges for the Windows computer on which you are installing the Host Package.
- The DNS name of the Windows computer on which you are installing the Host Package must match the actual computer name, and the computer name must not be more than 15 characters.
- The Windows firewall must be set to allow exceptions.



- You must have the following items available:
  - A Windows system account user name and password
  - The path of the directory to which you want to install, if different from the default
  - The IP address, user name, and password of the DataFabric Manager server
  - The IP address, user name, and password of the vCenter server
- If you are installing the Host Package along with the Core Package, you must install Core Package software before installing Host Package software.  
If you install Host Package software first, you must start the configuration wizard after you finish installing Core Package software.

## Installing OnCommand Unified Manager Host Package

After you have reviewed the guidelines, requirements, and restrictions for installing OnCommand Unified Manager Host Package, you can execute the installation wizard to install the software.

### About this task

If you are installing the Host and Core Packages on the same system, a fully qualified domain name must be used for the Core Package instead of *localhost*.

The installer creates a locks directory, which is used to coordinate access to resources in the vSphere Client. The locks directory is located under the OnCommand Unified Manager directory. You must not change the name or the location of this directory.

The IP address and host name for the system on which you are installing OnCommand Unified Manager Host Package must have a DNS registration that resolves properly between the host service and the DataFabric Manager server.

You should use a dedicated Windows server for each vCenter Server instance. Having other applications installed on the same server can consume valuable system resources and might drastically reduce performance.

If the installer fails during the installation of OnCommand Unified Manager Host Package, in some rare cases, the installer does not rollback the changes made to the system. When this happens, you must manually remove OnCommand Unified Manager Host Package using the Control Panel application for your operating system and then delete the folder where the OnCommand Unified Manager Host Package was installed.

### Steps

1. Start the Host Package installation wizard by running the setup file.
2. Depending on your operating system, either enable Windows PowerShell or install it before you continue with the installation of OnCommand Unified Manager Host Package:
  - On Windows Server 2008 R2, PowerShell is installed by default and you do not have to enable it on the server.

- On Windows Server 2008, PowerShell is not installed by default and you must enable it on the server after it is installed.

To enable PowerShell, you must follow the instructions in the pop-up dialog box.

3. Select the installation location.
4. On the Service Credentials page, type the user name and password for the system on which you are installing OnCommand Unified Manager Host Package.

You must type the user name in the following format:

**`domain name\user name`**

5. On the Configure Communication Ports page, type the port numbers that you want to use or accept the default port numbers.

**Note:** For custom firewalls, ensure that the Core and Host Packages are using the same port numbers.

6. On the Configure DataFabric Manager server page, type the IP address and the user name and password used to access the DataFabric Manager server.

You can skip the validation of the DataFabric Manager server if you do not have the server credentials available.

7. On the vCenter Server Information page, type the host name or IP address of the system on which the vCenter Server is installed and the user name and password that allows the vSphere Client to communicate with the vCenter Server.

8. Click **Install** on the summary page, and then click **Finish**.

When you next reboot the system, you might see some hidden MS-DOS command windows briefly appear in the background during the removal of installer support files that could not be deleted during the installation of OnCommand Unified Manager Host Package.

### After you finish

- During the installation process, the installer creates some temporary folders that are automatically deleted when you next reboot the system.  
If you want to delete these folders, you can do so without adversely affecting the installation of the Host Package.
- The host service must be configured to perform backups.

### Related concepts

[Comparison of OnCommand Unified Manager Express edition and Standard editions \(7-Mode environments only\)](#) on page 20

### Related tasks

[Downloading the OnCommand Unified Manager Host Package](#) on page 48

[Determining whether a storage system belongs to a workgroup or a domain](#) on page 70

*Configuring the OnCommand Unified Manager Express edition server (7-Mode environments only)* on page 55

#### Related references

*Operating system requirements* on page 33

*Software required prior to installing OnCommand Unified Manager Host Package* on page 34

*Designated ports for the OnCommand Unified Manager Host Package* on page 35

## Shared lock directories with Virtual Storage Console

You can use shared lock directories to coordinate mutually exclusive activities on shared resources.

OnCommand Unified Manager Host Package installs the following directories during installation:

- Locks
- VMware Plug-in
- Host Services

If you plan to install OnCommand Unified Manager Host Package on the same system as Virtual Storage Console 2.1.1 or later, a best practice is to set up a shared lock directory. A shared lock directory is used for products that share resources through the vSphere client. This ensures that mutually exclusive functions do not occur in parallel—for example, cloning of a virtual machine through Virtual Storage Console at same time that OnCommand Unified Manager Host Package is attempting to restore the same virtual machine.

### Setting up a shared lock directory

To enable the coordination of mutually exclusive activities on shared resources when OnCommand Unified Manager Host Package and Virtual Storage Console are installed on the same system, you can create a shared lock directory.

#### Before you begin

You must have installed Virtual Storage Console 2.1.1 or later to create a shared lock directory.

#### About this task

Both OnCommand Unified Manager Host Package and Virtual Storage Console install a locks directory that is not shared by default. You can disable the locks directory in OnCommand Unified Manager Host Package and set up the Virtual Storage Console locks directory as a shared lock directory.

#### Steps

1. Stop the OnCommand Host Service VMware Plug-in:
  - a) Click **Start > Control Panel**.

b) Double-click **Services**.

A list of enabled and disabled services for the system is displayed.

c) Locate the OnCommand Host Service VMware Plug-in.

You can filter the list of services by clicking any of the column headers at the top of the list.

d) Right-click the OnCommand Host Service VMware Plug-in to open the context-sensitive menu and select **Stop**.

The OnCommand Host Service VMware Plug-in is disabled.

2. Delete the locks subdirectory in the OnCommand Unified Manager Host Package installation directory: <OC installation directory>\locks.

3. Locate and open the `smvi.override` file.

This file is installed by default in: <OC installation directory>\VMware Plugin\etc\smvi.override.

4. Add the following line: `shared.subplugin.lock.directory=<VSC installation directory>\locks`

5. Save and close the `smvi.override` file.

6. Restart the OnCommand Host Service VMware Plug-in.

### Result

OnCommand Unified Manager Host Package and Virtual Storage Console will share the same locks subdirectory.

## Installing the OnCommand Unified Manager Host Package using a script

You can quickly deploy the OnCommand Unified Manager Host Package by creating a script customized to the needs of your particular environment, and then performing an unattended installation. The installation script that you create contains your customized installation settings for OnCommand Unified Manager Host Package.

### Before you begin

- You must have administrator privileges for the Windows computer on which you are installing OnCommand Unified Manager Host Package.
- Your script must contain the following required information:
  - Credentials for network access
  - IP address of the server on which you are installing
  - The path of the directory to which you want to install, if different from the default location

**About this task**

You can store your customized installation script in one of the following locations:

- Default installation script
- FTP
- HTTP/HTTPS
- NFS
- Local disk
- USB flash drive

**Steps**

1. Create a script using the supported commands.
2. Edit the installation script as needed to change the options that are unique for each installation.
3. Save the script in the location from which you want to run it.
4. Run the scripted installation or set a schedule for when the script is to run.

**After you finish**

If you are installing OnCommand Unified Manager Host Package in a 7-Mode environment, you must configure the host service to work with the DataFabric Manager server.

If you selected the OnCommand Unified Manager Express edition during the installation of the Core Package, you can use the configuration wizard to configure the host service.

**Related references**

[Designated ports for the OnCommand Unified Manager Host Package](#) on page 35

**Scripted install options for OnCommand Unified Manager Host Package**

If you choose to install OnCommand Unified Manager Host Package in a Windows environment by using an unattended script, you can use certain options to create that script.

The following options can be used in the script:

Option	Description
<code>setup.exe /s /V"/qn PLUGIN_TYPE</code>	<ul style="list-style-type: none"> <li>• Performs the installation silently, without any interactive screens appearing</li> </ul>
<code>SVCUSERNAME</code>	<ul style="list-style-type: none"> <li>• Specifies the host service user name</li> </ul>
<code>SVCUSERPASSWORD</code>	<ul style="list-style-type: none"> <li>• Specifies the host service password</li> </ul>

Option	Description
SVCCONFIRMUSERPASSWORD	<ul style="list-style-type: none"> <li>Confirms the host service password</li> </ul>
DFM_SERVER_INFO	<ul style="list-style-type: none"> <li>Specifies the DataFabric Manager server IP address</li> </ul>
DFM_SERVER_USERNAME	<ul style="list-style-type: none"> <li>Specifies the DataFabric Manager server user name</li> </ul>
DFM_SERVER_PASSWORD	<ul style="list-style-type: none"> <li>Specifies the DataFabric Manager server password</li> </ul>
VMWARE_PLUGIN_IP	<ul style="list-style-type: none"> <li>Specifies the vCenter Server IP address</li> </ul>
VCENTER_USERNAME	<ul style="list-style-type: none"> <li>Specifies the vCenter Server user name</li> </ul>
VCENTER_PASSWORD	<ul style="list-style-type: none"> <li>Specifies the vCenter Server password</li> </ul>
<b>Ports</b>	
VCENTER_PORT	<ul style="list-style-type: none"> <li>Specifies the default port for vCenter</li> </ul>
SMVI_PLUGIN_PORT	<ul style="list-style-type: none"> <li>Specifies the default port through which secure channel communication (SSL traffic) between DataFabric Manager server and Host Server occurs</li> </ul>
DFM_SERVER_SSL_PORT	<ul style="list-style-type: none"> <li>Specifies the default port through which the DataFabric Manager server and host service SSL communicate</li> </ul>
DFM_SERVER_COM_PORT	<ul style="list-style-type: none"> <li>Specifies the default port through which the DataFabric Manager server and host service communicate</li> </ul>
HS_ADMIN_PORT	<ul style="list-style-type: none"> <li>Specifies the administration port for the host service</li> </ul>
HS_MGM_PORT	<ul style="list-style-type: none"> <li>Specifies the management port for the host service</li> </ul>
PLUGIN_PORT	<ul style="list-style-type: none"> <li>Specifies the default port through which the host service communicates with the VMware Plug-in</li> </ul>

# Setting up your system

---

After you finish installing the OnCommand Unified Manager Host Package or Core Package, you can configure your system.

## Configuring the OnCommand Unified Manager Express edition server (7-Mode environments only)

You can use the **Express Configuration** wizard to simplify the setup of your system in a 7-Mode environment. The wizard sets up the Express edition server to discover and monitor storage systems and host services, populates a default resource pool, associates available storage, and creates and attaches a default storage service.

### Before you begin

- You must have installed the following:
  - OnCommand Unified Manager Core Package
  - OnCommand Unified Manager Host Package
  - VMware vCenter
  - Adobe Flash Player 8.0 or later
  - OnCommand Unified Manager Windows PowerShell cmdlets
- You might need some or all of the following information to complete this task:
  - IP address or FQDN for each host service
  - vCenter Server name and credentials
  - Name and credentials for each storage system
  - Port numbers, if different than the defaults
  - NDMP user name and password
  - SNMP credentials

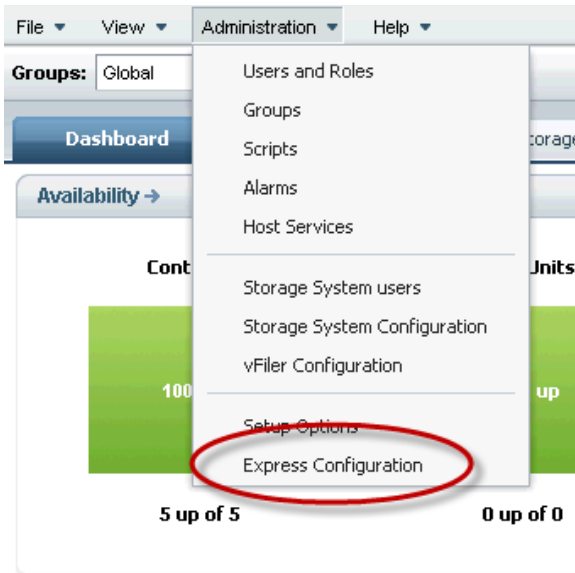
### About this task

The **Express Configuration** wizard configures two default storage services, remote backup and mirror, with deduplication enabled for increased efficiency. You can validate your performance requirements to ensure that these policies align with your requirements.

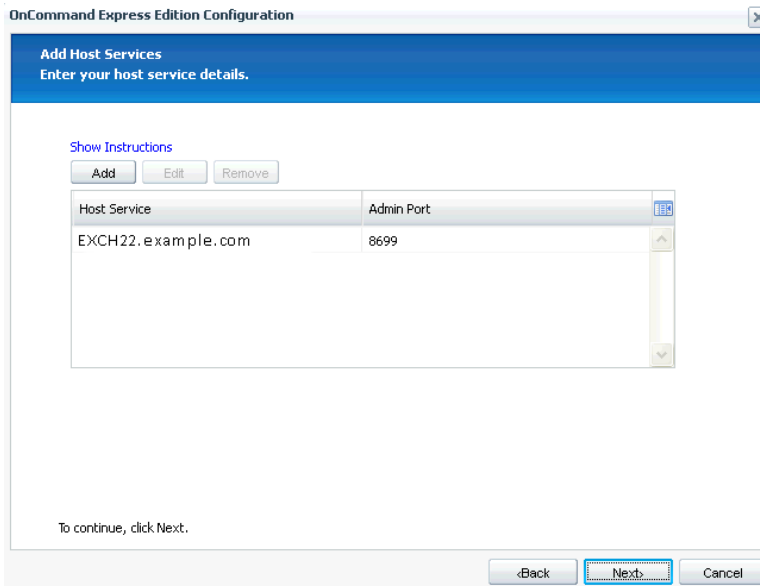
### Steps

1. Click the **Administration** menu, then click the **Express Configuration** option.

The **Express Configuration** wizard might open automatically the first time you log in to the OnCommand console after you finish the Express edition installation.



2. On the **Add Host Service** page, click **Add** to register a host service with the DataFabric Manager server.



You must register each host service with the DataFabric Manager server, so that OnCommand Unified Manager is made aware of the host service and can manage it.

3. Enter values for **IP Address/Name** and **Admin Port** for the host service, then click **Add**.



If using the name, it must be the fully qualified domain name (FQDN). If you are installing the Host Package and the DataFabric Manager server on the same system, you must specify the hostname or a fully qualified domain name, not localhost, for the DataFabric Manager server.

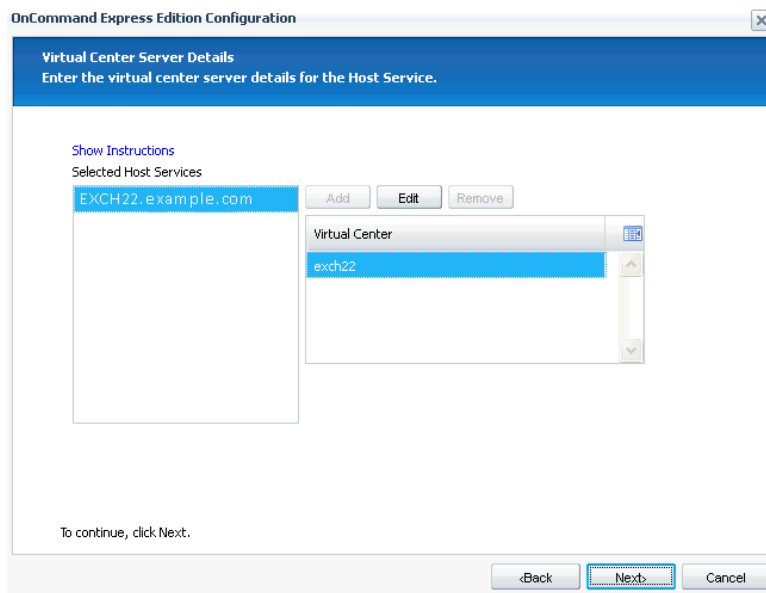
- Optional: If you need to edit settings for a host service, click **Edit**, make the changes, and then click **OK**.

Editing is enabled only for host services that you add manually to the list.

- Add or edit other host services as needed, then click **Next**.

When you click **Next**, all of the hosts in the list are registered, authorized, and discovered.

- In the **Virtual Center Server Details** page, select a host service from the list.



- If a virtual center server is not listed for the host service, click **Add** and enter the virtual center server name and credentials, then click **OK**.

- On the **Add Storage System** page, click **Add** to register a storage system with the DataFabric Manager server.

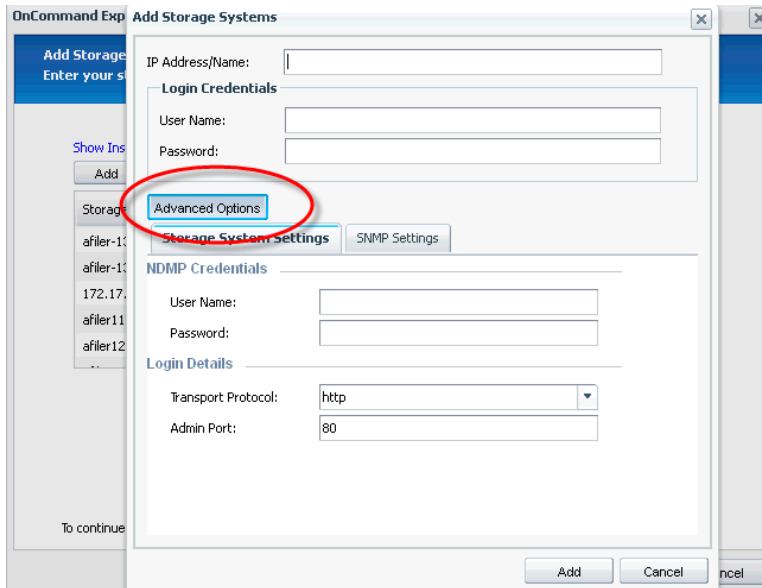
You must register each storage system with the DataFabric Manager server, so that OnCommand Unified Manager is made aware of the storage system and can monitor it and use it for backup.

- Enter values for **IP Address/Name**, **User Name**, and **Password** for the storage system.

The login credentials are validated and set in the DataFabric Manager server. Login credentials are required for backups to succeed.

- Modify the NDMP and SNMP settings in the **Advanced Options** section.

If the NDMP credentials are not set explicitly, then the login credentials are used for NDMP. NDMP credentials are required for backups to succeed.



#### 11. Click **Add**.

The credentials are validated and the storage system you added appears in the list of storage systems.

#### 12. Optional: If you need to edit the settings for a storage system, click **Edit**, make the changes, then click **OK**.

#### 13. Optional: Add or edit other storage systems as needed, then click **Next**.

The storage systems for which you set the credentials are pushed to the host service and the systems are added to a default resource pool.

#### 14. When the status screen appears, showing the configuration progress details, click **Finish**.

### Result

The configuration wizard implements the following:

- The storage systems are configured in the DataFabric Manager server.
- The storage systems are associated with the selected host service.
- The storage systems are added to a default resource pool.
- A default remote protection storage service is created.

### After you finish

You can monitor details about discovered virtual machines from the Host Services window in the OnCommand console.

Verify that the SQL service is running. This service must be running for DataFabric Manager server database backup and restore operations to succeed.

## Configuring the OnCommand Standard edition server with host services (7-Mode only)

You must configure the host services to communicate with DataFabric Manager server, vCenter Servers, and storage systems that are required for backup and recovery of your data.

### Before you begin

You must have installed the following:

- OnCommand Unified Manager Core Package
- OnCommand Unified Manager Host Package
- Adobe Flash Player 8.0 or later
- OnCommand Unified Manager Windows PowerShell cmdlets

### About this task

The tasks identified in this configuration process can also be completed after initial installation and configuration. See the OnCommand console Help for information.

During the configuration process, job status and details about jobs can be viewed from the Jobs tab.

### After you finish

After completing the configuration process, you can create backups of virtual objects from the Server tab.

### Steps

1. *Verifying that a host service is registered with the DataFabric Manager server (7-Mode environments only)* on page 60

You must properly register a host service with a DataFabric Manager server before the server can discover objects and before you can perform a backup in a virtual environment.

2. *Authorizing a host service to access storage system credentials (7-Mode environments only)* on page 61

Before you can create backup jobs, you must authorize the host service to access the storage system credentials if it is not already authorized.

3. *Associating a host service with vCenter Server (7-Mode environments only)* on page 62

In a VMware environment, you must authorize each host service and associate it with a vCenter Server instance. This provides part of the communication needed for discovery, monitoring, backup, and recovery of virtual server objects such as virtual machines and datastores.

4. *Verifying communication between the host service and the OnCommand plug-in* on page 65

You can verify that the host service is communicating with the OnCommand Unified Manager VMware Plug-in by ensuring that virtual machines are associated with the host service. If the host service is not communicating with the plug-in, the software cannot perform backup jobs.

5. [Associating storage systems with a host service \(7-Mode environments only\)](#) on page 66  
For each host service instance, you must associate one or more storage systems that host virtual machines for the host service. This enables communication between the service and storage to ensure that storage objects, such as virtual disks, are discovered and that host service features work properly.
6. [Editing storage system login and NDMP credentials from the Host Services tab \(7-Mode environments only\)](#) on page 68  
You must provide valid login and NDMP credentials for storage systems so that the DataFabric Manager server can access them. If the server cannot access the storage, your backups might fail.

## Verifying that a host service is registered with the DataFabric Manager server (7-Mode environments only)

You must properly register a host service with a DataFabric Manager server before the server can discover objects and before you can perform a backup in a virtual environment.

### About this task

A host service can be registered either with the DataFabric Manager server during installation, or later from the OnCommand console. However, you might want to verify that the registration is still valid when troubleshooting problems or prior to performing an action involving a host service, such as adding a storage system to a host service.

### Steps

1. From the **Administration** menu, select **Host Services**.  
The Host Services tab opens.
2. In the host services list, verify that the name of the host service is listed.  
When a host service is registered with the DataFabric Manager server, it displays in the host services list.
3. For the selected host service, verify that Discovery Status is OK and that Status is Up.

### After you finish

If the host service is not displayed in the list, you must add and configure the new host service.

If Status is other than Up, or Discovery Status is other than OK, edit the host service to provide the correct properties.

### Related tasks

[Associating a host service with vCenter Server \(7-Mode environments only\)](#) on page 62

In a VMware environment, you must authorize each host service and associate it with a vCenter Server instance. This provides part of the communication needed for discovery, monitoring, backup, and recovery of virtual server objects such as virtual machines and datastores.

## Authorizing a host service to access storage system credentials (7-Mode environments only)

Before you can create backup jobs, you must authorize the host service to access the storage system credentials if it is not already authorized.

### Before you begin

The host service must be registered with the DataFabric Manager server.

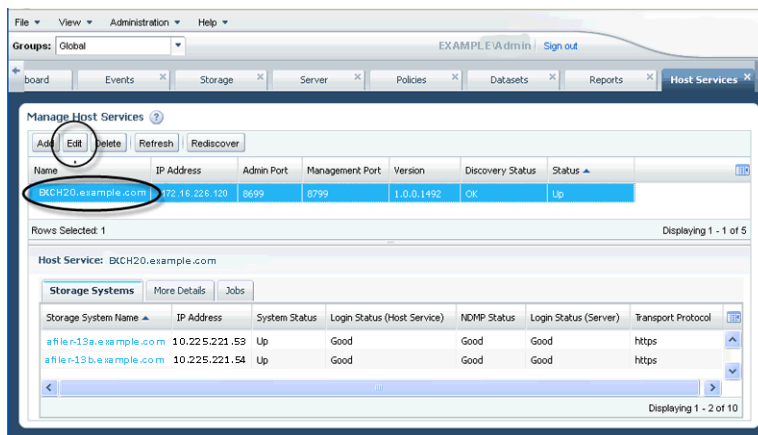
### About this task

The DataFabric Manager server does not support a host service created as a generic service from Microsoft Windows Server Failover Cluster Manager.

### Steps

1. From the **Administration** menu, select the **Host Services** option.
2. In the host service list, select the host service that you want to authorize and click **Edit**.

If a host service is not displayed in the list, you must add the host service and verify that it is registered with the DataFabric Manager server.



3. In the **Edit Host Service** dialog box, click **Authorize**, review the certificate, and then click **OK**.  
If the Authorize area is unavailable, the host service is already authorized.  
When authorization is complete, the Authorize area becomes disabled.
4. Click **OK**.

### After you finish

If you do not have storage systems associated with the host service, you must associate at least one storage system to be able to perform backups.

After you finish editing the host service properties, you can view job progress from the Jobs subtab on the Manage Host Services window and you can view details about each job from the Jobs tab.

## Associating a host service with vCenter Server (7-Mode environments only)

In a VMware environment, you must authorize each host service and associate it with a vCenter Server instance. This provides part of the communication needed for discovery, monitoring, backup, and recovery of virtual server objects such as virtual machines and datastores.

### Before you begin

The host service must be registered with the DataFabric Manager server; otherwise, it does not appear in the list of available host services.

The following information must be available:

- Name or IP address of the vCenter Server instance
- User name and password for access to the vCenter Server instance

### About this task

The DataFabric Manager server does not support a host service created as a generic service from Microsoft Windows Server Failover Cluster Manager.

### Steps

1. From the **Administration** menu, select the **Host Services** option.
2. In the host services list, select the host service that you want to associate and then click **Edit**.  
If the host service is not displayed in the list, you must add the host service and verify that it is registered with the DataFabric Manager server.
3. In the **Edit Host Service** dialog box, click **Authorize**, review the certificate, and then click **OK**.  
If the Authorize area is disabled, the host service is already authorized.

**Edit Host Service**

**Name and Properties**

IP Address/Name: EXCH20.example.com

Admin Port: 8699

Management Port: 8799

**Authorization**

Authorize this host service to access storage system credentials. Authorize

**vCenter Properties**

vCenter Name: exch21

User Name: \*\*\*\*\*

Password: ●●●●●

**Storage Systems**

Associate the storage systems to be managed by the host service.

Associate Edit

Storage System	Login Status (Server)	NDMP Status	Transport Protocol
afiler7.example.com	Good	Good	https
afiler8.example.com	Good	Good	https
exchfiler3.example.com	Good	Good	https

OK Cancel

#### 4. Enter the vCenter Server properties.

You must specify the host name or the fully qualified domain name for host service registration. Do not use "localhost."

If the properties fields are populated, then a server is already associated with the host service that you selected.

If the vCenter Properties section is not displayed, you might have selected a host service that is installed in an environment other than VMware.

#### 5. Click **OK**.

#### After you finish

If you do not have storage systems associated with the host service, you must associate at least one storage system to be able to perform backups.

After you finish editing the host service properties, you can view job progress from the Jobs subtab on the Manage Host Services window and you can view details about each job from the Jobs tab.

#### Related tasks

*Verifying that a host service is registered with the DataFabric Manager server (7-Mode environments only)* on page 60

You must properly register a host service with a DataFabric Manager server before the server can discover objects and before you can perform a backup in a virtual environment.

## Adding and registering a host service (7-Mode environments only)

Before you can use a VMware host, you must add the host service and register it with the DataFabric Manager server.

### Before you begin

The host service firewall must be disabled for the administration and management ports.

You must be authorized to perform all the steps of this task; your RBAC administrator can confirm your authorization in advance.

**Attention:** Host services can be registered with only one DataFabric Manager server at a time. Before you register a host service with a new DataFabric Manager server, you must first manually unregister the host service from the previous DataFabric Manager server. See the *DataFabric Manager Host Agent Installation and Administration Guide* for instructions on how to unregister a host service from the DataFabric Manager server.

### About this task

The DataFabric Manager server does not support a host service created as a generic service from Microsoft Windows Server Failover Cluster Manager.

If you unregister a cluster-level host service, the DataFabric Manager server does not automatically register the host service when you re-register the node. You must re-register or add the host service using the cluster IP address.

**Attention:** If you change the name of the machine after installing the OnCommand Unified Manager Host Package, you must uninstall the OnCommand Unified Manager Host Package and perform a fresh installation.

### Steps

1. Click the **Administration** menu, then click the **Host Services** option.
2. In the **Host Services** tab, click **Add**.
3. In the **Add Host Service** dialog box, type the IP address or the DNS name of the host on which the host service is installed.
4. If the administrative port has been changed in the host service from the default, type the changed port number.

This is the port that is used by plug-ins to discover information about the host service.

5. Click **Add**.

### Result

The host service is added and registered with the DataFabric Manager server.



**Tip:** If you see an error stating that the requested operation did not complete in 60 seconds, wait several minutes and then click **Refresh** to see if the host service was actually added.

### After you finish

To make the host service fully operational, you might need to authorize the host service. In a VMware environment, you must edit the host service to add the vCenter Server credentials.

### Related information

*IBM N series support website: [www.ibm.com/storage/support/nseries](http://www.ibm.com/storage/support/nseries)*

## Verifying communication between the host service and the OnCommand plug-in

You can verify that the host service is communicating with the OnCommand Unified Manager VMware Plug-in by ensuring that virtual machines are associated with the host service. If the host service is not communicating with the plug-in, the software cannot perform backup jobs.

### About this task

If a host service is communicating with the VMware plug-in, the virtual machines associated with the host service display in the VMs list on the Server tab.

### Steps

1. Select the **Administration** menu and then select the **Host Services** option.  
The Manage Host Services window opens.
2. In the Host Services list, identify the name of the host service that you want to validate.
3. Select the **View** menu and then select the **Server** option.
4. Scroll through the list of virtual machines to see if the VMs related to the host service are listed.  
If the virtual machines are listed, the host service is communicating properly with the plug-in.

### After you finish

If the virtual machines related to the host service do not display, consult the event logs on the host service system. You can also use the `List-HSResources` PowerShell cmdlet to verify that the host service is properly retrieving the virtual machine list from VMware.

## Associating storage systems with a host service (7-Mode environments only)

For each host service instance, you must associate one or more storage systems that host virtual machines for the host service. This enables communication between the service and storage to ensure that storage objects, such as virtual disks, are discovered and that host service features work properly.

### Before you begin

You must have the following information available for each storage system you want to associate:

- IP address or name
- Login and NDMP credentials
- Access protocol (HTTP or HTTPS)

### About this task

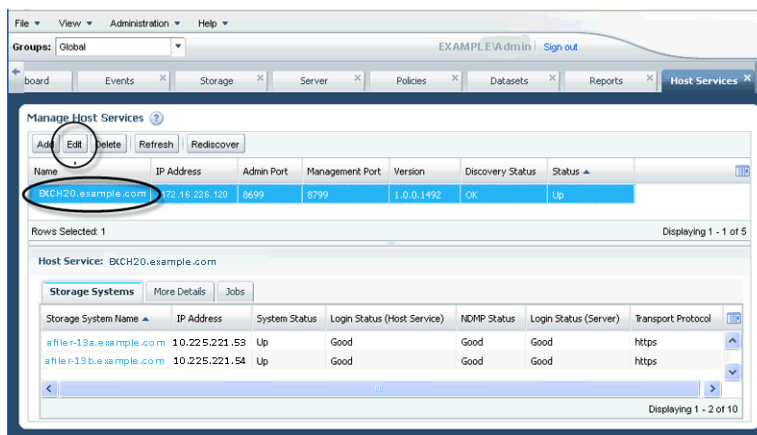
In a VMware environment, if the storage system that you add uses HTTP but has SSL enabled, then the host service uses HTTPS to communicate with the storage system. If the storage system that you add uses HTTP and does not have SSL enabled, then the host service uses HTTP to communicate with the storage system.

### Steps

1. From the **Administration** menu, select **Host Services**.
2. In the host services list, select the host service with which you want to associate storage.

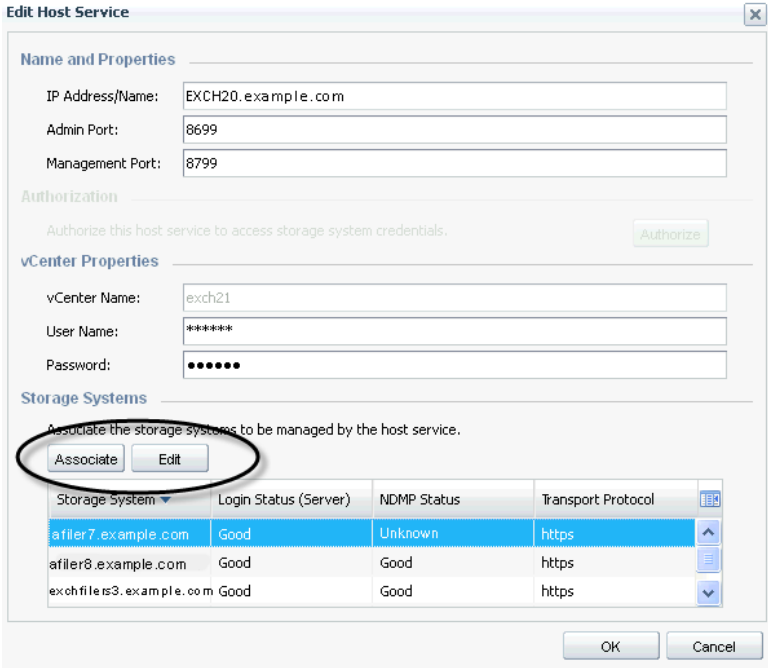
In the Storage Systems subtab is a list of storage systems currently associated with the host service you selected.

3. Click **Edit** to associate a new storage system.



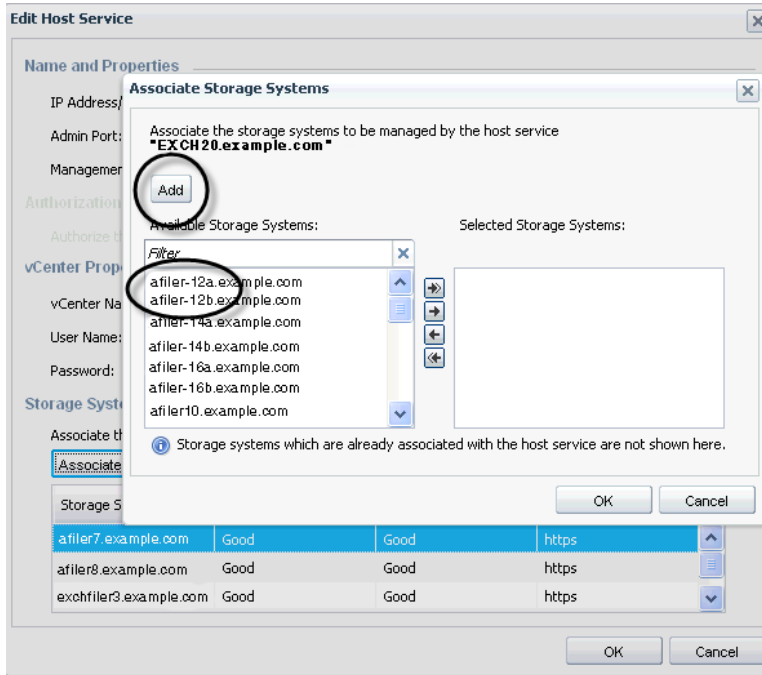
The Edit Host Service dialog box opens.

4. In the Storage Systems area, click **Associate**.



5. Choose one of the following ways to associate the storage systems with the host service:

- To associate storage systems shown in the Available Storage Systems list, select the system names and click **OK**.
- To associate a storage system not listed in Available Storage Systems, click **Add**, enter the required information, and click **OK**.



The newly associated storage system displays in the Storage Systems area.

6. In the list of storage systems, verify that the status is Good for the login and NDMP credentials for each storage system.

### After you finish

If the login or NDMP status is other than Good for any storage system, you must edit the storage system properties to provide the correct credentials before you can use that storage system.

After you finish editing the host service properties, you can view job progress from the Jobs subtab on the Manage Host Services window and you can view details about each job from the Jobs tab.

## Editing storage system login and NDMP credentials from the Host Services tab (7-Mode environments only)

You must provide valid login and NDMP credentials for storage systems so that the DataFabric Manager server can access them. If the server cannot access the storage, your backups might fail.

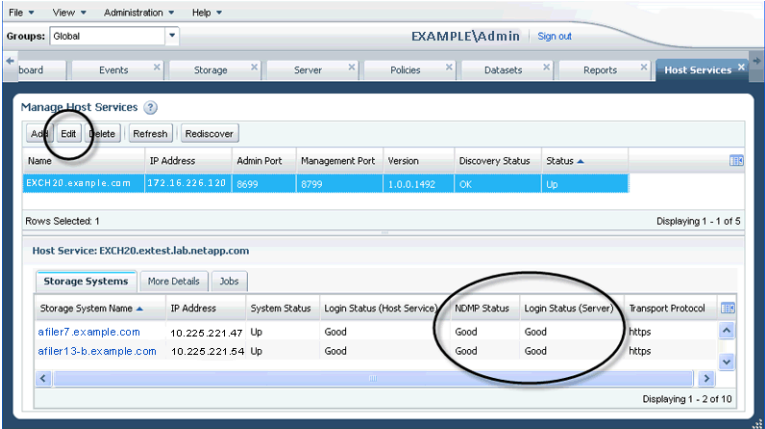
### Before you begin

Have the following storage system information available:

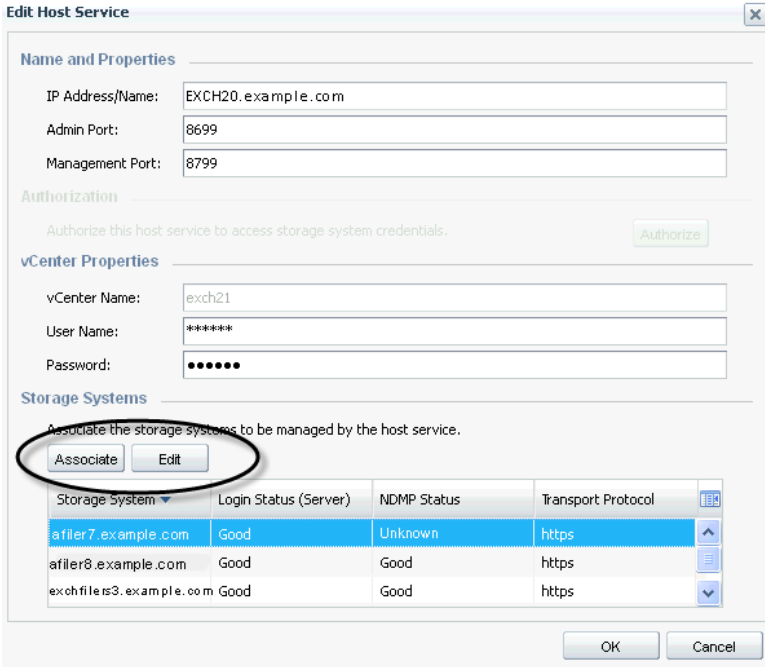
- IP address or name
- Login and NDMP credentials
- Access protocol (HTTP or HTTPS)

**Steps**

- 1. From the Administration menu, select **Host Services**.
- 2. In the host services list, select a host service.  
The storage systems associated with the selected host service display in the Host Services tab.
- 3. In the **Host Services** tab, select a storage system with a login or an NDMP status of Bad or Unknown.



- 4. Click **Edit**.
- 5. In the **Edit Host Service** dialog box, click **Edit**.



6. Enter the appropriate login and NDMP credentials and click **OK**.
7. In the **Host Services** tab, verify that the Login Status and NDMP Status are Good.
8. Click **OK**.

The storage system status columns in the Host Services tab display the new status.

#### **After you finish**

After you finish editing the storage system properties, you can view job progress from the Jobs subtab on the Manage Host Services window and you can view details about each job from the Jobs tab.

## **Determining whether a storage system belongs to a workgroup or a domain**

The storage system that you use for the OnCommand Unified Manager Core or Host Package installation must belong to a domain rather than a workgroup. Prior to installing the Core or Host Packages, you must determine if the system belongs to a workgroup or a domain.

#### **Step**

1. Right-click **My Computer** and click **Properties** and the **Computer Name** tab.

For details, see the documentation for your Windows operating system.

The Computer Name tab displays either a Workgroup label or a Domain label.

## Certificate-based authentication

---

Connecting DataFabric Manager server to a virtual or cloud infrastructure network using certificate-based authentication means that authentication occurs using an SSL certificate. Using the certificate makes the requirement for user names or passwords unnecessary.

Certificate-based authentication occurs when a client, such as the host service or cloud orchestration tool, connects to the DataFabric Manager server with a Web service or ZAPI request. The client presents a self-signed certificate to DataFabric Manager server. In turn, DataFabric Manager server accepts the certificate, validates the certificate, and processes the request if it authenticates the client.

### Certificate information

An SSL certificate is a digital document whose legitimacy is signed off by its creator. The certificate is used to verify that a key belongs to an individual or organization.

When you install DataFabric Manager server or the host service, the truststore contains no certificates to trust. You must add client certificates to the truststore before DataFabric Manager server will trust those client connections.

By default, the DataFabric Manager server installs the DataFabric Manager server key and certificate pair, and any trusted certificates in a repository called the DataFabric Manager server truststore

When DataFabric Manager server is installed, it is configured to not trust any public certificate authorities (CAs). If you want DataFabric Manager server to trust clients with certificates signed by a public CA, you must add the root CA certificate to the truststore.

Certificates are identified in the Windows Trusted Root Certification Authorities store with the following titles in the Issued To and Issued By columns:

- DataFabric Manager - VIM
- DFM Host Services for VIM
- DFM Plug-in for VIM

### Managing certificates for cloud service clients

You can manage certificates on your DataFabric Manager server for clients in a cloud infrastructure network, including generating a key and a self-signed certificate, adding certificates to a truststore,

listing all certificates in a truststore, displaying details of certificates in a truststore, removing a certificate from a truststore, and disabling certificate-based authentication.

## Generating a key and self-signed certificate

You can generate a key and certificate pair by using the `dfm ssl service setup` command.

### Steps

1. On DataFabric Manager server, open a console session.
2. Enter the following command:

```
dfm ssl service setup -f
```

The `-f` option causes the command to overwrite existing key and certificate pairs.

3. To force DataFabric Manager server to immediately use the newly generated key, enter the following command:

```
dfm ssl service reload
```

## Adding a certificate in the truststore

You can add a certificate in the DataFabric Manager server truststore for clients in a cloud infrastructure network by using the `dfm ssl service truststore add` command.

### Before you begin

The certificate must be in privacy-enhanced mail (PEM) format.

### Step

1. On the DataFabric Manager server console, enter the following command:

```
dfm ssl service truststore add -f cacert.pem
```

The `-f` option adds the certificate without prompting you for permission.

## Removing a certificate from the truststore

You can remove a cloud service client certificate from the DataFabric Manager server truststore by using the `dfm ssl service truststore remove` command.

### Step

1. On the DataFabric Manager server console, enter the following command:

```
dfm ssl service truststore remove certificate_number
```

## Displaying the list of certificates in a truststore

You can use the DataFabric Manager server command-line interface to display a list of all the certificates in a truststore. You might want to do this to determine how long a certificate is valid, to



find information about the certificate's issuer, or to find the certificate number assigned to a specific certificate.

### Step

1. On the DataFabric Manager server console, enter the following command:

```
dfm ssl service truststore list
```

## Displaying details about certificates in a truststore

You can display the details about one or more certificates in a truststore, including details about the certificate serial number, signature algorithm, issuer, valid from and valid to dates, and public key algorithm.

### Steps

1. On the DataFabric Manager server, open a console session.
2. Enter the following command:

```
dfm ssl service truststore detail certificate number
```

*certificate number* displays details about a specific certificate in the truststore.

You can use the `dfm ssl service truststore list` command to find the certificate numbers.

## Displaying the contents of the DataFabric Manager server key and certificate file

You can display the contents of a key and certificate file, including the expiry date of the certificate, and verify whether the certificate is generated correctly by using the DataFabric Manager server command-line interface. The key and certificate file contents are displayed in hexadecimal format.

### Step

1. On the DataFabric Manager server console, enter the following command:

```
dfm ssl service show -c -k -f -o output
```

`-c` selects the certificate for printing.

`-k` selects the key for printing.

`-o` saves the information to a file.

`-f` overwrites the file without prompting.

## Displaying DataFabric Manager server certificate details

You can display the DataFabric Manager server certificate details, including the certificate serial number, valid to and valid from dates, and signature algorithm.

### Before you begin

The system date and time must be correct on the system where DataFabric Manager server is installed; otherwise, the Not Before and Not After dates might be displayed incorrectly in the command output.

### Steps

1. On the DataFabric Manager server, open a console session.
2. Enter the following command:

```
dfm ssl service detail -f -o outputfile
```

`-f` overwrites the file without prompting.

`-o` saves the information to a file.

## Disabling certificate-based authentication

The DataFabric Manager server uses certificate-based authentication by default to authenticate clients in a cloud infrastructure network. You can disable this feature so that clients cannot use a root certificate to connect to the DataFabric Manager server. You might want to disable certificate-based authentication when a certificate is expiring or you are replacing a certificate.

### Steps

1. On the DataFabric Manager server console, open the command-line interface.
2. Enter the following command:

```
dfm option set serverCertAuthEnabled=No
```

## Managing certificates for host services clients

You can manage certificates for host services clients on your DataFabric Manager server, including registering certificates, authorizing certificates, unregistering certificates, and displaying certificate information for a specific host service.

### Authorizing a host service certificate

When you register a new host service with DataFabric Manager server, you must manually authorize the authentication certificate so that requests from the host service to DataFabric Manager server are successful.

#### Steps

1. Enter the following command from a DataFabric Manager server console session:

```
dfm hs list
```

The host requesting authorization is listed with the status "Authorization Pending".

2. Record the ID number of the host requiring authorization.

The host ID is located in the first column of the list output.

3. Using the ID number you recorded in Step 2, enter the following command:

```
dfm hs authorize ID number
```

You are asked whether you authorize the host service to use this DataFabric Manager server.

4. Enter *y* to authorize the host service certificate.

## Migrating certificates, keys, and truststores manually

During DataFabric Manager server database backups, the directories containing certificates, keys, and truststores for both cloud service clients and host service clients are not backed up. If you want to restore database backups to a different DataFabric Manager server, you must manually migrate the certificates, keys, and truststore directories or the restore fails.

#### About this task

This procedure is not required when you back up and restore the database to the same DataFabric Manager server.

#### Steps

1. On the DataFabric Manager server you want to migrate, back up the database.

2. On the DataFabric Manager server you just backed up, copy the following three folders from the `\DataFabric Manager install directory\conf\keys\` directory:
  - `certs`
  - `private_keys`
  - `truststore`
3. Restore the database to the new DataFabric Manager server.
4. Copy the three folders from the original DataFabric Manager server to the same directory on the destination DataFabric Manager server.
5. Perform one of the following actions, depending on which type of clients you are migrating:
  - If you migrate clients in a cloud infrastructure, after the migration, generate a new DataFabric Manager server certificate on the destination DataFabric Manager server by entering `dfm ssl service setup`, and then load the new certificate by entering `dfm ssl service reload`

**Note:** If you do not generate a new certificate, the new DataFabric Manager server will load the certificate that was migrated from the original DataFabric Manager server causing DataFabric Manager server hostname validation to fail on cloud service clients.
  - If you are migrating host service clients, after the migration, unregister the host service and then register the new host service from the Host Services tab in the OnCommand console.

### Related tasks

[Verifying that a host service is registered with the DataFabric Manager server \(7-Mode environments only\)](#) on page 60

You must properly register a host service with a DataFabric Manager server before the server can discover objects and before you can perform a backup in a virtual environment.

# Enabling secure communication between the DataFabric Manager server and Data ONTAP

---

You should configure the storage system running Data ONTAP and the DataFabric Manager server to enable secure communication.

## Before you begin

- You must have enabled secure communication on the storage system running Data ONTAP by using OnCommand System Manager or the Data ONTAP command-line interface.
- You must have enabled SNMPv3 on the storage system running Data ONTAP and on the DataFabric Manager server.

For more information about enabling SNMP, see the *Data ONTAP Network Management Guide* and the *OnCommand Unified Manager Operations Manager Administration Guide*.

## Steps

1. Initialize the DataFabric Manager server private key and generate a self-signed certificate by running the following command and following the prompt:

```
dfm ssl server setup -f
```

2. Restart the HTTP service by running the following commands:

```
dfm service stop http
```

```
dfm service start http
```

3. Enable HTTPS by running the following command:

```
dfm option set httpsEnabled=Yes
```

4. Request for a signed certificate from a well-known CA by running the following command:

```
dfm ssl server req -f -o server.csr
```

The `server.csr` file should be signed by a CA.

5. Import the signed certificate to the DataFabric Manager server by running the following command:

```
dfm ssl server import server.crt
```

6. Restart the HTTP service by running the following commands:

```
dfm service stop http
```

```
dfm service start http
```

7. Enter the certificate information for a CA setup by running the following command and following the prompt:

```
dfm ssl self setup -f
```

The CA is ready to sign requests.

8. If the DataFabric Manager server is running a private CA, perform the following steps:

- a) Run the following command to allow certificate signing requests:

```
dfm ssl self sign -f -o server.crt server.csr
```

- b) Import the signed certificate to the DataFabric Manager server by running the following command:

```
dfm ssl server import server.crt
```

9. Change the communication options by running the following commands:

```
dfm service stop http
```

```
dfm option set httpsEnabled=yes
```

```
dfm option set httpEnabled=no
```

```
dfm option set httpsPort=8443
```

```
dfm option set hostLoginProtocol=ssh
```

```
dfm option set hostAdminTransport=https
```

```
dfm option set perfAdvisorTransport=httpsOk
```

```
dfm service start http
```

10. Verify that secure communication is enabled with the host by running the command:

```
dfm host diag hostID_or_hostIP
```

You should be able to connect to the OnCommand console by using the following URL: `https://DataFabric_Manager_server_IP_or_hostname:httpsPort/`

## Related information

*IBM N series support website: [www.ibm.com/storage/support/nseries](http://www.ibm.com/storage/support/nseries)*

# Upgrading to OnCommand Unified Manager Core and Host Packages

---

You can upgrade to OnCommand Unified Manager Core or Host Packages to use the monitoring tools and dashboards of the OnCommand console.

If you are upgrading on a Windows 64-bit server, from DataFabric Manager server 4.x to OnCommand Unified Manager Core Package 5.0 or later, you must back up the DataFabric Manager server 4.x database before the upgrade. When you restore the database after the upgrade, the installation directory `C:\Program Files\IBM\DataFabric Manager\DFM\` is chosen based on the 64-bit Core Package.

**Note:** If you do not back up before upgrading, the installer chooses the `Program Files (x86)` directory, which is the location for 32-bit applications.

## Related references

[License requirements for data protection](#) on page 26

## Changes that affect upgrade to OnCommand Unified Manager Core Package

While planning your upgrade to OnCommand Unified Manager Core Package 5.2, you must consider the changes in the product that affect the upgrade, such as changes to the database. Also, OnCommand Unified Manager Core Package 5.1 or later requires two separate DataFabric Manager servers to monitor and manage 7-Mode and cluster objects.

### Upgrade changes in OnCommand Unified Manager Core Package 5.2

Upgrade to OnCommand Unified Manager Core Package 5.2 might take a long time to complete because the following processes are included during the upgrade:

- Validating the DataFabric Manager server database
- Removing the storage objects that are marked-deleted in the database and the associated entries in the history tables

Some storage objects might be manually or automatically deleted from a controller monitored by the DataFabric Manager server. Such objects are marked-deleted on the DataFabric Manager server database, but are not removed from the database.

- Removing events older than 180 days from the day of installation, or as specified in the `eventsPurgeInterval` option

**Attention:** If the database validation fails, the upgrade fails. You must contact technical support if the upgrade fails.

You can run the DFM Deleted Object Purge Tool before upgrading to determine an approximate time required for the upgrade. This tool can determine the additional upgrade time required due to the cleaning of marked deleted objects. You must install the tool by downloading it from the N series support website (accessed and navigated as described in [Websites](#) on page 10).

**Note:** You should check the `monitor.db` file size and allocate approximately 15 minutes for each gigabyte of data.

### **Upgrade from OnCommand Unified Manager Core Package 5.1 to OnCommand Unified Manager Core Package 5.2**

Upgrade from OnCommand Unified Manager Core Package 5.1 to OnCommand Unified Manager Core Package 5.2 takes a long time to complete because of the following change in the upgrade process:

- Cleaning and validation of the DataFabric Manager server database in Core Package 5.2

### **Upgrading from DataFabric Manager 3.x to OnCommand Unified Manager Core Package 5.2**

Upgrade from DataFabric Manager 3.x to OnCommand Unified Manager Core Package 5.2 takes time to complete due to the following changes in the product:

- Cleaning and validation of the DataFabric Manager server database in Core Package 5.2
- Deleting of unwanted storage objects in Core Package 5.1, if you are monitoring and managing controllers running Data ONTAP 7-Mode and clustered Data ONTAP

In OnCommand Unified Manager Core Package 5.1 or later, you must have two separate DataFabric Manager servers to monitor and manage controllers running Data ONTAP operating in 7-Mode and clustered Data ONTAP. An upgrade to the clustered environment deletes all the 7-Mode controllers. Similarly, an upgrade to the 7-Mode environment deletes all the cluster controllers.

**Note:** This is applicable during an upgrade or restore to Core Package 5.1.

- Changes in the Performance Advisor file format in DataFabric Manager server 4.0  
This is applicable if you use Performance Advisor. The delay in upgrade occurs because the Performance Advisor data is read and rewritten in the new file format.

#### **Related concepts**

[Upgrade issues with DataFabric Manager 3.8 or earlier](#) on page 88

#### **Related information**

[IBM N series support website: www.ibm.com/storage/support/nseries](http://www.ibm.com/storage/support/nseries)



## Upgrading OnCommand Unified Manager Core Package on Windows

You can upgrade to the Express edition in Data ONTAP operating in 7-Mode environments or to the Standard edition by installing OnCommand Unified Manager Core Package.

### Before you begin

- You must have administrator privileges for the Windows computer on which you are installing the Core Package.
- If you are upgrading from the Express edition of OnCommand Unified Manager Core Package to clustered Data ONTAP, you must have first upgraded to OnCommand Unified Manager Core Package 5.0 and installed the Standard edition.  
The Express edition is not supported in clustered environments.
- You must have downloaded the setup file.
- You must have the following items:
  - Credentials for network access
  - The IP address of the server on which you are installing the software
  - Directory path where you want to install, if different from the default location

If you are upgrading to OnCommand Unified Manager Core Package while also migrating to a new system, you should use the original DataFabric Manager server installation path to avoid errors caused by changes to the path setting option for DataFabric Manager server databases.

For example, if the original installation path is `C:\Program Files (x86)\IBM\DataFabric Manager`, you should use that path and not the new default path `C:\Program Files\IBM\DataFabric Manager`.

### About this task

The installation software automatically detects and stops any DataFabric Manager server services that are running on the system.

You should perform a backup of the database. If you do not perform a backup, your data is not archived.

### Steps

1. Start the Core Package installation wizard by running the appropriate setup file.
2. Review and accept the license and AutoSupport agreements.

You cannot install the Core Package unless you accept the license agreement.

3. Select the Data ONTAP environment: 7-Mode or Cluster-Mode.

**Note:** If you are upgrading using the Express edition, this prompt is not displayed.

4. When prompted, confirm if you want to back up the database.  
Backing up the database can take several minutes to many hours, depending on the size of your database.
5. Review the summary screen and consider whether you want to make changes before completing the installation, and then click **Install**.
6. When the **Installation Complete** screen is displayed, click **Next** to continue.
7. Click **Finish** to close the wizard.

#### After you finish

- When you finish installing the Core Package, you can install the Host Package and use the configuration wizard to configure a host service.
- You should clear the browser cache before you first start the OnCommand console and when you upgrade to a new version of the software.

#### Related tasks

[Downloading OnCommand Unified Manager Core Package](#) on page 37

[Installing OnCommand Unified Manager Core Package on Windows](#) on page 38

[Determining whether a storage system belongs to a workgroup or a domain](#) on page 70

## Upgrading OnCommand Unified Manager Core Package on Linux

You can upgrade to the Express edition in Data ONTAP operating in 7-Mode environments or to the Standard edition by installing OnCommand Unified Manager Core Package.

#### Before you begin

- If you have a large database, you must have backed up the database before starting the setup wizard.
- You must have root user privileges for the Linux system on which you are installing OnCommand Unified Manager Core Package.
- If you are upgrading from the Express edition of OnCommand Unified Manager to clustered Data ONTAP, you must have upgraded to OnCommand Unified Manager Core Package 5.0 and installed the Standard edition.  
The Express edition is not supported in clustered environments.
- You must have downloaded the setup file.
- You must have the following items:
  - Credentials for network access

- The IP address of the server on which you are installing the software
- Directory path where you want to install, if different from the default location

### About this task

The installation software automatically detects and stops any DataFabric Manager server services that are running on the system.

You should perform a backup of the database. If you do not perform a backup, your data is not archived.

### Steps

1. Start the Core Package installation wizard by running the appropriate setup file.
2. Follow the prompts and select the Data ONTAP environment: 7-Mode or Cluster-Mode.

**Note:** If you are upgrading the Express edition, this prompt is not displayed.

3. Continue responding to the prompts.

When the URL for opening the OnCommand console is displayed, the upgrade is complete.

4. Copy and paste the URL to a browser to open the OnCommand console.

### Related tasks

[Downloading OnCommand Unified Manager Core Package](#) on page 37

[Installing OnCommand Unified Manager Core Package on Linux](#) on page 40

## Upgrading from Core Package 32-bit to Core Package 64-bit

OnCommand Unified Manager Core Package 5.2 does not support installation on a 32-bit server. Before you upgrade to Core Package 5.2 in your Windows or Linux server, you must back up and restore your 32-bit DataFabric Manager server database.

### Before you begin

- The installation directory must have twice the space of the backup data.  
The restore operation creates a temporary copy of the backup data and therefore the installation directory should have enough space.
- The new DataFabric Manager server must be on the same subnet as the old DataFabric Manager server.

### Steps

1. Create a backup of the 32-bit DataFabric Manager server database by running the following command:

```
dfm backup create backup_filename
```

2. Install the OnCommand Unified Manager Core Package 5.2 on your 64-bit server.
3. Copy the 32-bit database backup to the 64-bit server.
4. Restore the 32-bit database backup on the 64-bit server by running the following command:

```
dfm backup restore backup_filename
```

5. Run the following command to view the old paths for the setup options:

```
dfm options list setup_option_name
```

You should check the path for the following setup options: `databaseBackupDir`, `dataExportDir`, `dfmencKeysDir`, `perfArchiveDir`, `perfExportDir`, `pluginsDir`, `reportDesignPath`, `reportsArchiveDir`, and `scriptDir`.

### Example

- Run the following command:

```
dfm options list dataExportDir
```

Result: The command displays the path in which the `dataExportDir` data is located:

```
installation_directory/data/ in Windows and /opt/IBMd fm/data/ in Linux.
```

6. Copy the data for each option to the new 64-bit install directory.

### Example

Copy the data from the `installation_directory/data/` location to the new installation directory in Windows.

Alternatively, copy the data from the `/opt/IBMd fm/data/` location to the new installation directory in Linux.

7. Restart the DataFabric Manager server services by running the command:

```
dfm service stop
```

```
dfm service start
```

### Related tasks

[Installing OnCommand Unified Manager Core Package on Windows](#) on page 38

[Installing OnCommand Unified Manager Core Package on Linux](#) on page 40

## Upgrading Core Package to manage 7-Mode and clustered Data ONTAP environments

You can install two separate instances of OnCommand Unified Manager Core Package and migrate data from earlier versions of DataFabric Manager server to enable management of both 7-Mode and

clustered Data ONTAP environments. OnCommand Unified Manager does not support management of both 7-Mode and clustered environments from the same server.

### Before you begin

You must have two DataFabric Manager server license keys, one for each server instance.

You must back up your existing database before you upgrade.

### Steps

1. Download and install OnCommand Unified Manager Core Package.
2. When you are prompted, choose 7-Mode as your environment, and complete the installation.
3. On a second server, perform a new installation of OnCommand Unified Manager Core Package, choosing the clustered environment.
4. On the second server, restore the database that you backed up before the upgrade.

A warning message is displayed that all 7-Mode data will be deleted.

5. Disable the license key on the second server by entering the following command at the CLI:

```
dfm license disable all
```

After the restore, the two DataFabric Manager server installations share the same license key; therefore, you must disable one license to avoid conflicts.

6. Add a new license key to the second server by entering the following command:

```
dfm license install NewLicenseKey
```

7. Verify that the new license key is installed by entering the following command:

```
dfm license list
```

The second server installation is complete.

### Related tasks

[Downloading OnCommand Unified Manager Core Package](#) on page 37

[Installing OnCommand Unified Manager Core Package on Windows](#) on page 38

[Installing OnCommand Unified Manager Core Package on Linux](#) on page 40

## Prerequisites for upgrading the Host Package

You must ensure that you meet all the requirements before you begin upgrading the Host Package.

- You must be a member of the local administrators group on the system on which the Host Package is installed.
- The system that you use for your Host Package installation must belong to a domain rather than a workgroup.

- You must be a member of the local administrators group or a domain user on the vCenter server.
- You must have administrator privileges for the Windows computer on which you are installing the Host Package.
- The DNS name of the Windows computer on which you are installing the Host Package must match the actual computer name, and the computer name must not be more than 15 characters.
- The `smvi.override` file from the previous installation directory must be backed up if you are upgrading from Virtual Storage Console 2.0 to OnCommand Unified Manager Core Package.
- The Windows firewall must be set to allow exceptions.
- The Server Manager administrative tool on Windows 2008 or Windows 2008 R2 systems must be stopped.
- You must have installed at least PowerShell 1.0.  
PowerShell 2.0 is recommended.
  - On Windows Server 2008 R2, PowerShell is installed by default and you do not have to enable it on the server.
  - On Windows Server 2008, PowerShell is not installed by default and you must enable it on the server after it is installed.  
To enable PowerShell, you must follow the instructions in the pop-up dialog box that appears during upgrade.
- Any service or process that is using the same Java Runtime Environment (JRE) that is installed with the Host Package must be stopped.
- You must have the following items available:
  - A Windows system account user name and password
  - A Host Package installation location, if not the default
  - The IP address, user name, and password of the DataFabric Manager server
  - The IP address, user name, and password of the vCenter Server
- Each vCenter server instance must be a dedicated Windows server.  
If other applications are installed on the same server, they can consume valuable system resources and might drastically reduce performance.

## Upgrading to OnCommand Unified Manager Host Package

You can upgrade to OnCommand Unified Manager Host Package from a previous version of SnapManager for Virtual Infrastructure to enable the DataFabric Manager server to use a host service to discover and monitor virtual objects such as virtual machines or datastores for the Backup and Recovery capability.

### About this task

If you are installing the Host and Core Packages on the same system, a fully qualified domain name must be used for the Core Package, instead of *localhost*.

The installer creates a locks directory, which is used to coordinate access to resources in the vSphere Client. The locks directory is located within the OnCommand Unified Manager directory. You must not change the name or the location of this directory.

The IP address and host name for the system on which you are installing the Host Package must have a DNS registration that resolves properly between the host service and the DataFabric Manager server.

**Note:** If the installer fails during the installation of the Host Package, it might not revert the system to its original state. You must manually remove the Host Package using the Control Panel application for your operating system and then delete the folder where the Host Package was installed.

### Steps

1. Start the Host Package installation wizard by running the setup file.
2. Click **Next** to accept the default installation location, or click **Change** to enter a different location.
3. On the **Service Credentials** page, type the user name and password for the system on which you are installing the Host Package.

You must type the user name in the following format:

*domain name\user name*

4. On the **Configure Communication Ports** page, type the port numbers that you want to use or accept the default port numbers.  
If you use custom firewalls, ensure that the Core and Host Packages use the same port numbers.
5. On the **Configure DataFabric Manager server** page, type the IP address and the user name and password used to access DataFabric Manager server.  
If you want to monitor your virtual environment or use the Backup and Recovery capability, you must type the credentials for the DataFabric Manager server. You can skip the validation of the DataFabric Manager server if you do not have the server credentials available.
6. On the **Plug-in Service and vCenter Server Information** page, provide the following information:
  - a) Type the admin IP address of the system on which you are installing the Host Package.
  - b) Type the host name or IP address of the system on which the vCenter Server is installed and the user name and password that enables the vSphere Client to communicate with the vCenter Server.
7. Click **Install** on the summary page, and then click **Finish**.

### After you finish

- During the installation process, the installer creates some temporary folders that are automatically deleted when you next reboot the system.

If you want to delete these folders, you can do so without adversely affecting the installation of the Host Package.

- The host service must be configured to perform backups.

### Related tasks

[Downloading the OnCommand Unified Manager Host Package](#) on page 48

[Installing OnCommand Unified Manager Host Package](#) on page 49

[Determining whether a storage system belongs to a workgroup or a domain](#) on page 70

[Setting the port number manually](#) on page 88

### Related references

[Designated ports for the OnCommand Unified Manager Host Package](#) on page 35

## Setting the port number manually

If you have changed the port number of the host service during the upgrade of the Host Package, the host service status displayed as Down, because it stops communicating with the DataFabric Manager server. You must manually set the port numbers to restart the host services.

### Steps

1. Set the new administration port by running the following command:

```
dfm hs set hsAdminPort=new-admin-port
```

2. Set the management port by running the following command:

```
dfm hs set hsMgmtPort=new-mgmt-port
```

3. Verify that the communication between the DataFabric Manager server and the host service is established by running the following command:

```
dfm hs diag
```

## Upgrade issues with DataFabric Manager 3.8 or earlier

You can upgrade to OnCommand management software from previous versions of the DataFabric Manager server. However, due to changes in system behavior between releases, you might have to resolve issues before upgrading.

The following issues are associated with upgrading to OnCommand Unified Manager Core Package 5.1 from DataFabric Manager 3.8 and earlier. Issues associated with upgrading from DataFabric Manager server 4.0 or later to OnCommand Unified Manager Core Package are covered in the requirements and installation instructions throughout this guide and in the *OnCommand Unified Manager Core Package Release Notes*.



**Supported methods to upgrade from Solaris to Windows or Linux**

DataFabric Manager 3.8 and later does not support Solaris. Therefore, you must migrate the DataFabric Manager server database on Solaris to a server running Windows or Linux before you upgrade to DataFabric Manager 3.8 or later.

You can migrate the database by creating an archive copy of the backup by using the `dfm backup create <backup_filename>` command, then restore the database by using the `dfm backup restore <backup_filename>` command.

**Upgrade path from DataFabric Manager 3.5 to OnCommand Unified Manager Core Package 5.x**

You can upgrade to OnCommand Unified Manager Core Package 5.x from DataFabric Manager server 4.0 or later. If you want to upgrade from DataFabric Manager server 3.5 to OnCommand Unified Manager Core Package 5.x, you must first upgrade to DataFabric Manager server 4.0.

**Upgrading from DataFabric Manager 3.7.1**

If you have created custom reports with GUILink and SecureGUIlink as fields in DataFabric Manager 3.7.1 or earlier, upgrading to DataFabric Manager 3.8 or later causes the `dfm report view` command to fail. You must open the custom report in Operations Manager console and save the report to view it.

**Upgrading from DataFabric Manager 3.7 on Linux**

If you are upgrading from DataFabric Manager 3.7 to DataFabric Manager 3.8 or later on Linux, the upgrade might fail with the following notification:

```
rpm: /opt/IBMdfm/lib/libgcc_s.so.1: version `GCC_4.2.0' not found (required
by /usr/lib/libstdc++.so.6)
```

You can resolve this issue by deleting the entry `/opt/IBMdfm/lib` from the environment variable `LD_LIBRARY_PATH`.

**Upgrading from DataFabric Manager 3.7 or earlier**

If you are upgrading from DataFabric Manager 3.7 or earlier to DataFabric Manager 3.8 or later, you must delete the existing Data Source Name (DSN) entry for the Adaptive Server Anywhere 9.0 driver and create a new DSN entry for SQL Anywhere 10.

**Upgrading from DataFabric Manager 3.5 or earlier**

If you are upgrading from DataFabric Manager 3.5 or earlier to DataFabric Manager 3.6 or later, it takes a long time to upgrade the performance data files (data of 20 GB or more). The length of time depends on the platform used. The space used by the performance data files increases by about 65% during the upgrade.

### Upgrading from DataFabric Manager 3.2 or earlier

Because of database schema changes, you might experience a delay of several minutes to a few hours when upgrading from DataFabric Manager 3.2 or earlier.

The time required to perform the upgrade depends on the size of the database, the amount of history in the database, the CPU speed, and the I/O throughput of the system. The following processes might require a lot of time:

- Merging rotating history tables
- Populating history tables
- Populating volume history tables
- Populating aggregate history tables
- Reloading the database into the latest file format (at the end of upgrade)

### Upgrading from DataFabric Manager 2.1 or earlier, on Windows

Because of a database upgrade that is no longer supported on a Windows platform, you must first upgrade to DataFabric Manager 2.2 or later (up to DataFabric Manager 3.2) before you upgrade to DataFabric Manager 4.0.

### Windows installation path when upgrading to DataFabric Manager 3.6 or later

Following are the default installation paths for various software versions:

- DataFabric Manager 3.8 through 4.0.1 on Windows  
32-bit platform: C:\Program Files\IBM\DataFabric Manager  
64-bit platform: C:\Program Files (x86)\IBM\DataFabric Manager
- DataFabric Manager 3.6 or later (up to 3.7.1):  
C:\Program Files\IBM\DataFabric
- Versions earlier than DataFabric Manager 3.6:  
C:\Program Files\IBM\DataFabric

### Installing OnCommand Unified Manager Core Package in a custom Linux directory

If you used the `-d <new directory>` command to install DataFabric Manager 3.2 or earlier in a custom directory, the software was installed in an IBMdfm directory that was automatically created within the new directory you specified.

If you use the `-d <new directory>` command to install DataFabric Manager 3.3 or later in a custom directory, the software is installed in the new directory you specify; no additional IBMdfm directory is created.

### Viewing dynamic data

To use Disaster Recovery, the browser that you use to view Operations Manager console must support Java applets.

**Conversion of group names from DataFabric Manager 3.1 or earlier**

The naming convention for hierarchical groups uses the forward slash character (/) as a separator between levels in the hierarchy. If you upgrade from DataFabric Manager 3.1 or earlier, any group that uses the forward slash character in its name is renamed so that the group is not mistaken for a subgroup in a hierarchy.

Each forward slash character is replaced by a hyphen character (-). If the new name is already in use by another group, OnCommand Unified Manager adds an increasing numeric suffix to the name until an unused name is derived. For example, OnCommand Unified Manager would try to rename group apple/orange to appleorange, then to apple-orange1, then to apple-orange2, and so on, until an unused group name is found.

**Upgrade considerations for configuration groups**

After upgrading from DataFabric Manager 3.1 or earlier, some administrators of configuration resource groups might gain additional privileges through inheritance. Before upgrading, review the privileges for group hierarchies that include configuration resource groups and make adjustments as necessary.

# Uninstalling the OnCommand Unified Manager Core and Host Packages

---

If you are no longer using the package or need additional space, it might be necessary to uninstall and remove packages. When you uninstall the OnCommand Unified Manager Core or Host Package from your system, the installer automatically removes all components.

## Uninstalling the OnCommand Unified Manager Core Package from Windows

You can uninstall the OnCommand Unified Manager Core Package, for instance, when a Core Package installation is unsuccessful, or when you want to reconfigure your system with a fresh installation. You uninstall the Core Package using the Control Panel application for your operating system.

### Before you begin

You must have ensured that there are no other dependencies on the Core Package, because the wizard uninstalls all associated components.

### Steps

1. On the Windows server where you installed the Core Package, navigate to the Windows Control Panel and **Control Panel > Programs and Features**.

For details, see the documentation for your Windows operating system.

2. Scroll through the list of installed programs to find the program that you want to remove.
3. Click the program that you want to uninstall, and then click **Uninstall/Change** or **Change/Remove**, depending on your operating system.

The IBM N series install wizard opens.

4. Select **Remove**, and then click **Next**.
5. Click **Uninstall**.
6. If requested, reboot the system.

A system reboot is required when, during the uninstall process, the `\DataFabric Manager\DFM` program directory is not moved to a new directory. The new directory is created with a name that indicates the date and time that you performed the uninstall process: for example, `\DataFabricManager\DFM-20110622140520\`, which specifies that the OnCommand Unified Manager Core Package was uninstalled on June 22, 2011, at 2:05:20 PM. When this

uninstall directory is not created, you must reboot to complete the uninstall process and newly install the OnCommand Unified Manager Core Package.

#### Related tasks

[Installing OnCommand Unified Manager Core Package on Windows](#) on page 38

## Uninstalling the OnCommand Unified Manager Core Package from Linux

You can use the command `rpm -e` to uninstall the OnCommand Unified Manager Core Package from Linux, for instance, when a Core Package installation is unsuccessful, or when you want to reconfigure your system with a fresh installation.

#### Before you begin

You must have ensured that there are no other dependencies on the Core Package, because the wizard uninstalls all associated components.

#### Step

1. At the command prompt, type the command to uninstall the OnCommand Unified Manager Core Package: for example, `rpm -e IBMdfm`.

The software automatically uninstalls.

#### Related tasks

[Installing OnCommand Unified Manager Core Package on Linux](#) on page 40

## Uninstalling the OnCommand Unified Manager Host Package

You can uninstall the OnCommand Unified Manager Host Package from your system using the Control Panel application for your operating system. When you uninstall the Host Package, the host service does not unregister from the DataFabric Manager server.

#### Before you begin

- You must save any files that contain data such as local backups, scheduled jobs, or datasets. You can find these files in the installation folder. The uninstall process removes all Host Package files.
- You must stop any service or process that is using the same Java Runtime Environment (JRE) that is installed with the Host Package.

### Steps

1. On the Windows server where you installed the Host Package, navigate to the Windows Control Panel and select **Control Panel > Programs and Features**.

For details, see the documentation for your Windows operating system.

2. Scroll through the list of installed programs to find the program that you want to remove.
3. Click once on the program you want to uninstall and then click **Uninstall/Change** or **Change/Remove**, depending on your operating system.

You can also double-click the program name and Windows will uninstall OnCommand Unified Manager Host Package by default.

This will open a prompt asking you to confirm you want to uninstall OnCommand Unified Manager Host Package.

4. Click **Yes** to continue uninstalling OnCommand Unified Manager Host Package.

### Result

OnCommand Unified Manager Host Package will uninstall without any additional prompts.

### After you finish

- When you finish uninstalling the Host Package, you might need to manually close the port used for OnCommand Unified Manager Host Service Management.
- You must disable all the ports opened by the installer for all profiles as appropriate for your operating system.

### Related tasks

[Installing OnCommand Unified Manager Host Package](#) on page 49

[Upgrading to OnCommand Unified Manager Host Package](#) on page 86

### Related references

[Designated ports for the OnCommand Unified Manager Host Package](#) on page 35

# Troubleshooting OnCommand Unified Manager installation and setup

---

If you encounter unexpected behavior during the installation or when using OnCommand Unified Manager, you can use specific troubleshooting procedures to identify and resolve the cause of such issues.

## Address already in use

<b>Description</b>	This message occurs when the Windows computer has run out of outbound ports. A Transmission Control Protocol (TCP) connection has closed, causing the socket pair associated with the connection to go into a TIME-WAIT state. This prevents other connections from using the TCP protocol, source Internet Protocol (IP) address, destination IP address, source port, and destination port for an unknown period of time.
<b>Corrective action</b>	Reduce the length of the TCP TIME-WAIT delay. See the <a href="#">Microsoft MSDN library</a> for more information.

## There is a problem with this Windows Installer package

<b>Description</b>	This message occurs when you uninstall an application by using the Add or Remove Programs tool in Windows server. The Windows Installer service manages the installation and removal of programs. If there is a problem with the registration of the Microsoft installation engine, you might not be able to remove programs that you have installed by using the Windows installer.
<b>Corrective action</b>	Unregister and reregister the Windows Installer service. See KB891985 on the <a href="#">Microsoft support site</a> for more information.

## Cursor displays in multiple locations in the same dashboard panel

<b>Cause</b>	This problem occurs when you use the Firefox browser to open the OnCommand console.
<b>Corrective action</b>	Disable a browser setting in Firefox, as follows:

1. Open the Firefox browser and click the **Tools** menu, then click **Options**.
2. Click the **Advanced** tab.
3. Clear the Always use the cursor keys to navigate within pages option.
4. Restart the Firefox browser.

## Plug-in container for Firefox has stopped working

**Cause** While installing DataFabric Manager server Express edition, the configuration wizard might crash.

**Corrective action** Update the Adobe Flash Player plug-in.  
See the Mozilla Firefox Help for more information.

### Related information

[Firefox Help](#)

## No related objects are displayed for a virtual object

**Issue** No physical servers corresponding to a virtual object are displayed in the Related Objects list in the Server tab of the OnCommand console.

**Cause** This problem occurs when you add or register a new host service but the mapping between the physical servers and virtual objects does not occur.

**Corrective action**

1. Refresh the monitor by opening a console session and type the following command:  

```
dfm host discover -m share <storage system>
```
2. To view the results, type the following command:  

```
dfm details <storage system>
```
3. Search for the `shareTimestamp` value to ensure that discovery for the storage system is complete.
4. Click **Rediscover** in the Host Services tab of the OnCommand console to rediscover the host service.
5. Verify that the physical servers are displayed in the Related Objects list in the Server tab.



## Could not find any storage mapping for virtual object

- Description** This message occurs in the following circumstances:
- When you create a new dataset in the OnCommand console that contains a datastore or a virtual machine from an NFS-based qtree
- Corrective action**
1. Refresh the monitor by opening a console session and type the following command:  
`dfm host discover -m share <storage system>`
  2. To view the results, type the following command:  
`dfm details <storage system>`  
If you created a dataset from an NFS-based qtree, then you must set the export permission for the qtree in the storage system.
  3. Search for the `shareTimestamp` value to ensure that discovery for the storage system is complete.
  4. Click **Rediscover** in the Host Services tab of the OnCommand console to rediscover the host service.
  5. Verify that the physical servers are displayed in the Related Objects list in the Server tab.

## Storage mapping fails for virtual machine and datastore created on VMFS datastore using FC LUN

- Issue** Host service does not display any storage mapping in the OnCommand console for virtual machine and datastore created on VMFS datastore using FC LUN.
- Cause** This problem occurs when you do not correctly unmap an FC LUN from the ESX host and there are non-accessible LUNs in the datastore that you created, the SCSI target might not get updated in the vCenter Server inventory.
- Corrective action** Remove the non-accessible LUN and rescan the storage adapter.

## Operation timed out

<b>Description</b>	This message occurs when an ESX or vCenter Server is busy creating snapshots or running local backups. In this instance, a copy operation for a restore might timeout from the vCenter server and the restore operation fails.
<b>Corrective action</b>	You can retry the restore operation when the ESX or vCenter Server is not as busy or you can use a different ESX or vCenter Server that is also connected to the same datastores.

## Primary key for table is not unique

<b>Description</b>	This message occurs if you move the virtual machine when adding the entire virtual machine folder to the vCenter Server inventory. This causes the new virtual machine to have the same universal unique identifier (UUID) as the virtual machine from which the virtual machine folder was copied, and a UUID conflict occurs causing the host service discovery to fail.
<b>Corrective action</b>	Delete the folder that was moved and then copy the virtual machine folder to the vCenter Server inventory.

## Access is denied

<b>Description</b>	This message occurs when you successfully install the Host Package, then attempt to modify the installation by setting new user credentials using the Add or Remove Programs tool in Windows server. This message might appear if the User Account Control (UAC) feature is enabled in Windows Server 2008 or Windows Server 2008 R2.
<b>Corrective action</b>	Set the UAC security level to low or you can change the Host Package settings by restarting the Host Package installer.

## Error 1067 while starting the DFM WebUI service

<b>Description</b>	This message occurs during the installation of the Core Package, when the server has Java installation (older, newer, or same version) that sets Java-specific environment variables. This results in the DFM WebUI service failing to start when the installation is complete.
--------------------	---

**Corrective action** You can uninstall the tool or application that sets the Java-specific environment variables or you can delete these variables when the DFM WebUI service fails to start after you install the Core Package. You can start the service manually by typing the `dfm service start webui/http` command.

## Verifying host service to DataFabric Manager server communication

**Issue** You can use the `dfm hs diag` command to verify that communication is enabled between the host service and the DataFabric Manager server, and to verify that the host service can communicate with the VMware plug-in. You can use this command to troubleshoot connectivity issues or to verify that communication is enabled before starting a host service backup.

**Corrective action**

1. On the DataFabric Manager server console, type the following command:  

```
dfm hs diag <host service>
```

## Administrators usergroup does not exist on <vFiler name>

**Description** This message occurs when you have a vFiler and you did not run the RBAC monitor for that vFiler, causing the vFiler configuration job for adding the vFiler credentials to the host service to fail.

**Corrective action**

1. Run the RBAC monitor for the vFiler using the command `dfm host discover -m rbac <vfiler Name>`.
2. Run the configuration job for the vFiler.

## Host service fails to connect to DataFabric Manager server after a restart

**Cause** If there not enough space on the disk, the Windows Event Log automatically stops the plug-in services.

**Corrective action** You must ensure there is enough space on the system drive and then restart the services that were stopped. The plug-in service has to be restarted before starting the host service.

## Host service is unresponsive after successful installation of OnCommand Unified Manager Host Package

- Issue** After you successfully install the Host Package, the host service does not display in the Host Services tab of the OnCommand console. You cannot configure a host service and no virtual objects are discovered.
- Cause** This problem occurs because of a limitation in XML, when the host name contains two hyphens in a row, causing the host service to become unresponsive. Additionally, another unusual sequence of characters might also cause this problem.
- Corrective action**
1. Stop the oncommandhostsvc service.
  2. You must modify the `hs_plugins.xml` file, which is located in the installation directory.  
The location of this file is at `C:\Program Files\IBM\OnCommand Host Package\Host Service` if you installed the Host Package in the default directory at `C:\Program Files\IBM\OnCommand Host Package`.
  3. You must remove the text from the commented out section that begins with `<PlugInEndpointInfo>` and ends with `</PlugInEndpointInfo>`.
  4. Restart the oncommandhostsvc service.

# Installing and configuring the Core Package in an MSCS environment

---

Microsoft Cluster Server (MSCS) provides high-availability (HA) protection for your Windows environment.

As part of the OnCommand Unified Manager Core Package installation process, the DataFabric Manager server and its associated services are installed on your system. The cluster resources, including the services for the DataFabric Manager server, the network name, the network address, and the shared data disks, are always online and available on one of the nodes. You must configure the network name and address, and the shared data disks, during the OnCommand Unified Manager Core Package installation process.

When any failure occurs, whether a node failure or a failure of one of the resources, all the resources are automatically moved, or failed over, to the partner node by MSCS.

This failover process is assisted by using a quorum resource on the cluster. The quorum resource is a physical storage device that can be accessed by both nodes in the cluster, although only one node has access to the quorum resource at any given time. The node that has access to the quorum resource is the node that has control of the cluster resource.

## Preparing to install the OnCommand Unified Manager Core Package in an MSCS environment

To ensure HA of the DataFabric Manager server, you must configure the services to be accessible through a network name and a network address. The DataFabric Manager server can also use this network name or network address; therefore, you do not have to add new network resources for the services.

An MSCS cluster that is configured with the DataFabric Manager server consists of two nodes, each node running the same version of the DataFabric Manager server.

All of the DataFabric Manager server data (database files, Performance Advisor files, and so on) is configured to be accessed from a shared data disk.

## Prerequisites for installing the OnCommand Unified Manager Core Package in MSCS

Before installing the Core Package in MSCS, you must set up two Windows servers running on identical hardware platforms. You must ensure that all the requirements and guidelines for configuring cluster servers are met, according to the MSCS documentation.

During the MSCS setup, you must ensure that you have completed the following actions:

- Creating a shared data disk to be used as a quorum resource.

- Creating a network name resource and a network address resource.
- Adding cluster resources to a resource group.

#### Related information

[Introducing Microsoft Cluster Service \(MSCS\)](#)

## Configuration requirements for the OnCommand Unified Manager Core Package in MSCS

You must meet specific configuration requirements when you set up your MSCS environment to use OnCommand Unified Manager Core Package.

To ensure OnCommand Unified Manager Core Package installs and functions properly in an MSCS environment, the following MSCS configuration conditions must exist:

- Microsoft Windows servers running Windows 2008 Enterprise Edition, or Data Center Edition have the same patch versions on identical hardware.

**Note:** MSCS is not supported on Windows Server 2008. However, you can configure DataFabric Manager 3.8 or later for HA on these platforms by using Failover Clustering. For more details, see the technical report on *High-Availability Support for DataFabric Manager server*. This technical report contains information about NetApp products that IBM licenses and sometimes customizes. Technical reports might contain information about models and features that are not supported by IBM.

- The DataFabric Manager server is connected to the storage system using either iSCSI or Fibre Channel (FC), and it is in a SAN environment.
- iSCSI-based storage is used for shared data disks with a IBM N series storage system as the storage back end.
- Members of the cluster are member servers, and not domain controllers.
- All DataFabric Manager server administrators are domain users, rather than local system users, so that the user login is successful even when the DataFabric Manager server services fail over to the partner node.
- 64-bit Perl in Windows 64-bit 2008 server is installed, to run DataFabric Manager server configuration scripts.

#### Related information

[Technical report 3767: High-Availability Support for DataFabric Manager server](#)

## Configuration limitations for the OnCommand Unified Manager Core Package in MSCS

OnCommand Unified Manager Core Package in MSCS is not supported on certain environmental conditions of the MSCS environment.

The following are configuration limitations of installing OnCommand Unified Manager Core Package in an MSCS environment:

- IPv6 virtual IP address on failover clustering is supported on Windows 2008 only.
- Quorum type “node and disk majority” in Failover Cluster is supported on Windows 2008 server only.
- OnCommand Unified Manager Core Package in MSCS is not supported on Windows running in a virtual machine.
- DataFabric Manager server does not support a host service created as a generic service from failover cluster manager in Microsoft Windows.

## Installing the OnCommand Unified Manager Core Package in an MSCS environment

Before installing the OnCommand Unified Manager Core Package, you must configure MSCS with a shared disk for a quorum resource, assign a network name and a network address, place the cluster resources in a cluster resource group.

After the installation is complete, you have to add DataFabric Manager server services to MSCS. You must install OnCommand Unified Manager Core Package on the first node, and repeat on the second node.

## Configuring MSCS for the OnCommand Unified Manager Core Package installation

Before you install OnCommand Unified Manager Core Package in MSCS, you must configure your MSCS environment.

### About this task

You must complete this task by using Cluster Administrator in the MSCS interface. See the MSCS documentation for more details.

You must configure MSCS to create the following:

- A shared quorum disk, which is used for storing the cluster configuration information
- A network name and a network address, which are used for managing the cluster server and the DataFabric Manager server
- A resource group to store the resources so that all these resources are available to both the cluster nodes

### Steps

1. Select a domain user and add the domain user to the **Administrators Group** on both the cluster nodes.

### Example

Enter the following command in **Administrators Group**:

```
domain\dfmuser
```

2. Create a shared data disk:
  - a) Make the disk accessible to both the cluster nodes.
  - b) Map the disk to a drive letter (such as drive S:).

**Note:** The data disk should be mapped to the same drive letter on both the cluster nodes.

- c) Add the shared data disk, as a physical disk resource, to the cluster server.

This disk is a resource for storing data specific to OnCommand Unified Manager Core Package.

3. Verify that the new resource group can successfully fail over to the partner node.

### Result

Cluster Administrator displays the resources, nodes, and groups. In addition to the content displayed after the initial setup, Cluster Administrator displays a physical disk resource named Disk S:.

### Related information

*[Introducing Microsoft Cluster Service \(MSCS\)](#)*

## Installing the OnCommand Unified Manager Core Package in MSCS

You can install the OnCommand Unified Manager Core Package in MSCS to ensure HA in a Windows environment. You must install the OnCommand Unified Manager Core Package on the first node, and repeat the installation procedure on the second node.

### Before you begin

The following conditions must be met:

- Microsoft Cluster Server is installed and configured on both the nodes of the cluster.
- The preinstallation tasks are completed.
- You must have the Core license key.
- The workstation meets the hardware requirements.
- You have Local Administrator login permission for the DataFabric Manager server.
- If you are upgrading from a previous version of the DataFabric Manager server, you should back up your database before the installation or during the installation process.
- The OnCommand Unified Manager Core Package installer from the N series support website (accessed and navigated as described in [Websites](#) on page 10) is downloaded.



### About this task

The two DataFabric Manager server nodes are configured to use the same database and to monitor the same set of nodes. Therefore, you can install the same license on both the nodes.

If you are upgrading from an earlier licensed version of DataFabric Manager server, you do not require a license key. Both the installation and upgrade processes automatically install the AutoSupport feature with AutoSupport enabled and display a message about how to disable the feature.

### Steps

1. Log in to the first node of the cluster pair as a domain user, with administrator privileges on the local system.
2. Open the **Cluster Administrator** interface and select **Owner** of the Resources folder, to ensure that the node owns the cluster resources.
3. Run the executable file.
4. Follow the setup prompts to complete the installation and note the installation directory path for later reference.
5. Stop the DataFabric Manager server services after the installation is complete by entering the following command:

```
dfm service stop
```

**Attention:** You should perform all cluster operations by using either Cluster Administrator or `cluster.exe`. Except where specifically indicated in installation and configuration procedures, you must not use the `dfm service start` and `dfm service stop` commands. These commands interfere with cluster operations.

6. Move the cluster resources to the second node by using the **Move Group** option in MSCS.
  7. Log in to the second node of the cluster pair as a domain user, with administrator privileges on the local system.
- Note:** You must log in with the same user name you used on the first node.
8. Install the Core Package on the second node at the same directory path that you used on the first node.
  9. Stop the DataFabric Manager server services on the second node by entering the following command:

```
dfm service stop
```

10. Disable the automatic start-up of the DataFabric Manager server by entering the following command on both the nodes:

```
dfm service enable -m
```

**After you finish**

You can start configuring both the cluster nodes by using the configuration scripts that are provided with the installation, or you can perform the configuration manually.

**Related concepts**

*OnCommand Unified Manager Core Package hardware and software requirements* on page 27

**Related tasks**

*Preparing to install the OnCommand Unified Manager Core Package in an MSCS environment* on page 101

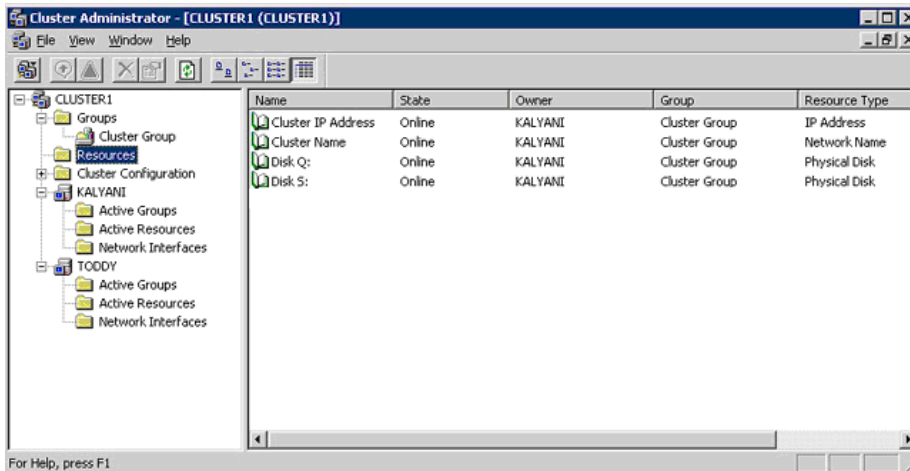
**Related information**

*IBM N series support website: [www.ibm.com/storage/support/nseries](http://www.ibm.com/storage/support/nseries)*

**Example of the MSCS initial setup**

You should understand how the cluster, the nodes, the physical disk, the network name, and the network IP address are displayed in the Cluster Administrator interface.

The following image is an example of the Cluster Administrator interface after the initial setup of MSCS:



The configuration displayed in this example is as follows:

- The cluster name is Cluster 1.
- The first node name is Kalyani.
- The second node name is Toddy.
- The physical disk, the shared disk quorum resource, is created with the name Disk Q: and is mapped to drive letter Q:.

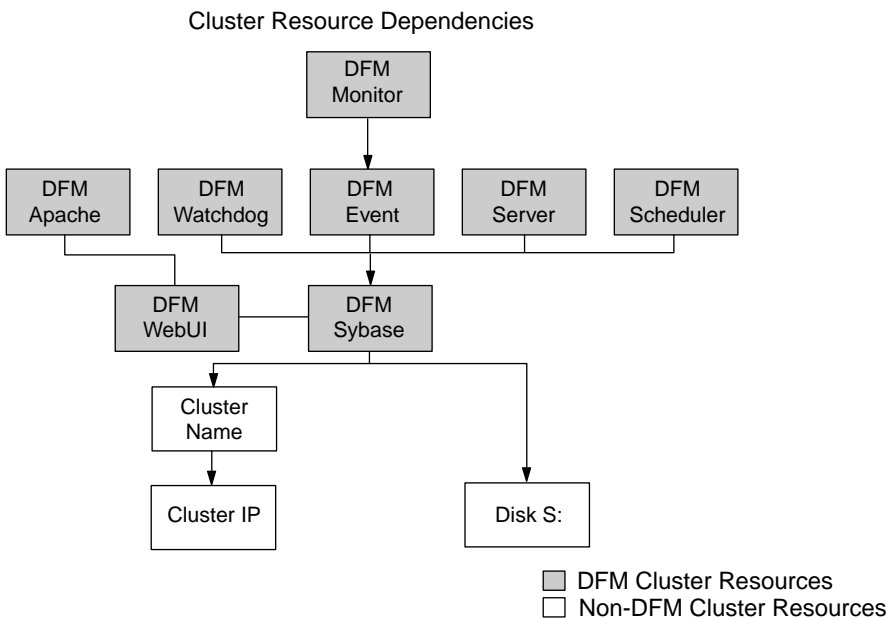
- The network name resource is called Cluster Name.
- The network IP Address resource is called Cluster IP Address.

## DataFabric Manager server service resources added to MSCS

You must add the DataFabric Manager server cluster service resources to MSCS. The services include DFM Monitor, DFM Apache, DFM Watchdog, DFM Event, DFM Server, DFM Scheduler, DFM WebUI, and DFM Sybase.

These services are used for various purposes, such as monitoring storage systems, scheduling jobs, serving HTTP requests and executing servlets, processing events and database queries, and monitoring all the other services.

The following illustration shows the services and the dependencies among the various resources:



## Configuring the OnCommand Unified Manager Core Package in an MSCS environment

When you install the OnCommand Unified Manager Core Package, the DataFabric Manager server services are installed with it. To achieve HA, you must add the DataFabric Manager server cluster services to MSCS. You can configure the services either by using scripts or by adding the services manually.

The following service resources are added to MSCS:

- DFM Monitor

- DFM Apache
- DFM Watchdog
- DFM Event
- DFM Server
- DFM Scheduler
- DFM WebUI
- DFM Sybase

## Adding the cluster services using a script

You can configure DataFabric Manager server in your cluster environment by running a configuration script.

### Steps

1. Log in to the node that owns cluster resources.
2. Move the DataFabric Manager server data to the shared data disk by entering the following command:

```
dfm datastore setup new_clusterdisk_directory
```

3. Stop the DataFabric Manager server services by entering the following command:

```
dfm service stop
```

This ensures that the DataFabric Manager server does not try to access the data disk to be moved to the secondary node.

4. Ensure that the DataFabric Manager server services do not start automatically by entering the following command:

```
dfm service enable -m
```

The `-m` option ensures that the DataFabric Manager server services do not start automatically.

5. Manually move the cluster group to the second node.
6. Verify that the secondary node owns the cluster resources.
7. Enter the following commands on the secondary node:

```
dfm service enable -m
```

```
dfm datastore setup -n drive_name
```

**Note:** You must ensure that you use the same drive letter for the secondary node as the first node. The `-n` option ensures that the data is not copied again to the shared data disk.

8. Access the directory at `C:\Program Files\IBM\DataFabric Manager\DFM\examples` or `/opt/IBMdfm/examples`.
9. Configure the DataFabric Manager server services in your cluster environment by running the following script:

```
dfmcluster_add_resources.pl -t cluster_type -g cluster_group -i
cluster_ip_resource -n cluster_nameresource
```

## Script options for configuring services in MSCS

You can use a configuration script to add the DataFabric Manager server generic service resources to MSCS.

The command to add services to the DataFabric Manager server is as follows:

```
perl dfmcluster_add_resources.pl option name ...
```

The perl dfmcluster\_add\_resources.pl command includes the following options:

- t cluster\_type** Cluster solution used for HA. The values are *mscs* (default) and *vcs*.
- g cluster\_group** Name of the cluster group to which the resources are added. This group already includes the other resources.
- i cluster\_ip\_resource** Name of the cluster IP resource that is displayed under the Name column in the Cluster Administrator.
- n cluster\_nameresource** Name of the cluster name resource.
- k data\_disk\_resource** Name of the data disk resource.

### Example

```
perl dfmcluster_add_resources.pl -g ClusterGroup1 -i 172.24.1.20 -n
Cluster1 -k Disk S:
```

## Bringing DataFabric Manager server cluster services online in MSCS

After you add the DataFabric Manager server services to MSCS, you must bring the services online.

### Steps

1. In the MSCS interface, select **Cluster Group** under the Groups folder.
2. Click **File**, and then click **Bring Online**.

## Configuring DataFabric Manager server to use the cluster name in MSCS

When DataFabric Manager server sends e-mail alert messages to administrators, the DataFabric Manager server uses the local system name in the URL, by default. These local system names are not accessible to users in the cluster. Therefore, you must configure DataFabric Manager server to use the cluster name instead.

### Step

1. Configure the DataFabric Manager server to use the cluster name by entering the following command:

```
dfm option set localHostName=fqdn-of-cluster
```

FQDN is the fully qualified domain name of the cluster.

## Configuring DataFabric Manager server in MSCS manually

You can manually configure DataFabric Manager server in MSCS, which allows you to customize the setup of the cluster. For example, you can move different DataFabric Manager server data files to different shared data disks. However, you cannot move the data files using the configuration scripts.

## Configuring DataFabric Manager server services on the first node in MSCS

You must configure the DataFabric Manager server by manually adding the DataFabric Manager server services.

### Before you begin

You must be logged in as a domain user, with administrative privileges on the local system, to access the shared data drive. By default, the DataFabric Manager server services run using the local system account, and therefore do not provide access to the shared drive where the database files and other files reside.

### Steps

1. In the **Cluster Administrator** interface, select the **Owner** field of the **Resources** folder.
2. Verify that the first node owns the resource group named Cluster Group.
3. Stop the DataFabric Manager server services by entering the following command:

```
dfm service stop
```

**Attention:** You should perform all cluster operations by using either Cluster Administrator or `cluster.exe`. Except where specifically indicated in installation and configuration procedures, you must not use the `dfm service start` and `dfm service stop` commands. These commands interfere with cluster operations.

4. Specify a user account in the **Logon As** field:
  - a) Open the **Services** page from Windows **Control Panel**.
  - b) Double-click **DFM Sybase ASA**.
  - c) In the **General** tab, change the **Startup type** option to **Manual**.
  - d) Click **Apply**.
5. Click the **Log On** tab.
6. Enter the name of the domain user account that you want to use to access the DataFabric Manager server service from the shared drive.
7. Click **OK**.
8. Repeat Steps 4 through 7 to add the cluster services.

You must add the following services in the **Administrative Tools**: DFM Monitor, DFM Apache, DFM Watchdog, DFM Event, DFM Server, DFM Scheduler, DFM WebUI

### After you finish

You must move the DataFabric Manager server data files to a shared disk.

## Moving DataFabric Manager server data files to a shared disk

You must configure the DataFabric Manager server to allow access to data files in a shared disk.

### Steps

1. For the first node, move the database files to a nonroot folder in the shared data drive.

The default location for database files is *installation\_directory\data*.

### Example

```
S:\dfm\data
```

2. Ensure that the DataFabric Manager server points to the relocated database by entering the following command:

```
dfm database set dbDir=S:\dfm\data
```

3. Verify that all the services are stopped by entering the following command:

```
dfm service list
```

4. Move the following data files to appropriate folders in the shared disk:

- Performance Advisor data files  
The default location is *installation\_directory\perfdata* (for example, *S:\dfm\perfdata*).
- Script plug-in files  
The default location is *installation\_directory\script-plugins* (for example, *S:\dfm\script-plugins*).
- Configuration Management plug-in files  
The default location is *installation\_directory\plugins* (for example, *S:\dfm\plugins*).
- Archived reports  
The default location is *installation\_directory\reports* (for example, *S:\dfm\reports*).

5. Start the SQL service by entering the following command:

```
dfm service start sql
```

6. Set the options to point to the new location of the relocated files by entering the following commands:

- a) `dfm option set perfArchiveDir=S:\dfm\perfdata`
- b) `dfm option set pluginsDir=S:\dfm\plugins`
- c) `dfm option set scriptDir=S:\dfm\script-plugins`
- d) `dfm option set reportsArchiveDir=S:\dfm\reports`

**Note:** The `dfm option set` command prompts you to start the services after setting each option. However, you must start the services only after you complete setting all the options.

7. Stop the SQL service by entering the following command:

```
dfm service stop sql
```

## Configuring DataFabric Manager server services on the second node in MSCS

After the first node is configured to allow access to all data files from a shared disk, you must configure the second node to allow the same access.

### Before you begin

You must be logged in as a domain user, with administrative privileges on the local system, to access the shared data drive. By default, the DataFabric Manager server services run using the local system account, and therefore do not provide access to the shared drive where the database files and other files reside.

### Steps

1. In the **Cluster Administrator** interface, select the **Owner** field of the **Resources** folder.
2. Verify that the first node owns the resource group named Cluster Group.
3. Stop the DataFabric Manager server services by entering the following command:

```
dfm service stop
```

**Attention:** You should perform all cluster operations by using either Cluster Administrator or `cluster.exe`. Except where specifically indicated in installation and configuration procedures, you must not use the `dfm service start` and `dfm service stop` commands. These commands interfere with cluster operations.

4. Specify a user account in the **Logon As** field:
  - a) Open the **Services** page from Windows **Control Panel**.
  - b) Double-click **DFM Sybase ASA**.
  - c) In the **General** tab, change the **Startup type** option to **Manual**.
  - d) Click **Apply**.
5. Click the **Log On** tab.
6. Enter the name of the domain user account that you want to use to access the DataFabric Manager server service from the shared drive.
7. Click **OK**.



**8.** Repeat Steps 3 through 6 to add the cluster services.

You must configure all the services for the cluster to start working. You must enter the following cluster service names in the **Services** tab in **Administrative Tools**:

- DFM Monitor
- DFM Apache
- DFM Watchdog
- DFM Event
- DFM Server
- DFM Scheduler
- DFM WebUI

**9.** Verify that all the services are stopped by entering the following command:

```
dfm service list
```

### Configuring DataFabric Manager server services as cluster resources in MSCS

After you install the DataFabric Manager server services, you have to configure them as cluster resources and make them available to both nodes.

#### Before you begin

- The dependencies that exist between the various cluster resources must be determined. A dependency requires that one service must be running before its associated service can be brought online. For example, most services cannot function unless Sybase ASA is already running.
- You must be logged in to the node as a domain user, with administrator privileges on the local system.

#### About this task

You can use the following table to add the resource name, dependencies, and service name when configuring each new cluster service:

Resource name field	Dependencies field	Service name field
DFM Sybase ASA	Cluster IP, Cluster Name, Shared Data Disk, Data Disk	DFMSybase
DFM Apache	DFM Sybase ASA, DFM WebUI	DFMApache
DFM Scheduler	DFM Sybase ASA	DFMScheduler
DFM Watchdog	DFM Sybase ASA	DFMWatchdog
DFM Server	DFM Sybase ASA	DFMServer
DFM Event	DFM Sybase ASA	DFMEvent

Resource name field	Dependencies field	Service name field
DFM Monitor	DFM Event	DFMMonitor
DFM WebUI	DFM Sybase ASA	DFMWebUI

### Steps

1. In the **Cluster Administrator** interface, select the **Owner** field of the Resources folder and verify that the node owns all the cluster resources.
2. In the console tree, double-click the **Groups** folder.
3. In the **Details** pane, click the group named **Cluster Group**.
4. Select **File** menu, and then select **New > Resource**.
5. On the **New Resource** page, complete the following steps:
  - a) Enter the resource name in the **Name** field.
  - b) Select **Generic Service** as the **Service Type**.
  - c) Select **Cluster Group** as the group.
  - d) Click **Next**.
6. On the **Possible Owners** page, complete the following steps:
  - a) Add both nodes as the possible owners of the resource.
  - b) Click **Next**.
7. On the **Dependencies** page, complete the following steps:
  - a) Add dependencies related to the new service in the **Dependencies** field.

### Example

Set **DFM Sybase ASA Dependencies** as the cluster IP address, cluster name, disk S:, and data disk.

- b) Click **Next**.
8. On the **Generic Service Parameters** page, complete the following steps:
  - a) Enter the name of the service in **Service Name**.

### Example

Set the name to DFM Sybase.

- b) Clear the **Use Network name for computer name** option.
9. On the **Registry Replication** page, click **Finish**.

**Note:** You do not have to perform registry replication.

10. Repeat Steps 5 through 9 for every DataFabric Manager server service.

**Related references**

[DataFabric Manager server service resources added to MSCS](#) on page 107

**Bringing DataFabric Manager server cluster services online in MSCS**

After you add the DataFabric Manager server services to MSCS, you must bring the services online.

**Steps**

1. In the MSCS interface, select **Cluster Group** under the Groups folder.
2. Click **File**, and then click **Bring Online**.

**Configuring a host service in MSCS**

When you add a new host service in a cluster environment, you must ensure that both nodes in a cluster pair have access to the keys folder. This ensures that when one node fails, the second node of the cluster pair starts functioning.

**Steps**

1. Copy the keys folder from one node to the other in the cluster pair at `installation_directory\conf`.
2. In the **Cluster Administrator** interface, select the cluster group and click **Move group**, or manually move the cluster group to the second node and verify that the second node owns the resources.
3. Enter the following command on the second node to start using the new setting:  
`dfm ssl service reload`
4. Launch the OnCommand console and verify that the host service status is Up in the **Host Services** tab.

**Managing DataFabric Manager server in an MSCS environment**

You can create and restore backups, set HTTPS options, and configure DataFabric Manager server to share data on the DataFabric Manager server cluster nodes.

**Best practices to start and stop DataFabric Manager server services in MSCS**

After you set up DataFabric Manager server in MSCS, do not use the `dfm service start` and `dfm service stop` commands, except where specifically indicated in installation and configuration procedures. These commands interfere with the working of MSCS.

You must start or stop all operations by using either the Cluster Administrator in MSCS or the `cluster.exe` command.

**Note:** Do not change the Service startup type to `Automatic` in the Service Control Manager on any of the nodes. You must ensure that this option is set to `Manual`.

## Restoring the DataFabric Manager server database in MSCS

Restoring a database enables the DataFabric Manager server to use the current settings. You can restore the database by using Cluster Administrator.

### Steps

1. Log in to the node that currently owns the cluster resources.
2. In **Cluster Administrator**, take the services offline by completing the following steps:
  - a) Right-click the **DFM Sybase** service.
  - b) Select **Take offline**.

The other services are also taken offline.

3. Restore the database by entering the following command in the OnCommand console:  
`dfm backup restore`
4. Stop all the services by entering the following command in the OnCommand console:  
`dfm service stop`
5. In **Cluster Administrator**, bring the DataFabric Manager server services online:
  - a) Select **Cluster Group** under the Groups folder.
  - b) Click **File**, and click **Bring Online**.

## Configuring DataFabric Manager server to use HTTPS in MSCS

You can configure DataFabric Manager server to use HTTPS on both the cluster nodes for secure data transfers.

### About this task

HTTPS is first set up with an SSL certificate, and then the HTTPS option is enabled on both the nodes.

### Steps

1. Log in to the first node in the cluster.
2. In **Cluster Administrator**, take the DataFabric Manager server services offline:
  - a) Right-click the **DFM Sybase** service.
  - b) Select **Take offline**.

The other services are also taken offline.

3. Start the SQL service by entering the following command in the OnCommand console:

```
dfm service start sql
```

4. Create an SSL certificate for HTTPS by entering the following command:

```
dfm ssl server setup
```

This creates two files, `server.crt` and `server.key`, in the `installation_directory\conf` folder.

5. Set the DataFabric Manager server option to enable HTTPS by entering the following command:

```
dfm option set httpsEnabled=yes
```

6. Start the HTTP service by entering the following command:

```
dfm service start http
```

Starting the service using `dfm service start` re-creates the `httpd.conf` file with the changed options.

**Attention:** You should perform all cluster operations by using either Cluster Administrator or `cluster.exe`. Except where specifically indicated in installation and configuration procedures, you must not use the `dfm service start` and `dfm service stop` commands. These commands interfere with cluster operations.

7. Ensure that the DataFabric Manager server services are offline.

If the services are not offline, the HTTP service is not enabled on the other node, because the configuration is not complete.

8. Stop all the services by entering the following command:

```
dfm service stop
```

9. In **Cluster Administrator**, move the cluster group to the second node by using the **Move Group** option.

10. Log in to the second node in the cluster.

11. Copy the `server.crt` and `server.key` files created on the first node to the `installation_directory\conf` folder in the second node.

12. Start the services and verify that they are operating as required by entering the following command:

```
dfm service start
```

Starting the service by using `dfm service start` re-creates the `httpd.conf` file with the changed options.

13. Stop the services by entering the following command:

```
dfm service stop
```

14. In **Cluster Administrator**, bring the DataFabric Manager server services online:

- a) Select **Cluster Group** under the Groups folder.
- b) Click **File**, and click **Bring Online**.

## Changing HTTP options in an MSCS environment

You can change the HTTP options to enable HTTPS, or change the default HTTP and HTTPS ports.

### Steps

1. Log in to the first node in the cluster.
2. In **Cluster Administrator**, take the DataFabric Manager server services offline:
  - a) Right-click the DFM Sybase service.
  - b) Select **Take offline**.

The other services are also taken offline.

3. Start the SQL service by entering the following command:

```
dfm service start sql
```

**Attention:** You should perform all cluster operations by using either Cluster Administrator or `cluster.exe`. Except where specifically indicated in installation and configuration procedures, do not use `dfm service start` and `dfm service stop`. These commands interfere with cluster operations.

4. Set the required HTTP option by entering the following command:

```
dfm option set option-name=option-value
```

### Example

```
dfm option set httpsPort=443
```

5. Start the HTTP service by entering the following command:

```
dfm service start http
```

Starting the service by using `dfm service start` re-creates the `httpd.conf` file with the changed options.

6. Stop all the services by entering the following command:

```
dfm service stop
```

**Note:** You must ensure that DataFabric Manager server services are offline before proceeding. Otherwise, HTTP is not enabled on the other node because the configuration is not complete.

7. In **Cluster Administrator**, move the cluster group to the second node by using the **Move Group** option.
8. Log in to the second node in the cluster.
9. Start the services by entering the following command:

```
dfm service start
```

10. Stop the services by entering the following command:

```
dfm service stop
```

11. In **Cluster Administrator**, bring the DataFabric Manager server services online:

- a) Select **Cluster Group** under the Groups folder.
- b) Click **File**, and click **Bring Online**.

## DataFabric Manager server monitoring in MSCS

Microsoft provides the Server Clusters Management Pack as part of Microsoft Operations Manager. You can monitor the cluster server, and report node status, resource status, and alerts by using Cluster Administrator in MSCS. DataFabric Manager server does not provide any additional cluster monitoring or alerting functionality.

## Data shared by MSCS cluster nodes

You must configure the DataFabric Manager server Microsoft Cluster Server (MSCS) nodes to access files from a shared disk. Using a shared disk ensures that any updates to these files are reflected in the files of the other nodes in the cluster after a failover.

The MSCS cluster nodes share the following files:

<i>installation_directory\data</i>	Sybase database files
<i>installation_directory\perfdata</i>	Performance Advisor data files
<i>installation_directory\scriptplugins</i>	Installed script plug-ins and related files
<i>installation_directory\plugins</i>	Storage system configuration plug-ins
<i>installation_directory\reports</i>	Archived reports
<i>installation_directory\dataExport</i>	DataFabric Manager server and Performance Advisor data
<i>installation_directory\jetty</i>	Libraries and Web application files
<i>installation_directory\conf\keys</i>	Encryption keys

## Data that is not shared by MSCS cluster nodes

Files such as executables, configuration files, and licenses are not shared by the MSCS cluster nodes. This ensures that the same version is maintained in the cluster nodes.

The following files are not shared:

<i>installation_directory\bin</i>	Executable files
<i>installation_directory\conf</i>	Configuration files
<i>installation_directory\docs</i>	Third-party licenses

<code>installation_directory\examples</code>	Cluster configuration scripts, and so on
<code>installation_directory\log</code>	Log files
<code>installation_directory\misc</code>	Configuration files
<code>installation_directory\sbin</code>	Third-party executables
<code>installation_directory\scripts</code>	Sybase_install.sql
<code>installation_directory\src</code>	Storage system configuration plug-ins
<code>installation_directory\web\clients</code>	Performance Advisor clients
<code>installation_directory\web\com</code>	JAR files for applets
<code>installation_directory\web\help</code>	Help files
<code>installation_directory\web\man</code>	Manual pages
<code>installation_directory\web\media</code>	Images used on Web interfaces
<code>installation_directory\web\scripts</code>	Java script files
<code>installation_directory\web\styles</code>	CSS style sheets
<code>installation_directory\perfExport</code>	Exported performance counter data for specified objects

## Uninstalling the OnCommand Unified Manager Core Package in an MSCS environment

You can uninstall the OnCommand Unified Manager Core Package from a cluster by deleting the cluster services from each cluster node.

### Steps

1. In **Cluster Administrator**, delete all the DataFabric Manager server services:
  - a) Right-click the **DFM Sybase** resource.
  - b) Select **Delete**.

The other DataFabric Manager server services are also deleted.
2. Log in to any one of the cluster nodes.
3. From the Windows Add or Remove Programs utility, uninstall the OnCommand Unified Manager Core Package.
4. Repeat Steps 2 through 3 for the other nodes.



## Upgrading OnCommand Unified Manager Core Package in an MSCS environment

You must ensure that all the nodes in the cluster are upgraded to the correct OnCommand Unified Manager Core Package version.

### Before you begin

- The OnCommand Unified Manager Core Package installer must be downloaded from the N series support website (accessed and navigated as described in [Websites](#) on page 10).
- A backup of your existing DataFabric Manager server database must be created.
- The database must be present at the following path: `INSTALL_DIR/DFM/data`. The database files `monitordb.db` and `monitordb.log` must be available on the shared disk.
- The DFM WebUI services must be added to the DataFabric Manager server.

### Steps

1. From **Cluster Administrator**, take the DataFabric Manager server services offline:

- a) Right-click the DFM Sybase service.
- b) Select **Take offline**.

The other services are also taken offline.

2. Select the **Owner** field of the **Resources** folder to ensure that the first node owns the resource group named Cluster Group.
3. Upgrade to the OnCommand Unified Manager Core Package installation on the first node:
  - a) Run the executable file.
  - b) Follow the setup prompts to complete the installation.

4. Stop all the DataFabric Manager server services by entering the following command:

```
dfm service stop
```

**Attention:** You should perform all cluster operations by using either Cluster Administrator or `cluster.exe`. Except where specifically indicated in installation and configuration procedures, you must not use the `dfm service start` and `dfm service stop` commands. These commands interfere with cluster operations.

5. Disable the automatic service start-up during reboot by entering the following command:

```
dfm service enable -m
```

6. In **Cluster Administrator**, move the cluster group to the second cluster node by selecting the group name in **Services and Applications**, and then click **Move this service or application to other node**.

7. Select the **Owner** field of the **Resources** folder to upgrade the second node.  
You must ensure that the second node owns all the cluster resources.
8. Perform a manual failover to the second node by entering the following commands on the second node:
 

```
hagrp -switch cluster_group -to node2
hastop -sys nodel -force
```
9. Stop all the DataFabric Manager server services by entering the following command:
 

```
dfm service stop
```
10. Optional: Move the DataFabric Manager server data to the shared data disk by entering the following command:
 

```
dfm datastore setup -n -d INSTALL_DIR/DFM/data
```

**Important:** You must perform this step if you are upgrading to OnCommand Unified Manager Core Package 5.1 or later from any version from DataFabric Manager server 3.8 through OnCommand Unified Manager Core Package 5.0.

**Note:** The `-n` option forces the server to use the database present at the specified path.
11. Point the Sybase database to use the new database by running the following command:
 

```
dfm datastore setup -n -d LUN_PATH
```
12. Check the status of the SQL service by running the following command:
 

```
dfm service list sql
```

If the service is not running, you must run the `dfm service start sql` command.
13. Upgrade to the OnCommand Unified Manager Core Package installation on the second node:
  - a) Run the executable file.
  - b) Follow the setup prompts to complete the installation.
14. Disable the automatic service start-up during reboot by entering the following command:
 

```
dfm service enable -m
```
15. In **Cluster Administrator**, click the console tree, and double-click the **Groups** folder.
16. In the **Details** pane, click the group named **Cluster Group**.
17. Select the **File** menu, and then select **New > Resource**.
18. On the **New Resource** page, complete the following steps:
  - a) In the **Name** field, enter the following name:
 

```
DFM WebUI
```
  - b) Select **Generic Service** as the **Service Type**.
  - c) Select **Cluster Group** as the group.

- d) Click **Next**.
19. On the **Possible Owners** page, add both the nodes as the possible resource owners, and click **Next**.
20. On the **Dependencies** page, add DFM Sybase ASA as a dependency on DFM WebUI, and click **Next**.
21. On the **DFM Apache Properties** page, set DFM WebUI to be dependent on DFM Apache.
22. On the **Generic Service Parameters** page, complete the following steps:
  - a) In the **Service Name** field, enter the following name:  
`DFM WebUI`
  - b) Clear the **Use Network name for computer name** option.
23. Bring the DataFabric Manager server services online:
  - a) Select **Cluster Group** under the **Groups** folder.
  - b) Click **File**, and click **Bring Online**.
24. Set the database path back to the upgraded database on the LUN by running the following command:  
`dfm datastore setup -n -d LUN_PATH`

### Related tasks

*[Configuring DataFabric Manager server on the cluster nodes in VCS](#) on page 130*

## Installing and configuring the Core Package in a VCS environment

---

Veritas Cluster Server (VCS) provides HA protection for cluster configurations.

As part of the OnCommand Unified Manager Core Package installation process, the DataFabric Manager server and its associated services are installed on your system. The cluster resources, including the services for the DataFabric Manager server, the network name, the network address, and the shared data disks, are always online and available on one of the nodes. You must configure the network name and address, and the shared data disks, during the OnCommand Unified Manager Core Package installation process.

When a resource node failure is detected, all the resources are automatically moved, or failed over, to the partner node by VCS.

## Preparing to install OnCommand Unified Manager Core Package in a VCS environment

To ensure HA of the DataFabric Manager server, you must configure the services to be accessible through a network name and a network address. The DataFabric Manager server can also use this network name or network address; therefore, you do not have to add new network resources for the services.

A VCS cluster configured with the DataFabric Manager server consists of two nodes, each node running the same version of the DataFabric Manager server. All of the DataFabric Manager server data (database files, Performance Advisor files, and so on) is configured to be accessed from a shared data disk.

## Prerequisites for installing OnCommand Unified Manager Core Package in VCS

Before installing OnCommand Unified Manager Core Package in Veritas Cluster Server (VCS), you must ensure that the VCS configuration requirements are met.

VCS must be installed according to the instructions provided in the *Veritas Cluster Server 5.0 Installation Guide*

### Related information

[Veritas Cluster Server](#)  
[Symantec Support](#)

## Configuration requirements for OnCommand Unified Manager Core Package in VCS

Before installing OnCommand Unified Manager Core Package in Veritas Cluster Server (VCS), you must ensure that the cluster nodes are properly configured to support the OnCommand Unified Manager software.

You must ensure that the VCS configuration meets the following requirements:

- Both of the cluster nodes must be running a supported operating system version.  
The minimum supported operating systems are Red Hat Enterprise Linux 5.6 and SUSE Linux Enterprise Server 10 with SP3.
- The same version of the OnCommand Unified Manager Core Package must be installed using the same path on both of the cluster nodes.
- Veritas File System and Volume Manager on Native ext3 File System and Logical Volume Manager (LVM) must be used.
- The DataFabric Manager server should be connected to the storage system using Fibre Channel (FC).  
Also ensure that the FC link is active and that the LUNs created on the storage systems are accessible to both of the cluster nodes.
- The shared data disk must have enough space to accommodate the DataFabric Manager server database, performance data, and script plug-in folders.
- A minimum of two network interfaces must be set up on each system: one for node-to-node communication and the other for node-to-client communication.  
The name of the network interface used for node-to-client communication should be the same on both the systems.
- A separate heartbeat link must be established between the cluster nodes; otherwise, the network interface is used to communicate between the cluster nodes.

## Configuration limitations for the OnCommand Unified Manager Core Package in VCS

You must be aware of the configuration limitations before you install the OnCommand Unified Manager Core Package in a VCS environment.

The following are configuration limitations in VCS:

- Only two-node clusters are supported.
- The OnCommand Unified Manager Core Package in VCS is not supported on VMware.
- For shared disks, the storage back-end must be an FC-based storage only.
- iSCSI storage is not supported for the OnCommand Unified Manager Core Package in VCS.

## Installing OnCommand Unified Manager Core Package in a VCS environment

You must install Veritas Storage Foundation first and then install OnCommand Unified Manager Core Package in VCS. After you install these on both the nodes, you must configure the DataFabric Manager server on the cluster node.

### Configuring VCS to install the OnCommand Unified Manager Core Package

Before you install the OnCommand Unified Manager Core Package in VCS, you must install SnapDrive, a Fibre Channel adapter, and Veritas Storage Foundation. You must then configure VCS and use SnapDrive for UNIX to create file systems.

#### Before you begin

- All requirements and guidelines for configuring cluster servers must be met, according to the VCS documentation.
- SnapDrive for UNIX must be installed.

#### Steps

1. Install Veritas Storage Foundation and HA Solutions 5.0 with Maintenance Pack 1 (MP 1).

When you install Veritas Storage Foundation and HA Solutions 5.0, VCS is also installed.

2. Configure VCS by entering the following command:

```
installvcs -configure
```

3. Enter the network address (virtual IP address).
4. Use SnapDrive for UNIX to create file systems and logical volumes.

#### Related information

*[Veritas Cluster Server](#)*

*[Veritas Storage Foundation](#)*

*[IBM N series support website: www.ibm.com/storage/support/nseries/](http://www.ibm.com/storage/support/nseries/)*

## Installing OnCommand Unified Manager Core Package on VCS

To ensure HA, you must install OnCommand Unified Manager Core Package on the two cluster nodes of VCS.

### Before you begin

- VCS must be installed and configured on both the nodes of the cluster.
- The same version of OnCommand Unified Manager Core Package must be installed on both the nodes.
- The installation directory is the same on both the nodes: for example, `/opt/IBMdfm`.
- The first node must own the cluster resources.
- You must have root privileges to log in to the DataFabric Manager server.
- The OnCommand Unified Manager Core Package installer must be downloaded from the N series support website (accessed and navigated as described in [Websites](#) on page 10)
- You must have set the environment variable on both nodes as `VCS_PATH: PATH=/opt/VRTSvcs/bin:$PATH`.

### About this task

During a new installation, you must specify the OnCommand Unified Manager Core license key. If you are upgrading from an earlier licensed version of DataFabric Manager server, you do not require a license key.

The two DataFabric Manager server nodes are configured to use the same database and to monitor the same set of nodes. Therefore, you can use the same license on both the nodes.

The installation and upgrade process automatically installs the AutoSupport feature with AutoSupport enabled and displays a message about how to disable the feature.

### Steps

1. Log in to the first node.
2. Run the executable file.
3. Follow the setup prompts to complete the installation.
4. Disable the automatic start-up of the DataFabric Manager server by entering the following command:

```
dfm service enable -m
```

**Attention:** You must perform all cluster operations using Cluster Manager. Other than in installation and configuration procedures, you must not use the `dfm service start` and `dfm service stop` commands. These commands interfere with cluster operations.

5. When the installation is complete, enter the following command to stop the DataFabric Manager server services:

```
dfm service stop
```

6. Log in to the second node.
7. Start the cluster service on the second node by entering the following command:

```
hastart
```

8. Perform a manual failover to the second node by entering the following command on the second node:

```
hagrp -switch cluster_group -to node2
```

```
hastop -sys node1 -force
```

9. Run the executable file on the second node.
10. Follow the setup prompts to complete the installation.
11. Restart the cluster service on the second by entering the following command:

```
hastart
```

12. Disable the automatic start-up of the DataFabric Manager server by entering the following command:

```
dfm service enable -m
```

13. Stop all services on the second node by entering the following command:

```
dfm service stop
```

### Related information

*IBM N series support website: [www.ibm.com/storage/support/nseries](http://www.ibm.com/storage/support/nseries)*

## Configuring OnCommand Unified Manager Core Package in a VCS environment

After installing OnCommand Unified Manager Core Package, you have to configure the DataFabric Manager server in VCS.

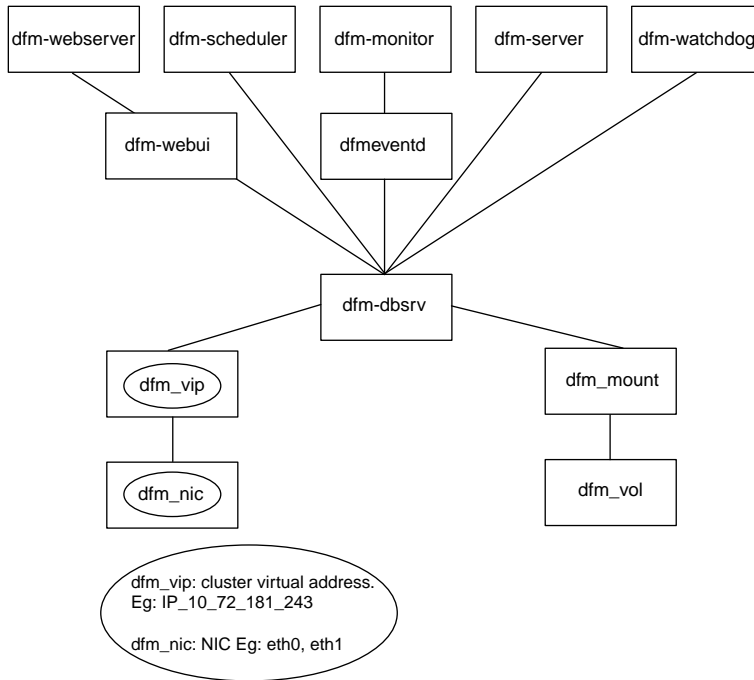
### DataFabric Manager server service resources added to VCS

You must add the DataFabric Manager server cluster service resources to VCS. There are dependencies among the various resources.

These services are used for various purposes, such as monitoring storage systems, scheduling jobs, processing events, and monitoring all the other services.

The following illustration shows the services and the dependencies among the various resources:





## Script options for configuring services in VCS

You have to configure the DataFabric Manager server to add its service resources to VCS. You can add the services manually, or by using the Perl configuration script.

The command to add services to the DataFabric Manager server is as follows:

```
perl dfmcluster_add_resources.pl -t cluster_type option ...
```

The perl `dfmcluster_add_resources.pl` includes the following options:

- |  |   |
|--|---|
| <b>-t <i>cluster_type</i></b>                | Cluster solution used for HA. The possible values are <code>vcs</code> (default value on UNIX) and <code>mcs</code> . |
| <b>-h <i>cluster_node1 cluster_node2</i></b> | Nodes used for cluster setup, separated by a space.   |
| <b>-g <i>cluster_group_name</i></b>          | Name of the cluster service group to which the resources are added.   |
| <b>-e <i>nic_resource_name</i></b>           | Name of the network interface card. This must be the same on both cluster nodes.                                      |
| <b>-i <i>cluster_ip_resource_name</i></b>    | Name of the cluster IP resource.  |
| <b>-n <i>cluster_name_resource_name</i></b>  | Host name of the cluster, which is mapped to the cluster virtual IP address.  |
| <b>-f <i>mount_point_resource_name</i></b>   | Name of the mount resource.   |

<b>-v</b> <i>volume_resource_name</i>	Name of the volume resource that contains the filesystem, represented by the mountpoint resource.
<b>-d</b> <i>disk_group_resource_name</i>	Name of the disk group that contains the volume, represented by the volume resource.
<b>-m</b> <i>netmask</i>	Netmask associated with the cluster IP address.
<b>-l</b> <i>installation_directory</i>	OnCommand Unified Manager Core Package installation directory. The default location is <code>/opt/IBMdfm</code> .

## Configuring DataFabric Manager server on the cluster nodes in VCS

You must configure the DataFabric Manager server on two nodes in a cluster to allow failover. You have to configure the DataFabric Manager server on the first node and then on the second node.

### Steps

1. Stop the cluster service of the second node by entering the following command on the first node:

```
hasstop -sys node2 -force
```

2. Move all the shared data, such as database files and performance data files, from the first node by entering the following command:

```
dfm datastore setup /mnt/vcsDisk1
```

*/mnt/vcsDisk1* is the mount point.

3. Stop all services on the first node by entering the following command:

```
dfm service stop
```

4. Add the cluster services as cluster resource by entering the following command on the first node:

```
perl dfmcluster_add_resources.pl -t vcs -h node1 node2 -g cluster_group  
-i cluster_ip_resource_name -n cluster_name_resource_name -d  
disk_group_resource_name -v volume_resource_name -f  
mount_point_resource_name -e nic_resource_name -m netmask
```

5. Verify the status of the cluster resources on the first node by entering the following commands:

```
hasys -list
```

```
hasstatus -summ
```

```
hagrp -state
```

```
hares -state
```

```
haclus -state
```

6. Start the cluster service on the second node by entering the following command:

```
hasstart
```

7. Perform a manual failover to the second node by entering the following command on the second node:

```
hagrp -switch cluster_group -to node2
```

```
hastop -sys node1 -force
```

**Note:** You can run the `snapdrive storage list -fs /mnt/vcsDisk1` command on the second node to verify the status of the mount point.

8. Configure the second node to use the shared data by entering the following command:

```
dfm datastore setup -n /mnt/vcsDisk1
```

Using the `-n` option while configuring the second node ensures that the DataFabric Manager server uses the data that was copied during the configuration of the first node.

9. Stop all services on the first node by entering the following command:

```
dfm service stop
```

10. Start the cluster services on the first node by entering the following command:

```
hastart
```

11. Verify the status of the cluster resources on both nodes by entering the following commands on the two nodes:

```
hasys -list
```

```
hastatus -summ
```

```
hagrp -state
```

```
hares -state
```

```
haclus -state
```

12. Start the services on the second node by entering the following command on the second node:

```
hagrp -online cluster_group -sys node2
```

## Configuring DataFabric Manager server in VCS manually

You can manually configure the DataFabric Manager server by using the VCS Application Configuration wizard. Configuring the DataFabric Manager server in VCS manually enables you to customize the cluster.

### Before you begin

You must have ensured that the DataFabric Manager server is installed at `/opt/IBMDfm`.

### Steps

1. Run the **VCS Application Configuration** wizard by entering the following command on the node where VCS is set up:

```
hawizard
```

2. Select **Create Application Service Group** and click **Next**.

3. Enter a name in **Service Group Name** and select the cluster from the **Available Cluster** list.
4. Click **Next**.
5. Enter the application details:
  - a) Specify `/usr/bin/dfm` as the path in **Start Program**.
  - b) Select **root** as user.
6. Click **Next**.
7. Select the processes that must be monitored by the DataFabric Manager server by entering the appropriate process monitor string.

The following table lists the processes and their process monitor string:

Process	Process monitor string
+ dfmmonitor	/opt/IBMdfm/sbin/dfmmonitor
+ dfmserver	/opt/IBMdfm/sbin/dfmserver
+ dfmscheduler	/opt/IBMdfm/sbin/dfmscheduler
+ dfmeventd	/opt/IBMdfm/sbin/dfmeventd
+ database server	/opt/IBMdfm/sbin/dbsrv11 @/opt/IBMdfm/conf/sybase.conf
+ Apache server	/opt/IBMdfm/sbin/httpd /opt/IBMdfm/conf/httpd.conf
+Webui	/opt/IBMdfm/java/bin/java /opt/IBMdfm/jetty/start.jar /opt/IBMdfm/conf/jetty.conf

8. Verify the process monitor string for each process by using the `ps -u root -o args` command.
9. Click **Next**.
10. Configure the mount resources and click **Next**.
11. Configure the IP and NIC resources and click **Next**.
12. Repeat Steps 5 through 11 for each DataFabric Manager server process.
13. Open **Cluster Manager** to configure the remaining cluster resources.
14. Select the service group **dfm\_sg** in the left pane.
15. In the **Resource** tab, right-click **Resource View**.
16. Enter the details for each **Resource Type**.

On Linux, you should select only **LVMLogicalVolume** and **Mount** as the resource types. The `FSType` attribute should be set to `ext3` for **Mount**.

17. Select **NIC** from the **Resource Type** list.
18. Right-click the added resources and select **Link**.
19. Create a dependency tree and bring all the services online.
20. Ensure the DataFabric Manager server uses the cluster name (instead of the local system name) by entering the following command:

```
dfm option set localHostName=fqdn-of-cluster
```

The DataFabric Manager server uses the name of the local system to send email alerts to administrators.

## Configuring a host services in VCS

When you add a new host service in VCS, you must ensure that both nodes in a cluster pair have access to the keys folder. This ensures that when one node fails, the second node of the cluster starts functioning.

### Steps

1. Copy the keys folder from one node to the other in the cluster pair at `installation_directory\conf`.
2. Open the **Cluster Manager** by entering the following command at the command prompt:  
`hagui`
3. In the **Cluster Manager**, right-click the **service group**, click **Switch To**, and select the second cluster node for failover
4. Enter the following command on the second node to start using the new setting:  
`dfm ssl service reload`
5. Launch the OnCommand console, verify that the host service status is Up in the **Host Services** tab.

## Best practices to start and stop DataFabric Manager server services in VCS

After you set up DataFabric Manager server in VCS, do not use the `dfm service start` and `dfm service stop` commands, except where specifically indicated in installation and configuration procedures. You must perform all operations by using the Cluster Manager.

- You should disable the DataFabric Manager server init scripts after installation on both the cluster nodes.
- You should not change the service start-up type to Automatic in Service Control Manager on any of the nodes.

The DataFabric Manager server reactivates these scripts during an upgrade and then disables them again when the upgrade is complete.

## Managing the DataFabric Manager server in a VCS environment

You can create and restore backups, set HTTPS options, and configure DataFabric Manager server to share data on the DataFabric Manager server cluster nodes.

### Restoring the DataFabric Manager server database in VCS

Restoring a database enables the DataFabric Manager server to use the current settings. You can restore the DataFabric Manager server database by disabling it through Cluster Manager and using the `dfm backup restore` command.

#### Steps

1. In **Cluster Manager**, disable the DataFabric Manager server services by right-clicking the name of the service group and then clicking **Offline**.
2. Select the first cluster node in which the services are online. N series Management Console
3. Ensure that one of the nodes owns the cluster resources (such as the mount point) by completing the following steps:
  - a) Select the service group **dfm\_sg**.
  - b) In the **Resources** tab, right-click **Resource View**.
  - c) Right-click the resource **Mount**, and then click **Online**
4. Restore the database by entering the command in the node that owns the Mount resource:  
`dfm backup restore`
5. In **Cluster Manager**, right-click the service group, click **Online**, and then select the first cluster node that is used for restore.

### Changing default port numbers for HTTP and HTTPS protocols

You can change the default port numbers for HTTP and HTTPS protocols.

#### Before you begin

The DFM Apache service must have been offline before the port numbers are changed in both the nodes.

#### Steps

1. Log in to the first node.
2. In **Cluster Administrator**, take the DataFabric Manager server services offline:
  - a) Right-click the **DFM Sybase** service.

b) Select **Take offline**.

All services go offline.

3. Start the SQL service by running the following command:

```
dfm service start sql
```

4. Set the new HTTP or HTTPS port numbers by running the following command:

```
dfm option set option_name=value
```

### Example

Set the new HTTP port:

```
dfm option set httpPort=8081
```

Set the new HTTPS port

```
dfm option set httpsPort=8089
```

5. Restart the HTTP or HTTPS service by running the following commands:

- The following commands restarts the HTTPS service:

```
dfm service stop webui
```

```
dfm service start webui
```

- The following commands restarts the HTTP service:

```
dfm service stop http
```

```
dfm service start http
```

6. Optional: Verify the changed port numbers by viewing the `httpd.conf` file.

7. Stop the HTTP and HTTPS services by running the following commands:

```
dfm service stop http
```

```
dfm service stop webui
```

8. In **Cluster Administrator**, move the cluster group to the second node by using the **Move Group** option.

9. Log in to the second node.

10. Start the HTTP and HTTPS services on the second node by entering the following commands:

```
dfm service start http
```

```
dfm service start webui
```

11. Optional: Verify the changed port numbers by viewing the `httpd.conf` file.

12. In **Cluster Administrator**, bring the DataFabric Manager server services online:

- a) Select **Cluster Group** under the **Groups** folder.
- b) Click **File**, and click **Bring Online**.

## Configuring the DataFabric Manager server to use HTTPS in VCS

You can configure the DataFabric Manager server to use HTTPS on both the cluster nodes for a secured data transfer.

### About this task

You must not take the `dfm-dbsrv` service offline.

### Steps

1. In **Cluster Manager**, take the DataFabric Manager server services offline:
  - a) Right-click the service group **dfm-sg**, and click **Offline**.
  - b) Select the first cluster node where the services are online.
  - c) In the **Resources** tab, right-click **Resource View**.
  - d) Right-click the resource **dfm-dbsrv** and click **Online**.
2. Create an SSL certificate by entering the following command:
 

```
dfm ssl server setup
```
3. Copy the files `server.crt` and `server.key` to the second node before starting the services on that node.
 

The files are located in the `installation_directory/conf` folder.
4. Enable HTTPS by setting the following DataFabric Manager server option to yes:
 

```
dfm option set httpsEnabled=yes
```
5. Start the HTTP service by entering the following command:
 

```
dfm service start http
```

This re-creates the `httpd.conf` file with the changed options.
6. Stop all the services by entering the following command:
 

```
dfm service stop
```

**Note:** You must ensure that DataFabric Manager server services are offline. Otherwise, the HTTP service fails to be enabled on the other node, because the configuration is not complete.
7. In **Cluster Manager**, move the cluster group to the second node by using the option **Switch To**.
8. Log in to the second node in the cluster.
9. Copy the files `server.crt` and `server.key` created on the first node to the folder `install-dir/conf`.
10. Start the services and verify that they are operating by entering the following command:
 

```
dfm service start
```



This creates the `httpd.conf` file with the changed options.

11. Stop the services by entering the following command:

```
dfm service stop
```

12. In **Cluster Manager**, reenale the DataFabric Manager server services.

## Changing the HTTP options in a VCS environment

You can change the HTTP options to enable HTTPS, or change the default HTTP and HTTPS port.

### About this task

You must not take the `dfm-dbsrv` service offline.

### Steps

1. In **Cluster Manager**, take the DataFabric Manager server services offline:
  - a) Right-click the service group, and click **Offline**.
  - b) Select the first cluster node where the services are online.
  - c) In the **Resources** tab, right-click **Resource View**.
  - d) Right-click the resource `dfm-dbsrv` and click **Online**.
2. Set the required HTTP option by entering the following command:

```
dfm option set option-name=option-value
```

### Example

```
dfm option set httpsPort=443
```

3. Restart the HTTP service by entering the following command:

```
dfm service start http
```

**Attention:** You must perform all cluster operations using Cluster Manager. Apart from installation and configuration procedures, you should not use the commands `dfm service start` and `dfm service stop`. These commands interfere with cluster operations.

4. Stop all the services by entering the following command:

```
dfm service stop
```

This re-creates the file `httpd.conf` with the changed options.

**Note:** You must ensure that DataFabric Manager server services are offline. Otherwise, the HTTP service fails to come up on the other node because the configuration is not complete.

5. In **Cluster Manager**, move the cluster group to the second node by using the option **Switch To**.
6. Log in to the second node in the cluster.
7. Start the services by entering the following command:

```
dfm service start
```

8. Stop the services by entering the following command:

```
dfm service stop
```

9. In **Cluster Manager**, bring the DataFabric Manager server services online.

## Data shared by VCS cluster nodes

You must configure DataFabric Manager server nodes to access files from a shared disk. If each node uses its own local copy of files, any updates to files might not be accessible to the other nodes, after a failover.

The VCS cluster nodes share the following files:

<i>installation_directory/data</i>	Sybase database files
<i>installation_directory/perfdata</i>	Performance Advisor data files
<i>installation_directory/scriptplugins</i>	Installed script plug-ins and related files
<i>installation_directory/plugins</i>	Storage system configuration plug-ins
<i>installation_directory/reports</i>	Archived reports
<i>installation_directory/dataExport</i>	DataFabric Manager server and Performance Advisor data
<i>installation_directory/jetty</i>	Libraries and Web application files

## Data that is not shared by VCS cluster nodes

To ensure that the same version is maintained in both the cluster nodes, executable and configuration files, license information, and so on are not shared by the DataFabric Manager server cluster nodes.

The VCS cluster nodes do not share the following files:

<i>installation_directory/bin</i>	Executable files
<i>installation_directory/conf</i>	Configuration files
<i>installation_directory/docs</i>	Third-party licenses
<i>installation_directory/examples</i>	Cluster configuration scripts, and other script files
<i>installation_directory/log</i>	Log files
<i>installation_directory/misc</i>	Configuration files
<i>installation_directory/sbin</i>	Third-party executables
<i>installation_directory/scripts</i>	Location of the <code>Sybase_install.sql</code> file
<i>installation_directory/src</i>	Storage system configuration plug-ins

<code>installation_directory/web/clients</code>	Performance Advisor clients
<code>installation_directory/web/com</code>	JAR files for applets
<code>installation_directory/web/help</code>	Help files
<code>installation_directory/web/man</code>	Manual (man) pages
<code>installation_directory/web/media</code>	Images used on Web interfaces
<code>installation_directory/web/scripts</code>	Java script files
<code>installation_directory/web/styles</code>	CSS style sheets

## Uninstalling the OnCommand Unified Manager Core Package in a VCS environment

You can uninstall the OnCommand Unified Manager Core Package from a cluster by deleting all the DataFabric Manager server services from the cluster nodes.

### Steps

1. In **Cluster Manager**, delete all the DataFabric Manager server services:
  - a) Right-click the service group **dfm-sg**.
  - b) Select **Delete**.
2. Log in to one of the cluster nodes.
3. Uninstall by entering the one of the following commands:
  - `rpm -e IBMdfm`
  - `rpm -erase IBMdfm`
4. Repeat Steps 2 through 3 for the other cluster nodes.

## Upgrading OnCommand Unified Manager Core Package in a VCS environment

When you upgrade the OnCommand Unified Manager Core Package cluster nodes, you must ensure that all the nodes in the cluster are upgraded.

### Before you begin

- The DataFabric Manager server installer from the N series support website (accessed and navigated as described in [Websites](#) on page 10) must be downloaded.
- A backup of your existing DataFabric Manager server database must be created.
- The database must be present at the following path: `INSTALL_DIR/DFM/data`.

The database files `monitordb.db` and `monitordb.log` must be available on the shared disk.

## Steps

1. From **Cluster Administrator**, take the DataFabric Manager server services offline by running the following commands on the first node:

```
hagrp -offline cluster_group -sys node1
hastatus -summ
```

2. Bring the cluster resources online on the first node by running the command:

```
hares -online data_mount -sys node1
```

3. Verify that the first node owns the cluster resources by running the command:

```
hastatus -summ
```

4. Optional: Update the monitoring process to point to the new database by running the following command:

```
hares -modify dfm-dbserver MonitorProcesses "install_dir/sbin/dbsrv11
@install_dir/conf/sybase.conf"
```

**Important:** You must perform this step if you are upgrading to OnCommand Unified Manager Core Package 5.1 or later from any version from DataFabric Manager server 3.8 through OnCommand Unified Manager Core Package 5.0.

5. Upgrade to OnCommand Unified Manager Core Package on the first node:

- a) Run the executable file.
- b) Follow the setup prompts to complete the installation.

6. Stop all the DataFabric Manager server services by entering the following command:

```
dfm service stop
```

**Attention:** You should perform all cluster operations by using either Cluster Administrator or `cluster.exe`. Except where specifically indicated in installation and configuration procedures, you must not use the `dfm service start` and `dfm service stop` commands. These commands interfere with cluster operations.

7. Disable the automatic service start-up during reboot by entering the following command:

```
dfm service enable -m
```

8. Perform a manual failover to the second node by entering the following commands on the second node:

```
hagrp -switch cluster_group -to node2
hastop -sys node1 -force
```

9. From **Cluster Administrator**, take the DataFabric Manager server services offline by running the following commands on the second node:

```
hagrp -offline cluster_group -sys node2
```

```
hastatus -summ
```

10. Bring the cluster resources online on the second node by running the command:

```
hares -online data_mount -sys node2
```

11. Optional: Point the Sybase database to the old database by running the following command:

```
dfm datastore setup -n -d old_monitordb_location
```

**Important:** You must perform this step if you are upgrading to OnCommand Unified Manager Core Package 5.1 or later from any version from DataFabric Manager server 3.8 through OnCommand Unified Manager Core Package 5.0.

12. Upgrade to the OnCommand Unified Manager Core Package installation on the second node:

- a) Run the executable file.
- b) Follow the setup prompts to complete the installation.

13. Set Sybase to the shared database location by running the following command:

```
dfm datastore setup -n -d shared_monitordb_location
```

14. Stop all the DataFabric Manager server services by entering the following command:

```
dfm service stop
```

15. Disable the automatic service start-up during reboot by entering the following command:

```
dfm service enable -m
```

16. From **Cluster Administrator**, bring the DataFabric Manager server services online by running the following command on the second node:

```
hagrp -online cluster_group -sys node2
```

## Related tasks

[Configuring DataFabric Manager server on the cluster nodes in VCS](#) on page 130

---

## Copyright and trademark information

Copyright ©1994 - 2013 NetApp, Inc. All rights reserved. Printed in the U.S.A.

Portions copyright © 2013 IBM Corporation. All rights reserved.

US Government Users Restricted Rights - Use, duplication or disclosure restricted by GSA ADP Schedule Contract with IBM Corp.

No part of this document covered by copyright may be reproduced in any form or by any means— graphic, electronic, or mechanical, including photocopying, recording, taping, or storage in an electronic retrieval system—without prior written permission of the copyright owner.

References in this documentation to IBM products, programs, or services do not imply that IBM intends to make these available in all countries in which IBM operates. Any reference to an IBM product, program, or service is not intended to state or imply that only IBM's product, program, or service may be used. Any functionally equivalent product, program, or service that does not infringe any of IBM's or NetApp's intellectual property rights may be used instead of the IBM or NetApp product, program, or service. Evaluation and verification of operation in conjunction with other products, except those expressly designated by IBM and NetApp, are the user's responsibility.

No part of this document covered by copyright may be reproduced in any form or by any means— graphic, electronic, or mechanical, including photocopying, recording, taping, or storage in an electronic retrieval system—without prior written permission of the copyright owner.

Software derived from copyrighted NetApp material is subject to the following license and disclaimer:

THIS SOFTWARE IS PROVIDED BY NETAPP "AS IS" AND WITHOUT ANY EXPRESS OR IMPLIED WARRANTIES, INCLUDING, BUT NOT LIMITED TO, THE IMPLIED WARRANTIES OF MERCHANTABILITY AND FITNESS FOR A PARTICULAR PURPOSE, WHICH ARE HEREBY DISCLAIMED. IN NO EVENT SHALL NETAPP BE LIABLE FOR ANY DIRECT, INDIRECT, INCIDENTAL, SPECIAL, EXEMPLARY, OR CONSEQUENTIAL DAMAGES (INCLUDING, BUT NOT LIMITED TO, PROCUREMENT OF SUBSTITUTE GOODS OR SERVICES; LOSS OF USE, DATA, OR PROFITS; OR BUSINESS INTERRUPTION) HOWEVER CAUSED AND ON ANY THEORY OF LIABILITY, WHETHER IN CONTRACT, STRICT LIABILITY, OR TORT

(INCLUDING NEGLIGENCE OR OTHERWISE) ARISING IN ANY WAY OUT OF THE USE OF THIS SOFTWARE, EVEN IF ADVISED OF THE POSSIBILITY OF SUCH DAMAGE.

NetApp reserves the right to change any products described herein at any time, and without notice. NetApp assumes no responsibility or liability arising from the use of products described herein, except as expressly agreed to in writing by NetApp. The use or purchase of this product does not convey a license under any patent rights, trademark rights, or any other intellectual property rights of NetApp.

The product described in this manual may be protected by one or more U.S.A. patents, foreign patents, or pending applications.

RESTRICTED RIGHTS LEGEND: Use, duplication, or disclosure by the government is subject to restrictions as set forth in subparagraph (c)(1)(ii) of the Rights in Technical Data and Computer Software clause at DFARS 252.277-7103 (October 1988) and FAR 52-227-19 (June 1987).

---

## Trademark information

IBM, the IBM logo, and [ibm.com](http://www.ibm.com) are trademarks or registered trademarks of International Business Machines Corporation in the United States, other countries, or both. A complete and current list of other IBM trademarks is available on the Web at <http://www.ibm.com/legal/copytrade.shtml>

Linux is a registered trademark of Linus Torvalds in the United States, other countries, or both.

Microsoft, Windows, Windows NT, and the Windows logo are trademarks of Microsoft Corporation in the United States, other countries, or both.

UNIX is a registered trademark of The Open Group in the United States and other countries.

NetApp, the NetApp logo, Network Appliance, the Network Appliance logo, Akorri, ApplianceWatch, ASUP, AutoSupport, BalancePoint, BalancePoint Predictor, Bycast, Campaign Express, ComplianceClock, Cryptainer, CryptoShred, Data ONTAP, DataFabric, DataFort, Decru, Decru DataFort, DenseStak, Engenio, Engenio logo, E-Stack, FAServer, FastStak, FilerView, FlexCache, FlexClone, FlexPod, FlexScale, FlexShare, FlexSuite, FlexVol, FPolicy, GetSuccessful, gFiler, Go further, faster, Imagine Virtually Anything, Lifetime Key Management, LockVault, Manage ONTAP, MetroCluster, MultiStore, NearStore, NetCache, NOW (NetApp on the Web), Onaro, OnCommand, ONTAPI, OpenKey, PerformanceStak, RAID-DP, ReplicatorX, SANscreen, SANshare, SANtricity, SecureAdmin, SecureShare, Select, Service

Builder, Shadow Tape, Simplicity, Simulate ONTAP, SnapCopy, SnapDirector, SnapDrive, SnapFilter, SnapLock, SnapManager, SnapMigrator, SnapMirror, SnapMover, SnapProtect, SnapRestore, Snapshot, SnapSuite, SnapValidator, SnapVault, StorageGRID, StoreVault, the StoreVault logo, SyncMirror, Tech OnTap, The evolution of storage, Topio, vFiler, VFM, Virtual File Manager, VPolicy, WAFL, Web Filer, and XBB are trademarks or registered trademarks of NetApp, Inc. in the United States, other countries, or both.

All other brands or products are trademarks or registered trademarks of their respective holders and should be treated as such.

NetApp, Inc. is a licensee of the CompactFlash and CF Logo trademarks.

NetApp, Inc. NetCache is certified RealSystem compatible.

---

## Notices

This information was developed for products and services offered in the U.S.A.

IBM may not offer the products, services, or features discussed in this document in other countries. Consult your local IBM representative for information on the products and services currently available in your area. Any reference to an IBM product, program, or service is not intended to state or imply that only that IBM product, program, or service may be used. Any functionally equivalent product, program, or service that does not infringe on any IBM intellectual property right may be used instead. However, it is the user's responsibility to evaluate and verify the operation of any non-IBM product, program, or service.

IBM may have patents or pending patent applications covering subject matter described in this document. The furnishing of this document does not give you any license to these patents. You can send license inquiries, in writing to:

IBM Director of Licensing  
IBM Corporation  
North Castle Drive  
Armonk, N.Y. 10504-1785  
U.S.A.

For additional information, visit the web at:  
<http://www.ibm.com/ibm/licensing/contact/>

The following paragraph does not apply to the United Kingdom or any other country where such provisions are inconsistent with local law:



**INTERNATIONAL BUSINESS MACHINES CORPORATION PROVIDES THIS PUBLICATION “AS IS” WITHOUT WARRANTY OF ANY KIND, EITHER EXPRESS OR IMPLIED, INCLUDING, BUT NOT LIMITED TO, THE IMPLIED WARRANTIES OF NON-INFRINGEMENT, MERCHANTABILITY OR FITNESS FOR A PARTICULAR PURPOSE.** Some states do not allow disclaimer of express or implied warranties in certain transactions, therefore, this statement may not apply to you.

This information could include technical inaccuracies or typographical errors. Changes are periodically made to the information herein; these changes will be incorporated in new editions of the publication. IBM may make improvements and/or changes in the product(s) and/or the program(s) described in this publication at any time without notice.

Any references in this information to non-IBM web sites are provided for convenience only and do not in any manner serve as an endorsement of those web sites. The materials at those web sites are not part of the materials for this IBM product and use of those web sites is at your own risk.

IBM may use or distribute any of the information you supply in any way it believes appropriate without incurring any obligation to you.

Any performance data contained herein was determined in a controlled environment. Therefore, the results obtained in other operating environments may vary significantly. Some measurements may have been made on development-level systems and there is no guarantee that these measurements will be the same on generally available systems. Furthermore, some measurement may have been estimated through extrapolation. Actual results may vary. Users of this document should verify the applicable data for their specific environment.

Information concerning non-IBM products was obtained from the suppliers of those products, their published announcements or other publicly available sources. IBM has not tested those products and cannot confirm the accuracy of performance, compatibility or any other claims related to non-IBM products. Questions on the capabilities of non-IBM products should be addressed to the suppliers of those products.

If you are viewing this information in softcopy, the photographs and color illustrations may not appear.

# Index

7-Mode management  
upgrading for [84](#)

## A

Adobe Flash Player  
version required [27](#)

associating storage systems [66](#)

authentication

certificate-based [71](#)

certificate-based, disabling [74](#)

certificate-based, generating a key and certificate [72](#)

## B

best practices

for stopping and starting the services [115](#)

browser requirements

Firefox [24](#)

Internet Explorer [24](#)

OnCommand [24](#)

## C

certificate details

displaying DataFabric Manager server [74](#)

certificates

about SSL [71](#)

authentication using [71](#)

displaying contents of key [73](#)

displaying details from truststore [73](#)

displaying list in a truststore [72](#)

installing in the truststore [72](#)

management of cloud service client [71](#)

management of host services client [75](#)

migrating manually [75](#)

removing from the truststore [72](#)

changing user credentials [98](#)

checklist

configuration [13](#)

installation [13](#)

cloud service client

certificate management [71](#)

cluster services

adding using a script [108](#)

clustered Data ONTAP management

upgrading for [84](#)

cmdlets

installing [47](#)

configuration

checklist [13](#)

DataFabric Manager server in VCS, scripts for [129](#)

Express edition server [55](#)

Standard edition server [59](#)

configuring

DataFabric Manager server in MSCS [109](#)

DataFabric Manager server manually in VCS [131](#)

MSCS environment [103](#)

VCS nodes [130](#)

connection issues [95](#)

Core Package

capabilities [13](#)

changes that affect upgrade to [79](#)

installing on Linux [40](#)

installing on Windows [38](#)

upgrading on Linux [82](#)

upgrading on Windows [81](#)

*See also* OnCommand Core Package

*See also* OnCommand Core Package

core package cmdlets

installing [47](#)

credentials

storage systems [68](#)

cursor displays in multiple locations [95](#)

## D

dashboard panel, cursor displays in multiple locations [95](#)

data protection

license requirements [26](#)

data shared by cluster nodes [119](#)

database files

requirements for network storage [27](#)

DataFabric Manager Host Agent

versions supported [28](#)

DataFabric Manager server

adding cluster services using scripts [108](#)

Express edition functionality [21](#)

Standard edition functionality [21](#)

verifying host service registration [60](#)

with Express and Standard editions [20](#)

DataFabric Manager server certificate displaying details [74](#)

DataFabric Manager server in MSCS  
 bringing services online [109, 115](#)  
 cluster service resources [107](#)  
 configuring [109](#)  
 configuring cluster services [113](#)  
 configuring HTTP and HTTPS  
   changing default HTTP and HTTPS ports [118](#)  
 configuring HTTPS [116](#)  
 configuring the first node [110](#)  
 configuring the second node [112](#)  
 data shared by cluster nodes [119](#)  
 guidelines to start and stop services [115](#)  
 monitoring [119](#)  
 moving data files [111](#)  
 restoring the database [116](#)  
 unshared data by cluster nodes [119](#)

DataFabric Manager server in VCS  
 cluster service resources [128](#)  
 configuration scripts [129](#)  
 configuring HTTP and HTTPS [137](#)  
 configuring HTTPS [136](#)  
 configuring manually [131](#)  
 guidelines to start and stop services [133](#)  
 restore the database [134](#)  
 shared data by cluster nodes [138](#)  
 unshared data by cluster nodes [138](#)

DataFabric Manager truststore [71](#)  
*See also* truststore

deletion of certificates from the truststore [72](#)

designated ports  
   OnCommand Host Package [35](#)

disabling  
   certificate-based authentication [74](#)

disk space requirements [33](#)

duplicate UUID [98](#)

## E

enabling  
   secure communication between the DataFabric Manager server and storage system [77](#)

error messages  
   Access is denied [98](#)  
   Address already in use [95](#)  
   Could not find any storage mapping for application object [97](#)  
   Operation timed out [98](#)  
   Primary key for table is not unique [98](#)

  There is a problem with this Windows Installer package [95](#)

ESX timeout [98](#)

Express edition  
   description [20](#)

Express edition server  
   configuring [55](#)

## F

Firefox  
   browser requirements [24](#)

## H

hardware requirements  
   Linux workstation or server [30, 31](#)  
   OnCommand Host Package [33](#)  
   Windows Server 2008 [28, 29](#)

Host Package  
   capabilities [13](#)  
   *See also* OnCommand Host Package

host service fails to connect to DataFabric Manager server [99](#)

host service is unresponsive [100](#)

host service port  
   setting manually [88](#)

host services  
   adding [64](#)  
   associating with vCenter Server [62](#)  
   authorizing access to storage [61](#)  
   communication with plug-ins [65](#)  
   configuring in MSCS [115](#)  
   configuring in VCS [133](#)  
   overview [16](#)  
   registering [64](#)  
   registering with vCenter Server [62](#)  
   verifying communication with DataFabric Manager server [99](#)  
   verifying server registration [60](#)

host services client  
   certificate management [75](#)

hotfixes  
   .NET Framework  
     Net.TCP Port Sharing Service  
       Windows PowerShell  
         Windows Installer Visual C++ [34](#)  
   required before installing Host Package [34](#)

HTTP  
   setting port number for [134](#)

**HTTPS**

- enabling between the DataFabric Manager server and storage system [77](#)
- setting port number for [134](#)

**I**

## installation

- clustered environment [37](#)
- core package cmdlets [47](#)
- of OnCommand Host Package [48](#)
- prerequisites for [27](#)
- scenarios for [14](#)

installation checklist [13](#)installation of OnCommand Core Package [36](#)

## installation overview

- 7-Mode operating environment [36](#)

## installation script

- options, on Linux [44](#)
- options, on Windows [43](#)

## installing

- Core Package in VCS [127](#)
- Core Package on Linux [40](#)
- Core Package on Windows [38](#)
- OnCommand Host Package [49](#)

## Internet Explorer

- browser requirements [24](#)

**K**

## keys

- displaying contents [73](#)
- migrating manually [75](#)

## keys and certificates

- generating [72](#)

## keys folder

- sharing between nodes in a cluster [115](#), [133](#)

**L**

## licenses

- for data protection, BCO [26](#)
- requirements [26](#)

## Linux workstation or server

- hardware requirements [30](#), [31](#)
- operating system requirements [30](#), [31](#)

login credentials [68](#)**M**

## Management Console

- installing [46](#)

## manual migration

- DataFabric Manager server certificates [75](#)

## manual upgrade

- cmdlets [47](#)

memory requirements [33](#)Microsoft Cluster Server (MSCS) [101](#)

## mixed-mode environments

- upgrading to manage [84](#)

## MSCS

- changing HTTP options [118](#)

- cluster service resources [107](#)

- configuration requirements for Core Package in [102](#)

- configuring DataFabric Manager server for HTTPS [116](#)

- configuring DataFabric Manager server services as cluster resources in [113](#)

- configuring DataFabric Manager server services on the first node [110](#)

- configuring DataFabric Manager server services on the second node [112](#)

- guidelines to start and stop the services [115](#)

- initial setup example [106](#)

- installing the Core Package in [104](#)

- moving data files to a shared disk [111](#)

- preparing to install the Core Package [101](#)

- restoring the DataFabric Manager server database [116](#)

- uninstalling OnCommand Core Package [120](#)

- upgrading OnCommand Core Package [121](#)

MSCS (Microsoft Cluster Server) [101](#)

## MSCS environment

- configuring [103](#)

- configuring a host service in [115](#)

**N**

## N series Management Console

- functionality [18](#)

NDMP credentials [68](#)**O**

## OnCommand

- architecture [15](#)

- Express edition [20](#)

- Express edition server configuration [55](#)

- Standard edition [20](#)
  - Standard edition configuration [59](#)
  - troubleshooting [95](#)
  - OnCommand console [18](#)
  - OnCommand Core Package
    - changes that affect upgrade to [79](#)
    - configuring [55](#)
    - contents [17](#)
    - downloading software [37](#)
    - environment scenarios [14](#)
    - functionality [18](#)
    - hardware and software requirements [27](#)
    - installed components [17](#)
    - installing [36](#)
    - installing on Linux [40](#)
    - installing on Windows [38](#)
    - installing with a script [42](#)
    - options for install script on Linux [44](#)
    - options for installation script on Windows [43](#)
    - required ports [31](#)
    - required software [27](#)
    - storage environment and installation [14](#)
    - unattended install [42](#)
    - uninstalling [92](#)
    - uninstalling from Linux [93](#)
    - uninstalling from Windows [92](#)
    - upgrading [79](#)
    - upgrading on Linux [82](#)
    - upgrading on Windows [81](#)
  - OnCommand Core Package in MSCS
    - configuration [107](#)
    - configuration limitations [103](#)
    - configuration requirements [102](#)
    - installation [103](#)
    - installation prerequisites [101](#)
    - installing [104](#)
    - preparing to install [101](#)
    - supported configurations [102](#)
    - uninstalling [120](#)
    - upgrading [121](#)
  - OnCommand Core Package in VCS
    - configuration limitations [125](#)
    - configuring [128](#)
    - installation of [126](#)
    - installation prerequisites [124](#)
    - installing [127](#)
    - preparing to install [124](#)
    - supported configurations [125](#)
    - uninstalling [139](#)
    - upgrading [139](#)
  - OnCommand Host Package
    - configuring [55](#)
    - contents [19](#)
    - designated ports [35](#)
    - downloading software [48](#)
    - functionality in a VMware environment [20](#)
    - hardware and software requirements [33](#)
    - hardware requirements [33](#)
    - installation [48](#)
    - installation prerequisites [48](#)
    - installed components [19](#)
    - installing [49](#)
    - installing with a script [52](#)
    - managing virtual environments [20](#)
    - operating system requirements [33](#)
    - prerequisites for upgrading [85](#)
    - required software [34](#)
    - scripted install options for VMware [53](#)
    - unattended install process [52](#)
    - uninstalling [92](#)
    - uninstalling in a VMware environment [93](#)
    - upgrading [79](#)
    - upgrading in a VMware environment [86](#)
  - OnCommand Unified Manager
    - browser requirements [24](#)
    - components overview [13](#)
    - Data ONTAP support [13](#)
    - license requirements [26](#)
  - Open System SnapVault
    - versions supported [28](#)
  - operating system requirements
    - Linux workstation or server [30](#)
  - Operations Manager console [18](#)
  - options
    - for the installation script, Linux [44](#)
    - for the installation script, Windows [43](#)
  - outbound ports, insufficient [95](#)
- ## P
- physical storage objects
    - managing on primary storage [18](#)
    - managing on secondary storage [18](#)
  - plug-in container for Firefox stops working [96](#)
  - plug-ins
    - communication with host service [65](#)
  - ports
    - required for OnCommand Core Package [31](#)
    - setting for HTTP and HTTPS [134](#)
    - setting the number manually [88](#)

ports, insufficient outbound [95](#)

PowerShell Cmdlets

functionality [18](#)

processor requirements [33](#)

## R

Related Objects list

no physical servers displayed [96](#)

requirements

for configuring the Core Package in MSCS [102](#)

for data protection, license [26](#)

for database files, network storage [27](#)

for installing Host Package [48](#)

for Linux workstation or server [30](#)

for upgrading the Host Package [85](#)

for Windows Server 2008 [28](#), [29](#)

hardware [33](#)

licenses [26](#)

Linux workstation or server [31](#)

system [24](#)

restore fails [98](#)

## S

scripts

options to use for installation [53](#)

secure communication

enabling between the DataFabric Manager server  
and storage system [77](#)

shared lock directory

creating [51](#)

with Virtual Storage Console [51](#)

SNMPv3

enabling between the DataFabric Manager server  
and storage system [77](#)

software requirements [27](#)

Standard edition

description [20](#)

Standard edition server

configuring [59](#)

storage mapping error [96](#), [97](#)

storage systems

associating with a host service [66](#)

authorizing host service access [61](#)

determining domain or workgroup [70](#)

login credentials [68](#)

NDMP credentials [68](#)

system requirements [24](#)

## T

temporary disk space requirements [33](#)

trust store

*See* truststore

truststore

contents of [71](#)

displaying certificate details from [73](#)

displaying certificates [72](#)

installing certificates [72](#)

migrating manually [75](#)

removing certificates [72](#)

## U

uninstallation

OnCommand Core Package from Windows [92](#)

upgrade

changes that affect [79](#)

upgrade issues

upgrading to 3.8 or earlier [88](#)

upgrading

32-bit server to 64-bit server [83](#)

Core Package

in Linux [83](#)

in Windows [83](#)

Core Package, on Linux [82](#)

Core Package, on Windows [81](#)

OnCommand Core Package in MSCS [121](#)

OnCommand Core Package in VCS [139](#)

OnCommand Host Package [86](#)

using FC LUN

no physical servers displayed [97](#)

## V

vCenter Server

associating a host service [62](#)

registering a host service [62](#)

vCenter Server timeout [98](#)

VCS

adding cluster service to nodes in [130](#)

configuring DataFabric Manager server manually  
[131](#)

configuring the Core Package in [128](#)

installing the Core Package in [127](#)

preparing to install the Core Package [124](#)

restore the DataFabric Manager server database [134](#)

uninstalling OnCommand Core Package [139](#)

upgrading OnCommand Core Package [139](#)

- VCS (Veritas Cluster Server) [124](#)
- VCS environment
  - configuring [126](#)
  - configuring a host service in [133](#)
- Veritas Cluster Server
  - installing OnCommand Core Package in [124](#)
- Veritas Cluster Server (VCS) [124](#)
- Virtual Storage Console

- shared lock directories [51](#)

## W

- Windows Installer service error [95](#)
- Windows Server 2008
  - hardware requirements [28](#), [29](#)
  - operating system requirements [28](#), [29](#)







NA 210-06256\_A0, Printed in USA

GA32-1020-03

